

# Creating and Cutting a Contour Outline

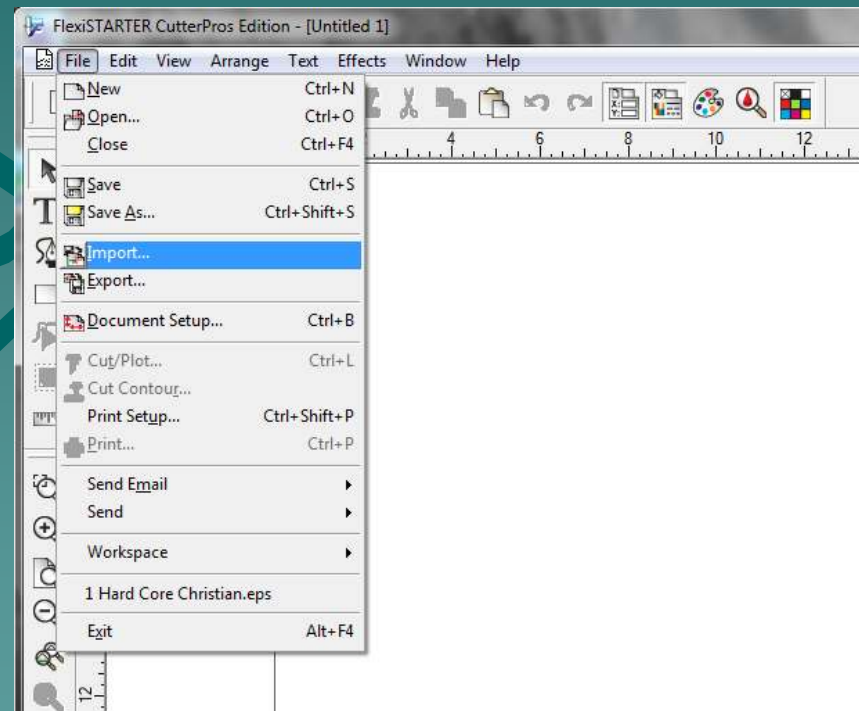
For use with Flexi Starter  
CutterPros Custom Edition

# Proper Images

- ◆ In order for image outlines to work, the image must be in a *vectorized format*.
- ◆ JPG, BMP and other pixel based image formats cannot be outlined until they are *vectorized*.
- ◆ Further instructions for *vectorizing* are available on our support page at <http://www.cutterpros.com/downloads>
- ◆ This tutorial was written using Flexi Starter 10 – CutterPros Custom Edition Software.
- ◆ Flexi Starter does not vectorize images, however a free vector based program called Inkscape will.
- ◆ For more information on Inkscape or to update your current version, go to <http://www.inkscape.org>

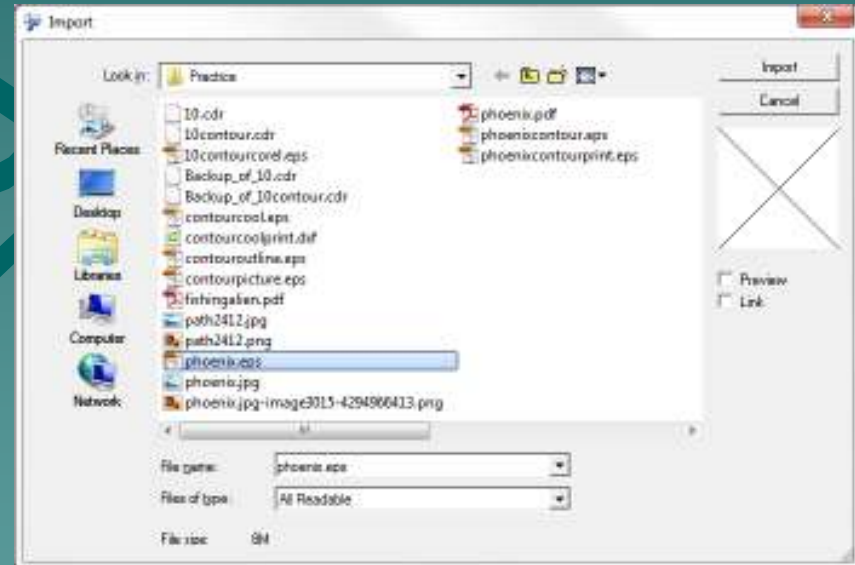
# 1-1 Creating the Contour

- ◆ To load the image into Flexi, go to the File menu, and click 'Import'.



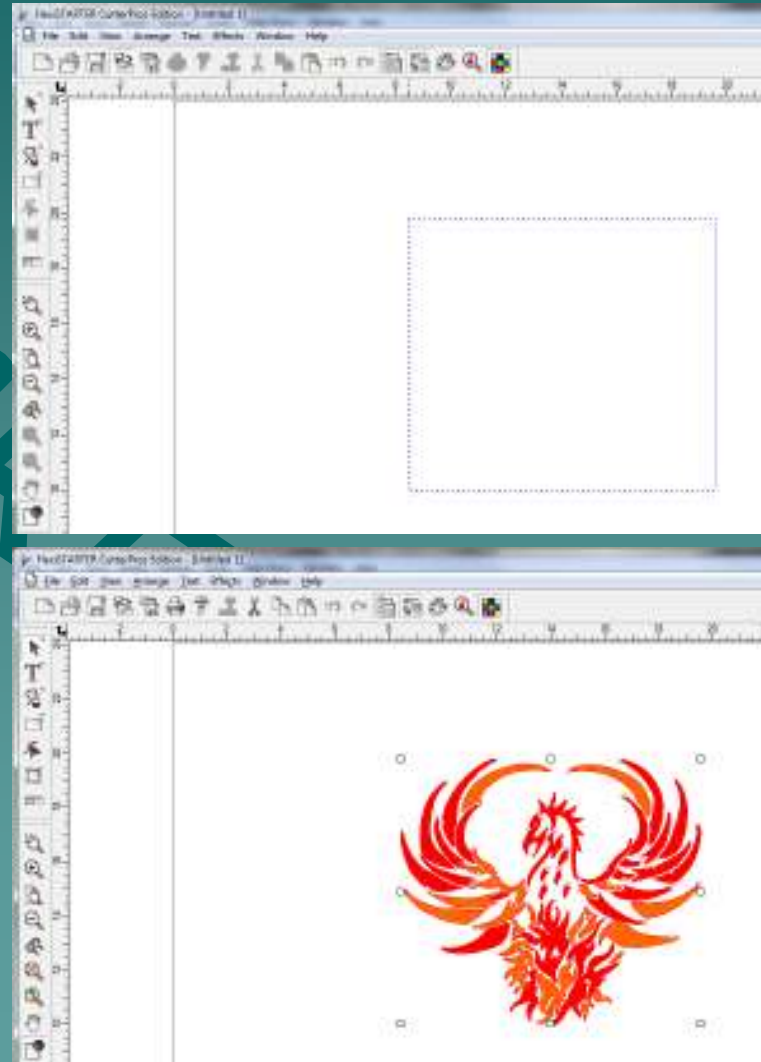
# 1-2 Creating the Contour

- ◆ Browse to the folder where the file is saved.
- ◆ Click the file and click 'Import'.



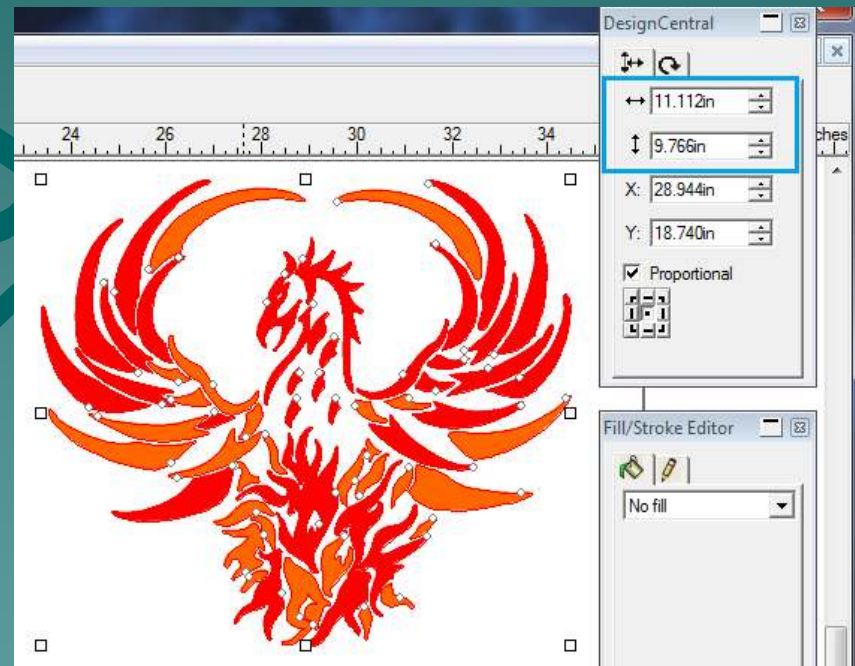
# 1-3 Creating the Contour

- ◆ The image will show up as a blue dotted outline.
- ◆ Click on the screen to place the image in the desired area.



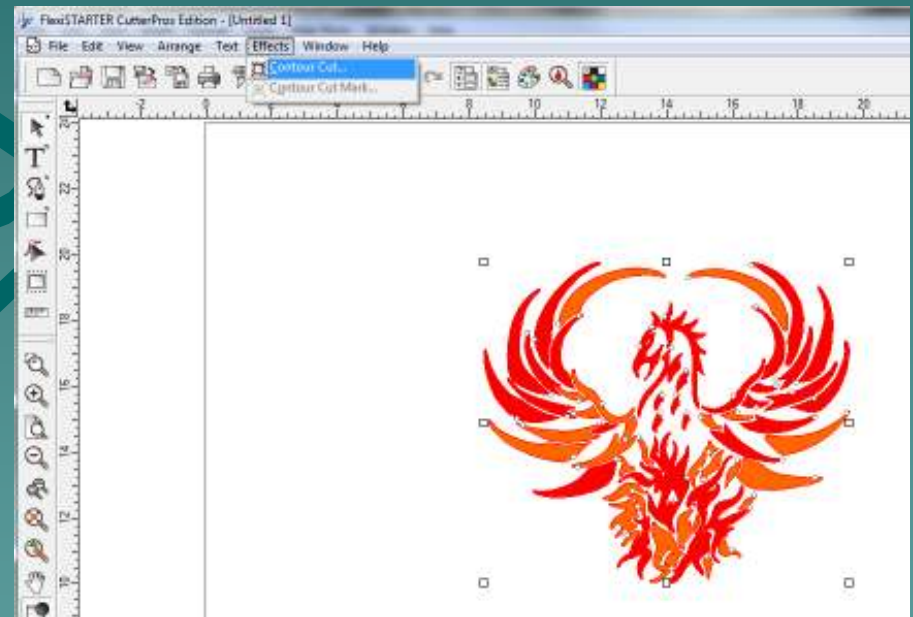
# 1-4 Creating the Contour

- ◆ Set the image size by adjusting the numbers in the up/down and left/right boxes in the Design Central window.
- ◆ Set this size FIRST as the contour cut will not come out correctly if the size is adjusted from the print software.



# 1-5 Creating the Contour

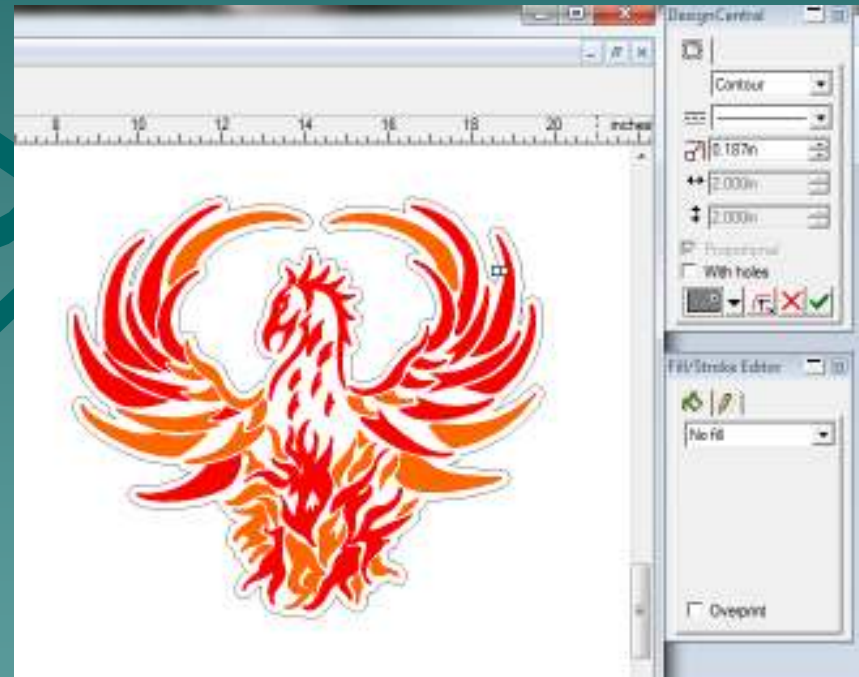
- ◆ If there are no white boxes surrounding the image, click the image to select it.
- ◆ Click the Effects menu and click 'Contour Cut'.





# 1-6 Creating the Contour

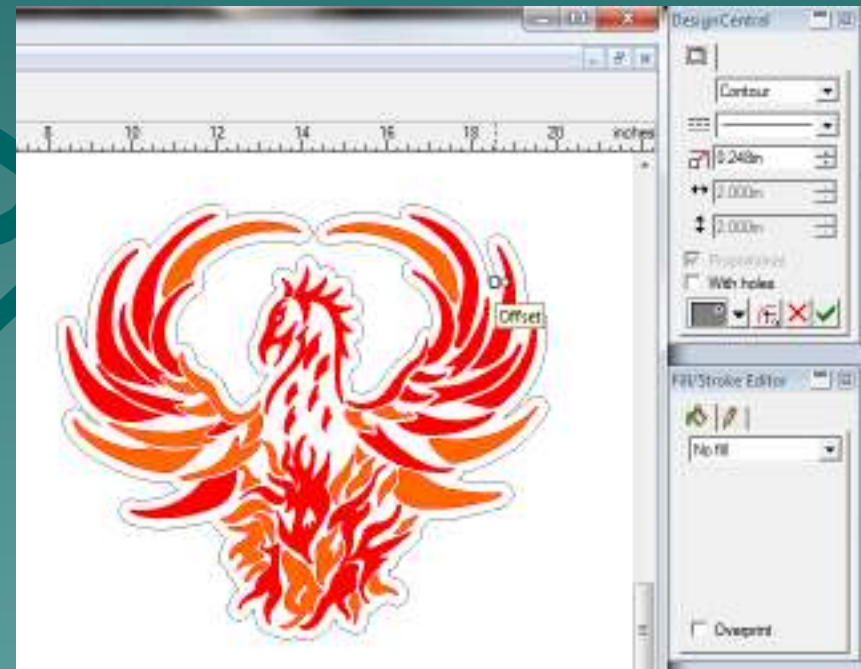
- ◆ A grey border will come up around the image with a small circle and square next to each other.
- ◆ On the Design Central window to the right, a new control screen will pop up with the contour options available.





# 1-7 Creating the Contour

- ◆ To adjust the shape of the contour, click the square and drag it away from the circle.
- ◆ As the square is dragged, the shape of the contour line will change.



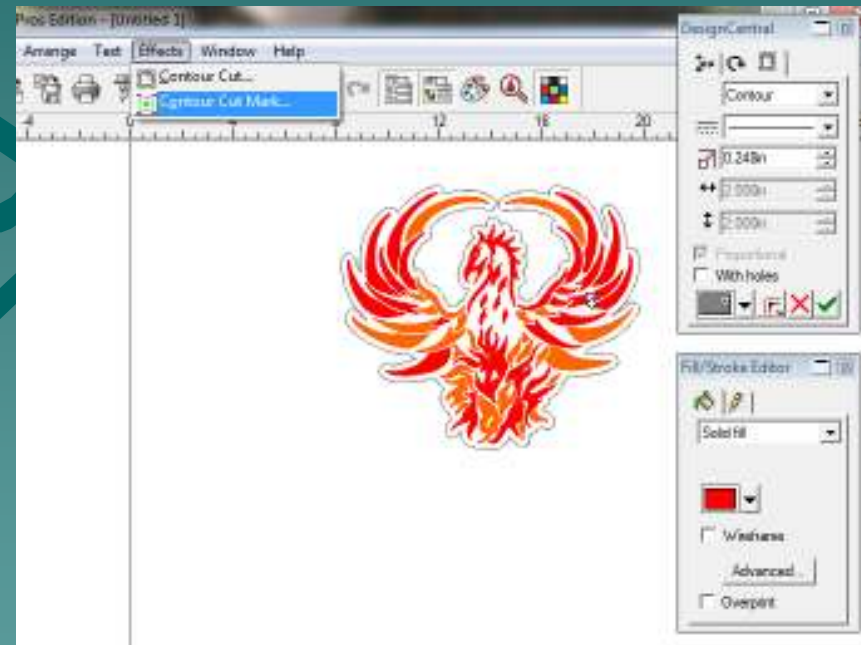
# 1-8 Creating the Contour

- ◆ Once the contour line is set in the desired position, click the green check on the Design Central screen.



# 1-9 Creating the Contour

- ◆ Once the contour line is applied, click the Effects menu, and select 'Contour Cut Mark'.



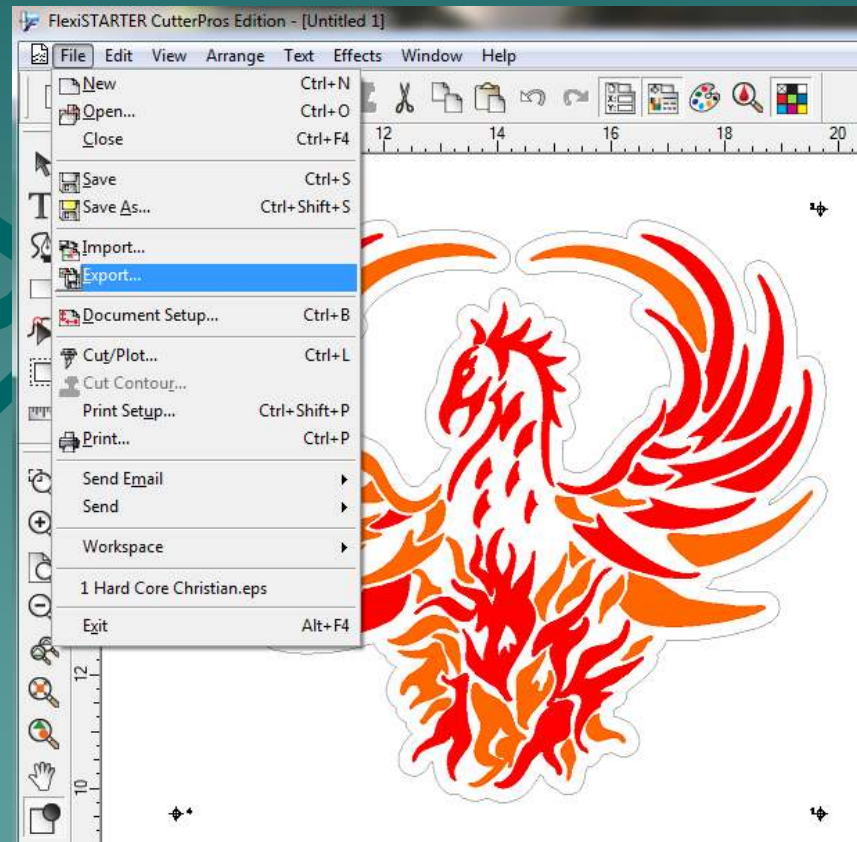
# 1-10 Creating the Contour

- ◆ In the Design Central window, select "4 Port" in the first box.
- ◆ Once 4 Port is selected, 4 registration marks should show up surrounding the image.
- ◆ When finished, click the green check in the Design Central window.



# 1-11 Creating the Contour

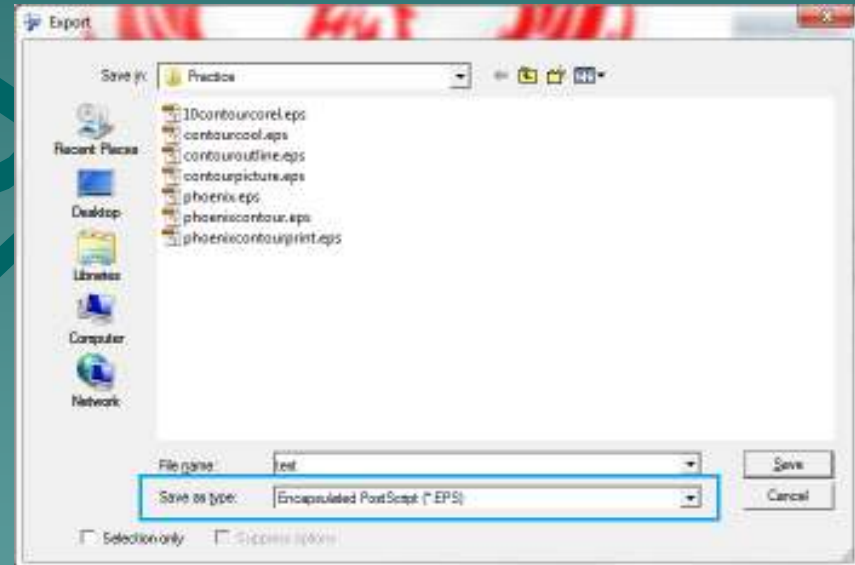
- ◆ The image is now ready to be printed.
- ◆ Go to the File menu, and click 'Export'.





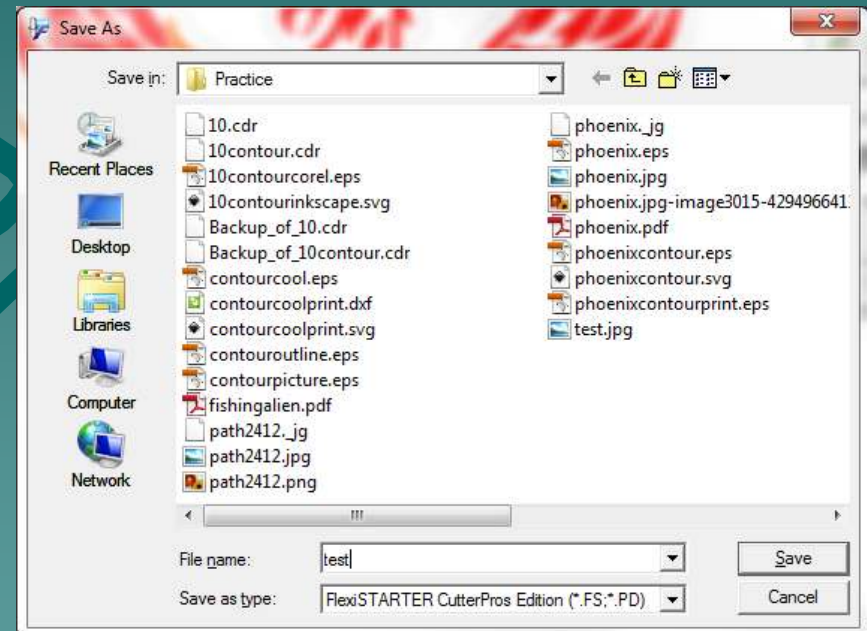
# 1-12 Creating the Contour

- ◆ Browse to the folder you would like it to be saved in.
- ◆ Create a file name.
- ◆ Be sure 'Encapsulated PostScript (eps)' is selected as the file type.
- ◆ Click 'Save' when finished.



# 1-13 Creating the Contour

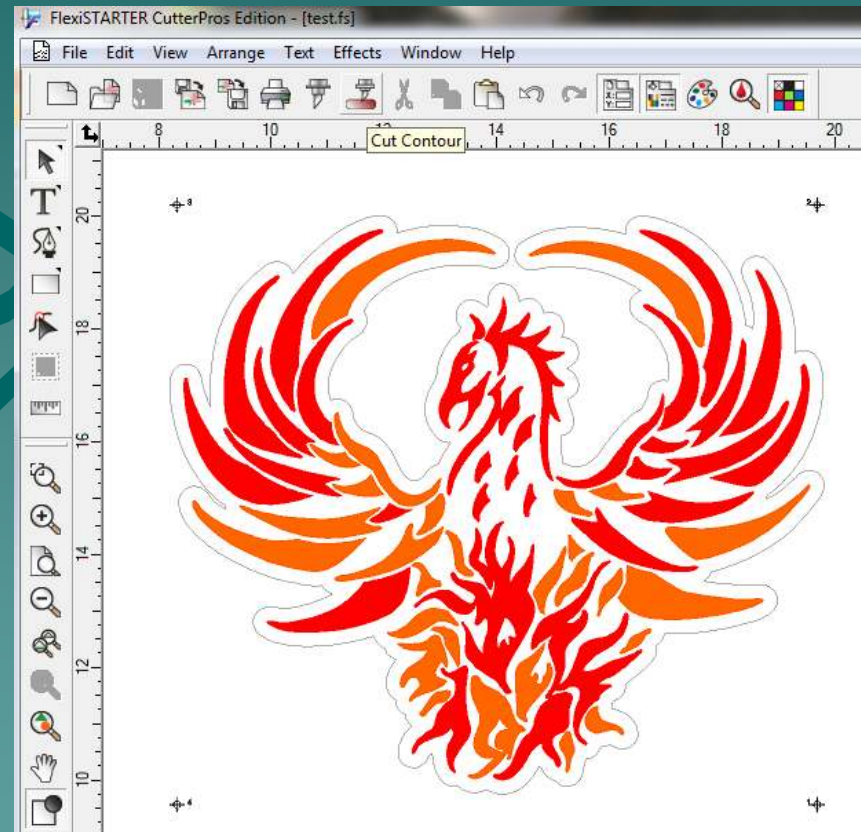
- ◆ Save the file for future use.
- ◆ Go to the File menu.
- ◆ Click 'Save As'
- ◆ Browse to the folder you would like the file to be saved in.
- ◆ Click 'Save' when finished.





# 2-1 Cutting the Contour

- ◆ Once the image is printed, put the printed vinyl into the cutter.
- ◆ Click the Cut Contour icon on the Flexi screen.



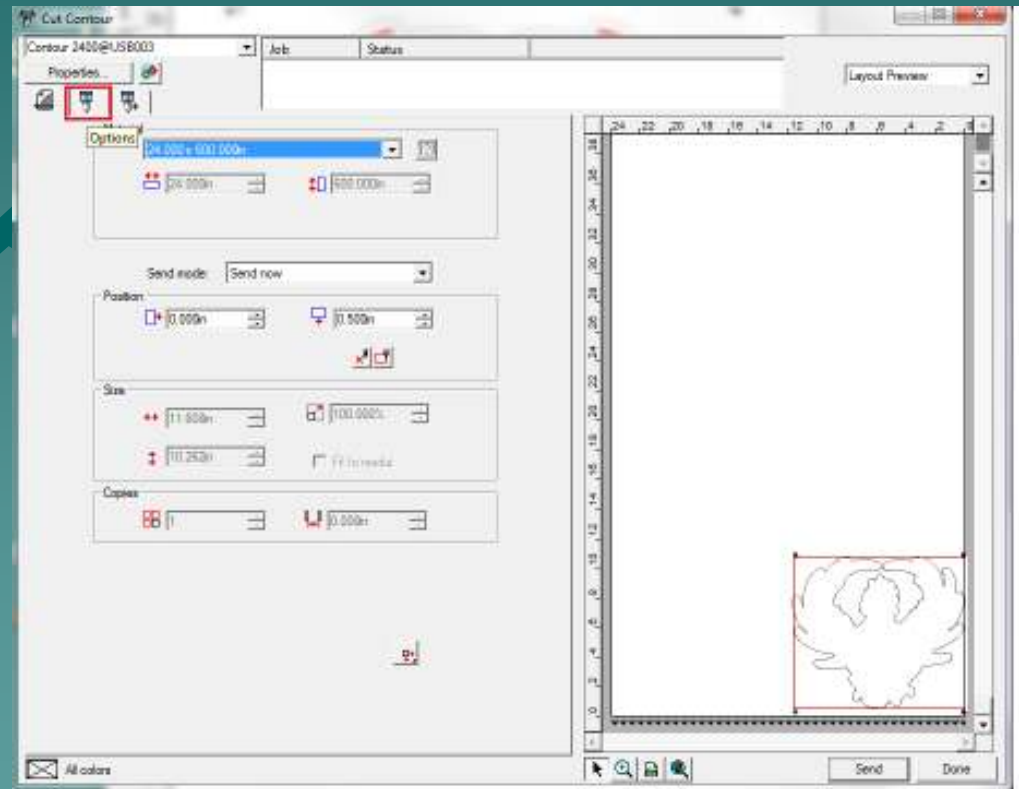
## 2-2 Cutting the Contour

- ◆ When this screen pops up, click 'OK'.



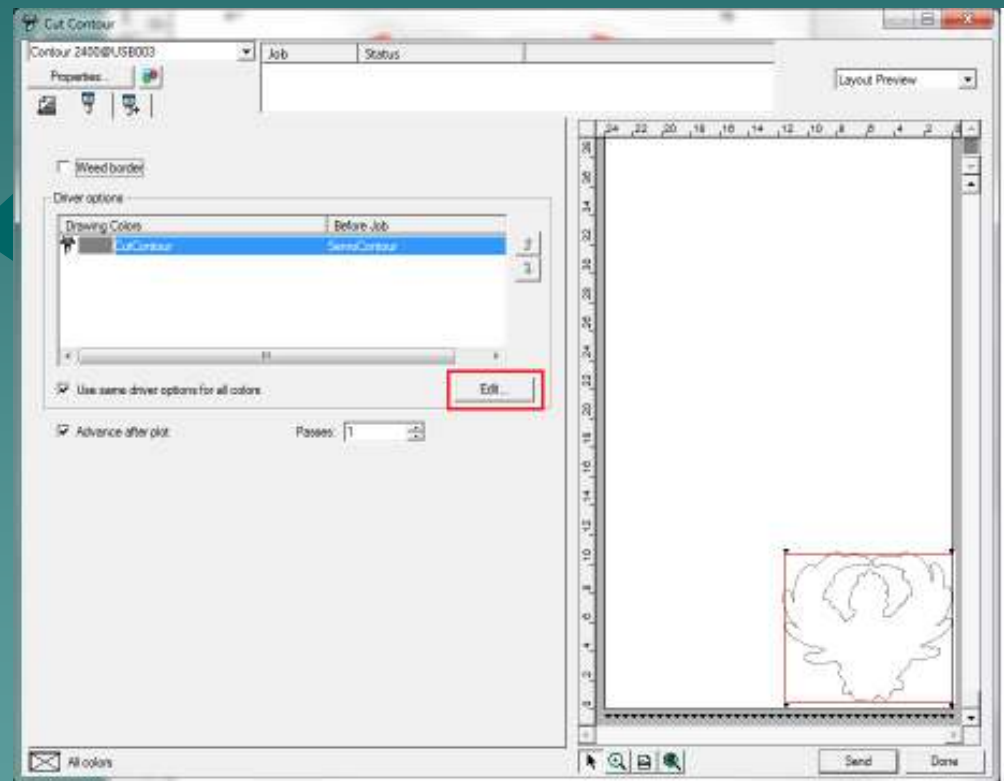
## 2-3 Cutting the Contour

- ◆ From the Cut Contour screen, click the 'Options' tab.
- ◆ This is the second tab over on the top left side.

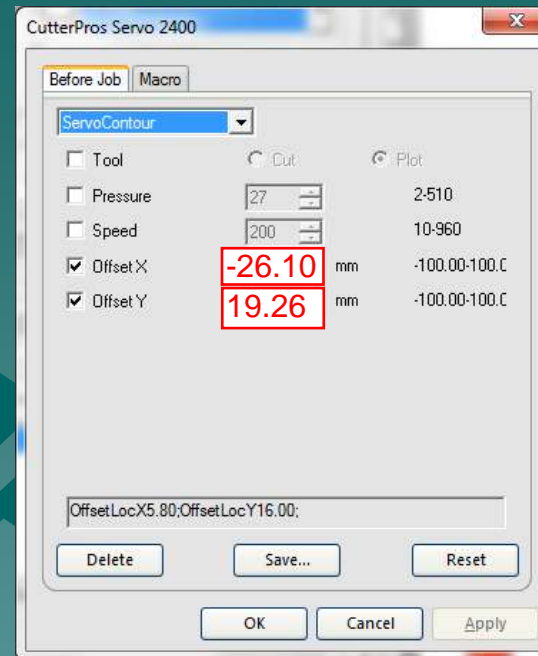
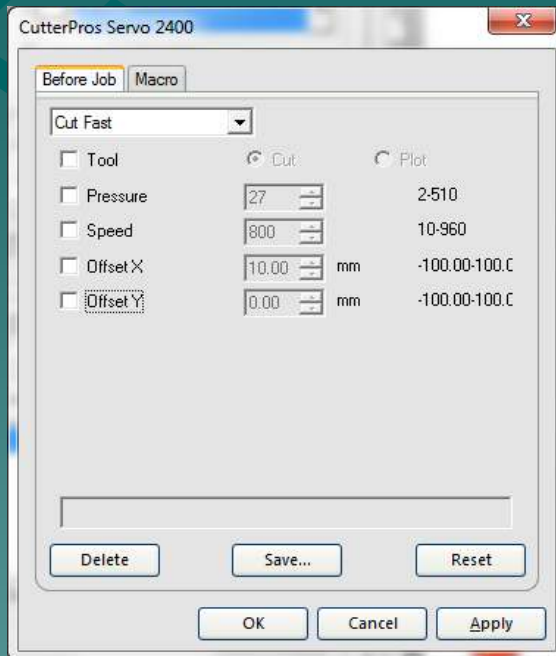


## 2-4 Cutting the Contour

- ◆ Click the 'Edit' button to set the contour settings.



# 2-5 Cutting the Contour

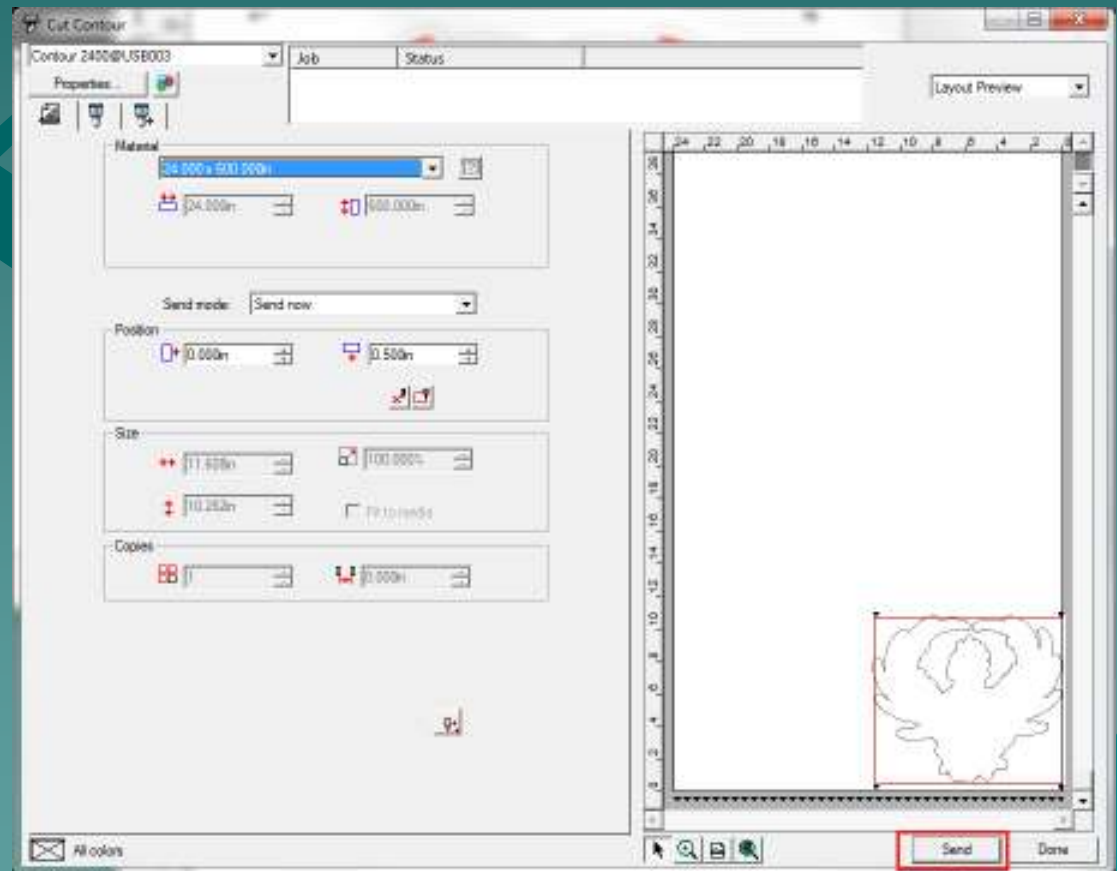


- ◆ The screen on the left is the default settings.
- ◆ Change the settings as shown on the right side screen.
- ◆ Click Save when finished. It will give an option to save the settings. Type a name and click OK. Click OK again to exit this screen.

-26.10 x 19.26 are average values. You may need to tweak these values for your specific cutter. This is the distance from the tip of the blade to the laser dot and will vary with manufacturing tolerances. The best way to calibrate these numbers is to contour cut a 3" x 3" box with a zero offset contour with the offsets above set to 0 x 0. Measure the distance the contour is off from the box and enter those measurements into the offsets above and it should be very accurate. Measurement with a set of calipers will produce the most accurate results.

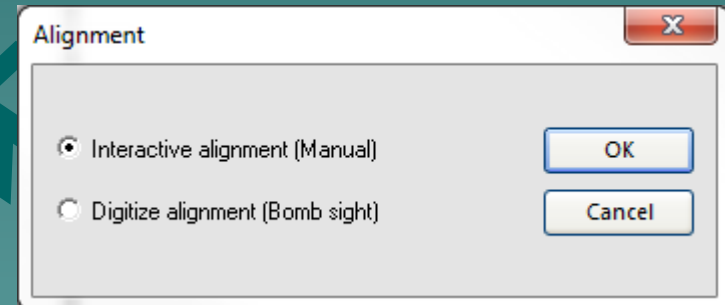
## 2-6 Cutting the Contour

- ◆ Be sure the cutter registration light is turned on.
  - If not, click the button on the control panel labeled 'Laser'.
- ◆ When ready to cut, click 'Send'.



## 2-7 Cutting the Contour

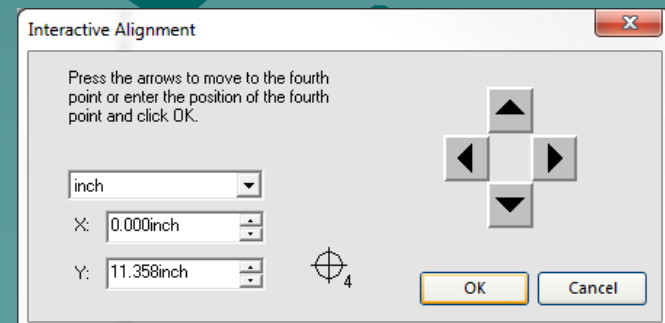
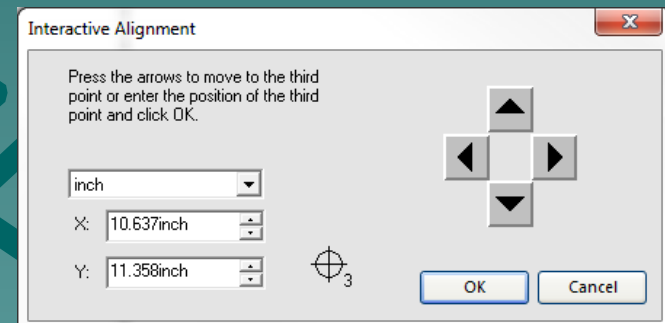
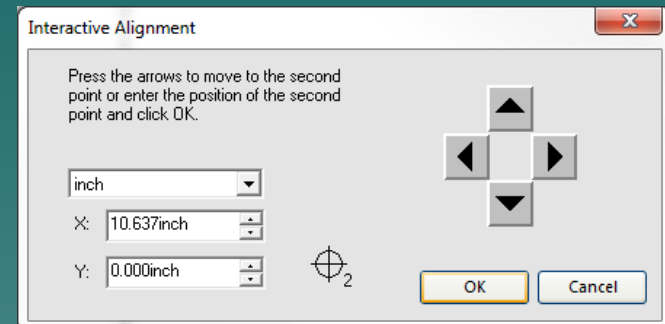
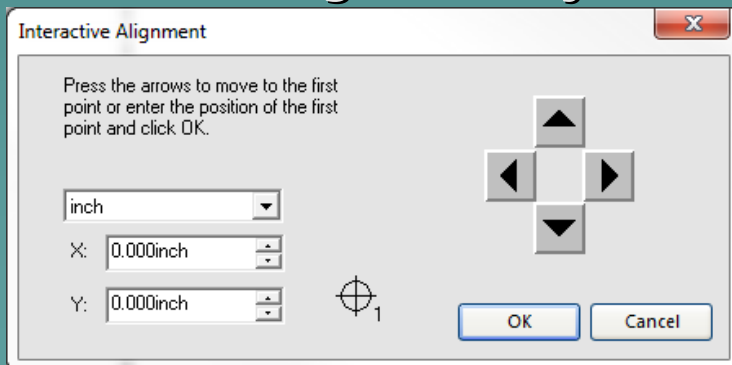
- ◆ A screen will pop up on the Production Manager.
- ◆ Select 'Manual' and click OK.





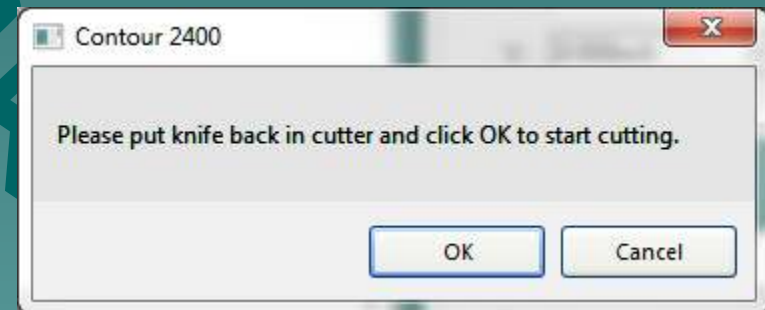
# 2-8 Cutting the Contour

- ◆ Confirm the LED light is in the direct center of each registration mark.
- ◆ If not, use the on screen arrows to adjust the LED light.
- ◆ Click OK on each screen when the light is adjusted.



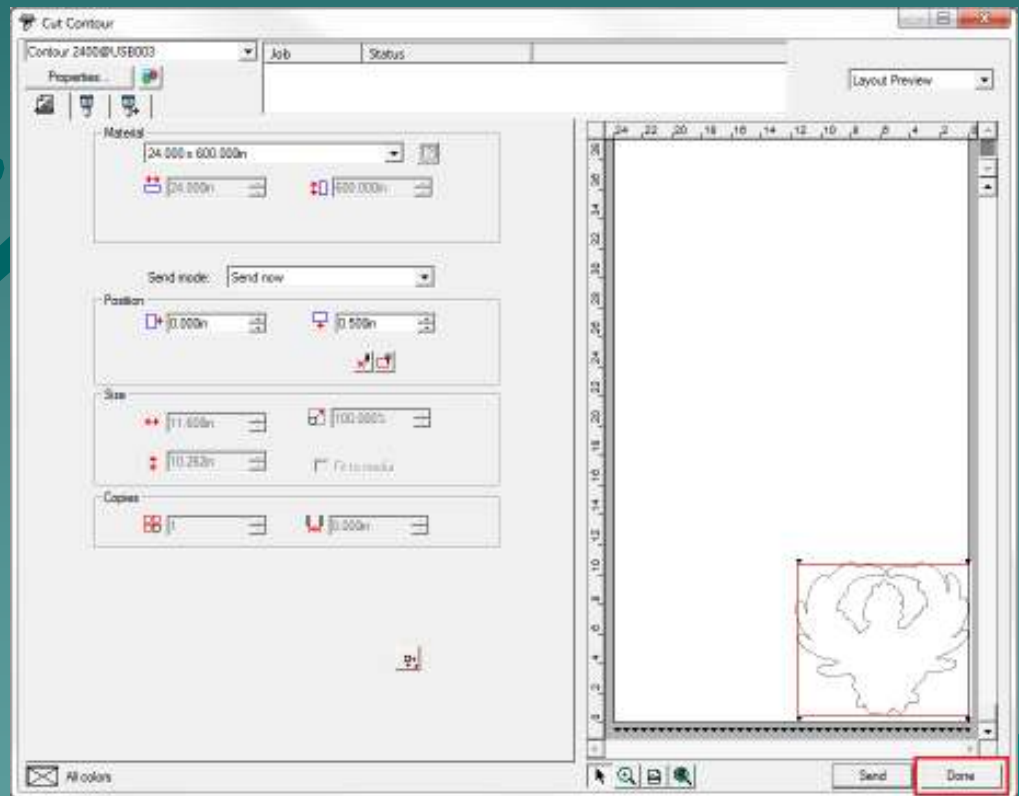
## 2-9 Cutting the Contour

- ◆ Click OK
- ◆ The cutter will now begin cutting the contour.



# 2-10 Cutting the Contour

- ◆ When finished with the cut, click 'Done'.



# The End

Please review our tutorials for more information on particular features.

<http://www.cutterpros.com/downloads> for further information.

To speak with a technician, submit a ticket at <http://www.cutterpros.com/support/> or call 888-828-8776 x227

CutterPros.com/Hahn Ventures LLC is NOT liable for any software/attachments/instructions/download links/content contained in this presentation. Use the contents of this presentation AT YOUR OWN RISK. CutterPros.com/Hahn Ventures LLC is NOT responsible for any damages incurred to your computer hardware/software or any possible viruses/Trojans/malware or any other type of damaging programs that may be contained in the links and/or attachments. It is your responsibility to verify the contents before using any of the information contained in this presentation. By using the contents in this email you agree to hold CutterPros.com/Hahn Ventures LLC harmless of all liability and damages. You agree that you are totally responsible for what you put on your computer, software you install on your computer and files you download to your computer.