

Signcut Pro

A Visual Quick Guide for Mac Users

CUTTERPROS.COM

Chapters

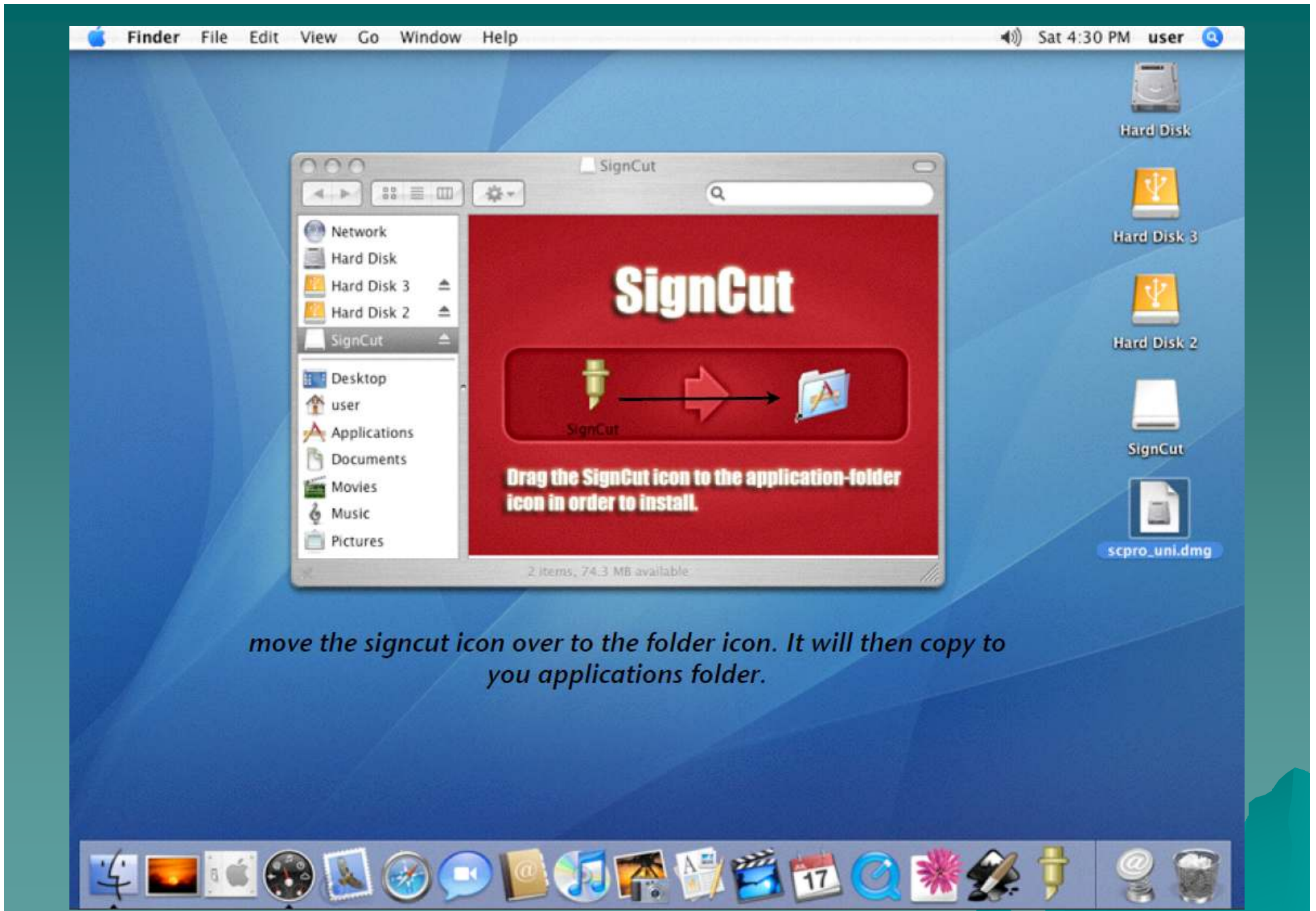
- ◆ 1. Downloading the Driver
- ◆ 2. Signcut Installation

1-1 Downloading the Driver

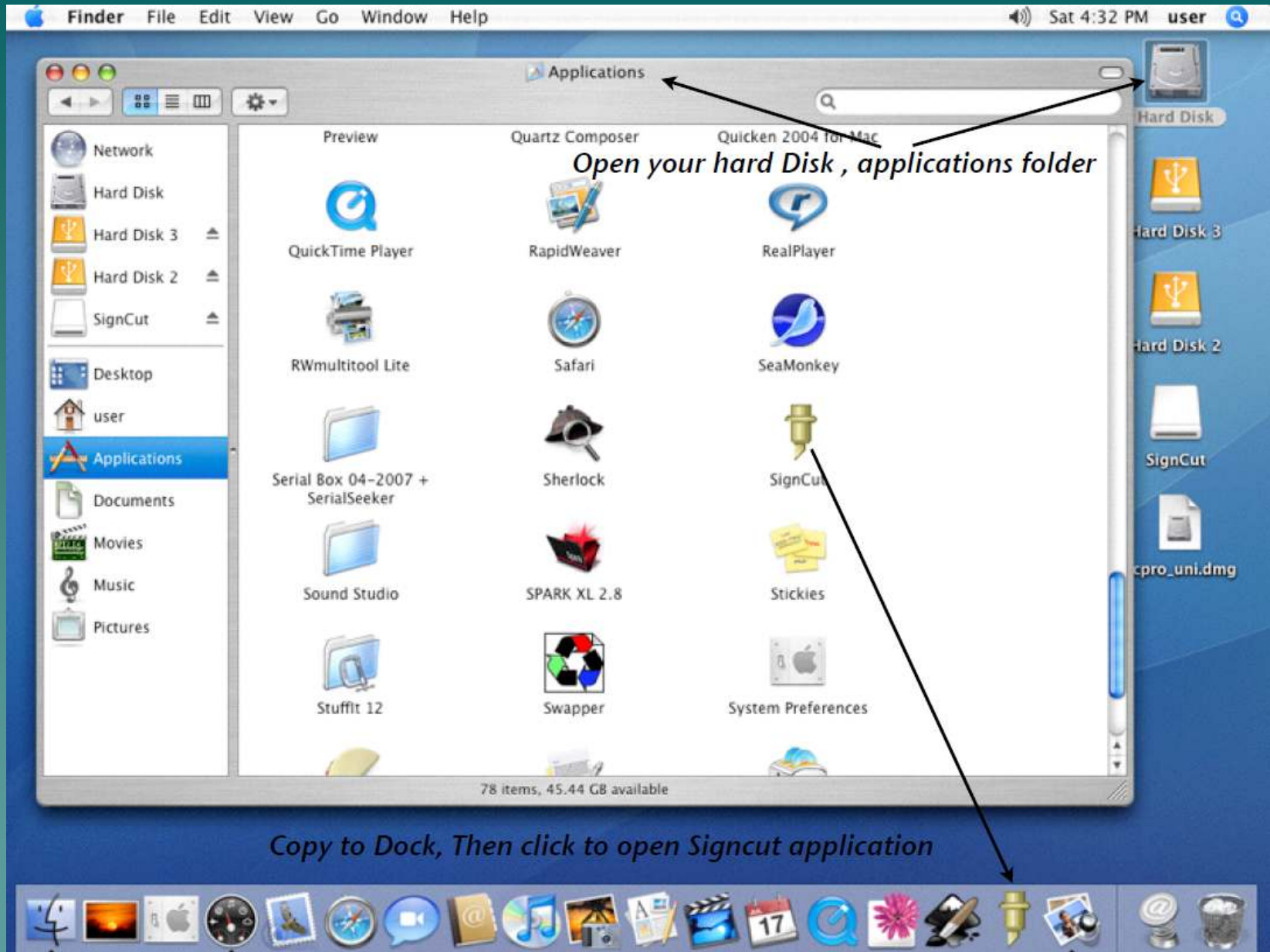
- ◆ *First open your web browser and type*
 - *<http://www.cutterpros.com/downloads/>*
- ◆ *Scroll down to the area that reads:*
 - **Drivers and Downloads**
- ◆ *Locate the link for mac that reads:*
 - CR630/1200 FTDI Driver v2.2.9 Mac 10.4+
- ◆ *Click that link and download to your computer.*
- ◆ *Next locate and double click on the package*
- ◆ *Follow the command prompts to install the driver.*

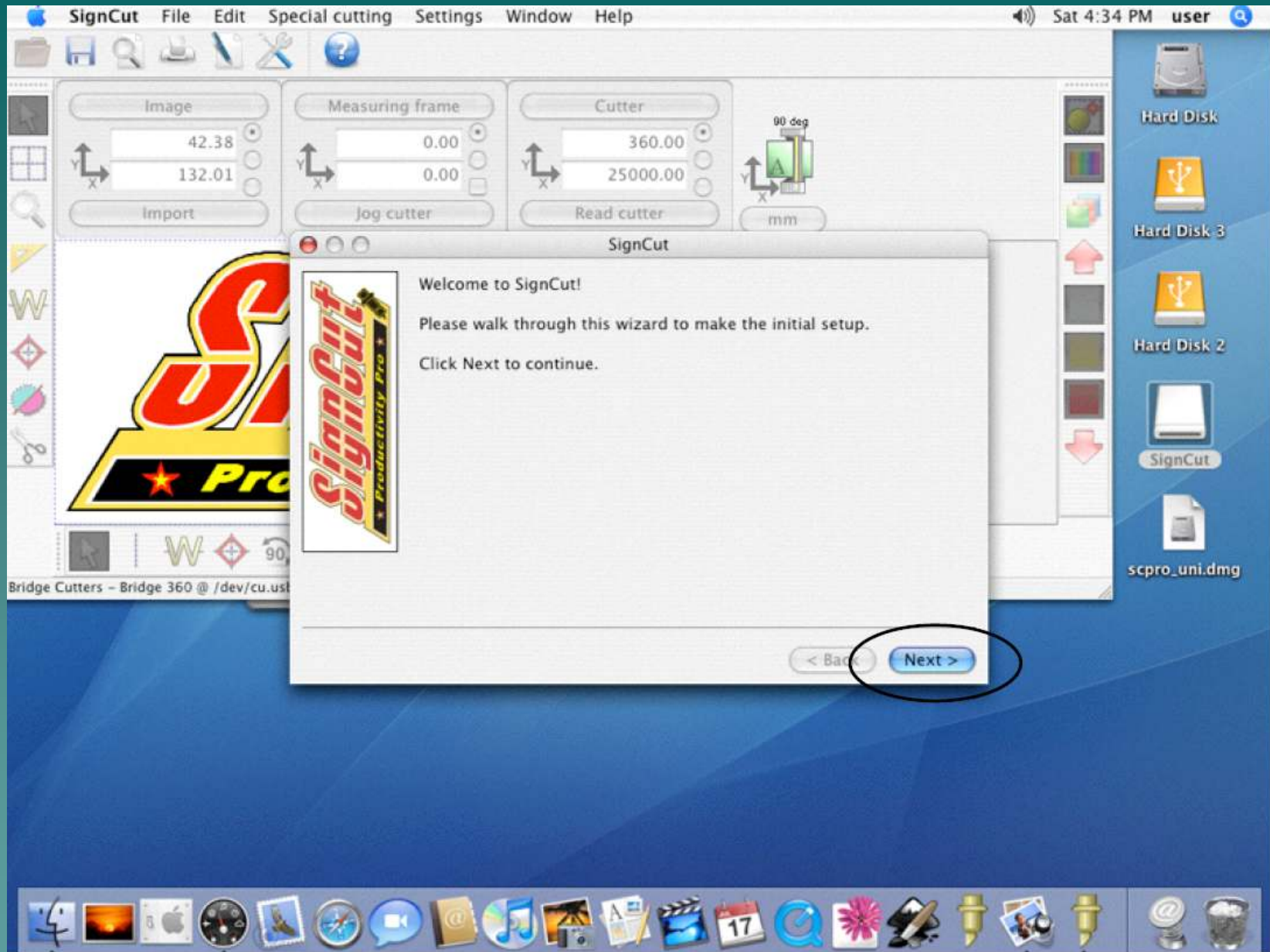
2-1 Signcut Installation

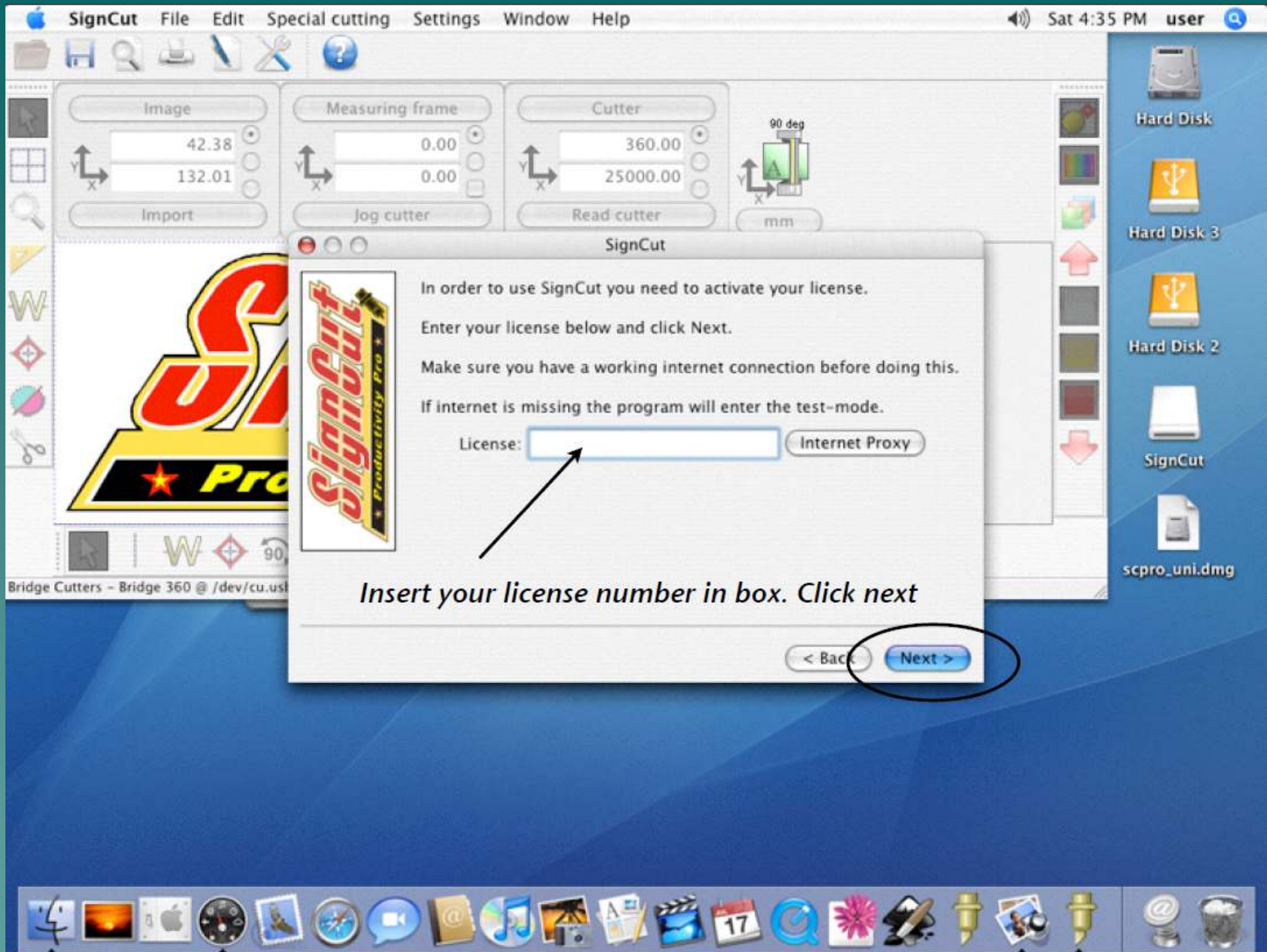
- ◆ *Open the box with the cutter, Find the Signcut Document of Value attached to the invoice.*
- ◆ *Open your web browser and enter*
 - *<http://www.signcutpro.com/bundle.html>*
- ◆ *A window will appear, enter the number on the document of value along with the information needed to complete the page.*
- ◆ *Click register. It will then send you an email with your license number.*
 - *The license also appears on the next web page after clicking 'Register'.*
- ◆ *In the email page, scroll down the page and locate the appropriate file to download.*
- ◆ *Click on the file which represents your computer*
 - *http://www.signcutpro.com/files/scpro_uni.dmg for Mac*
- ◆ *The file should then download to your desktop*
- ◆ *Click to open the file on the desktop*



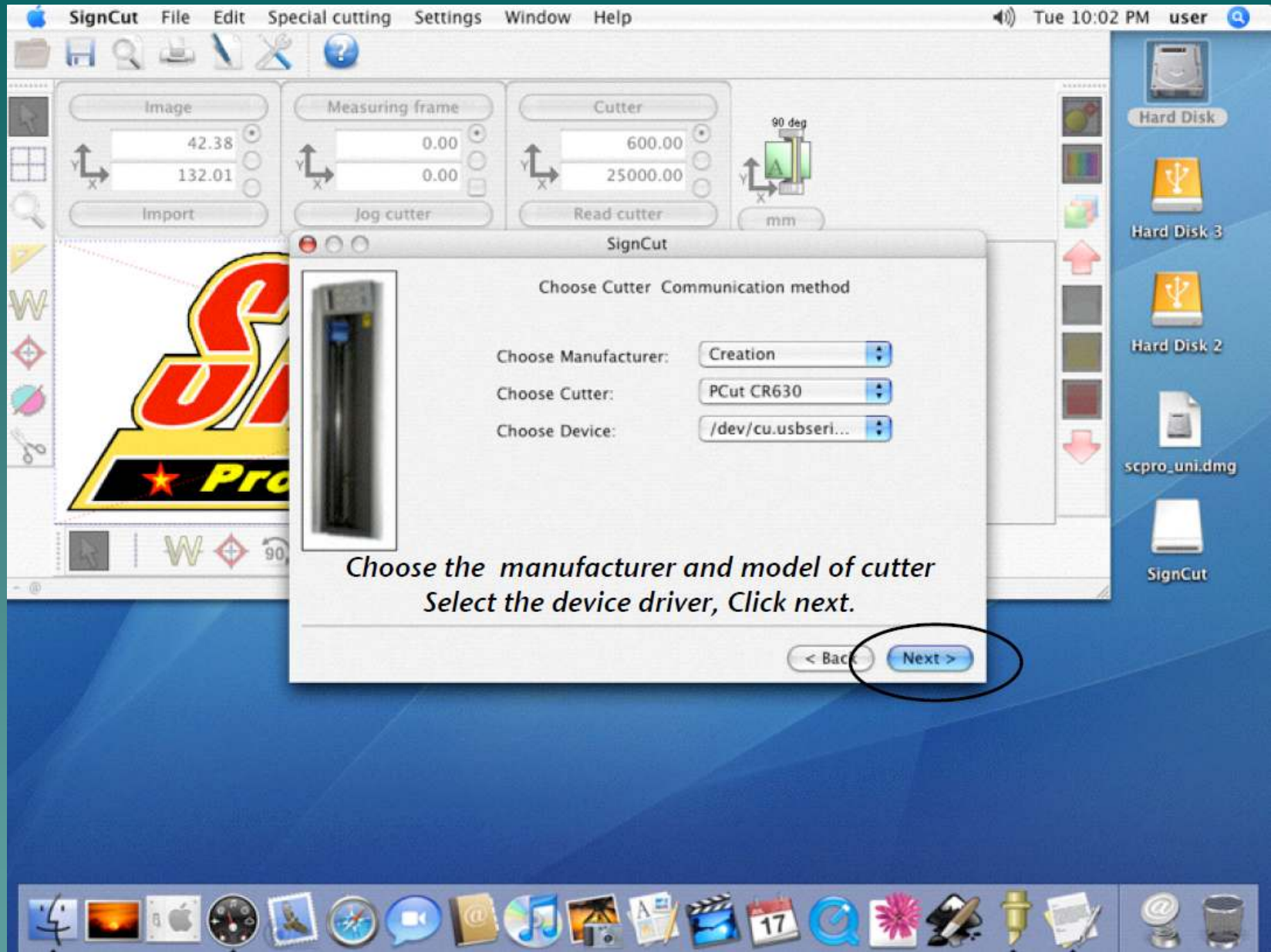
move the signcut icon over to the folder icon. It will then copy to you applications folder.



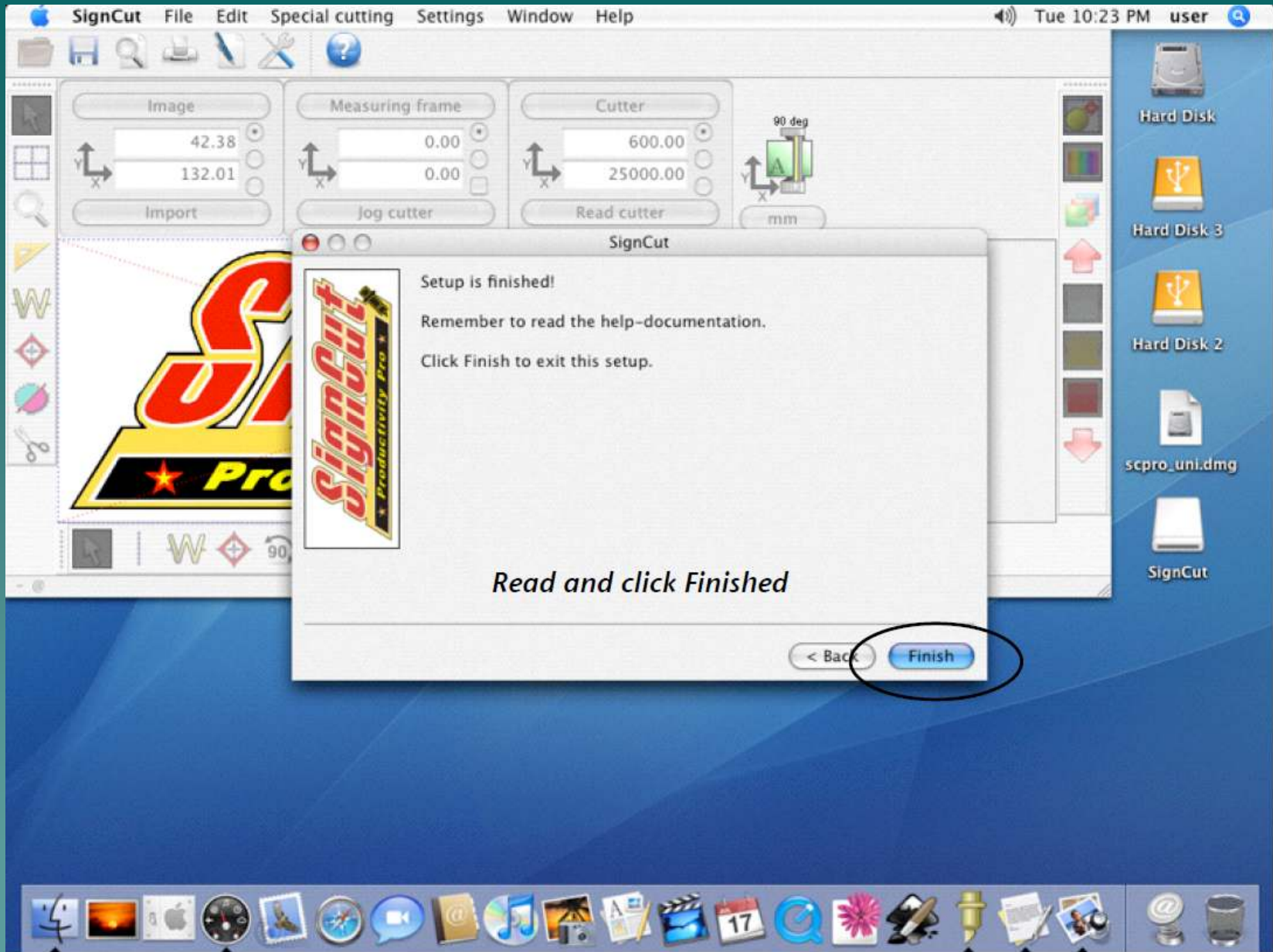


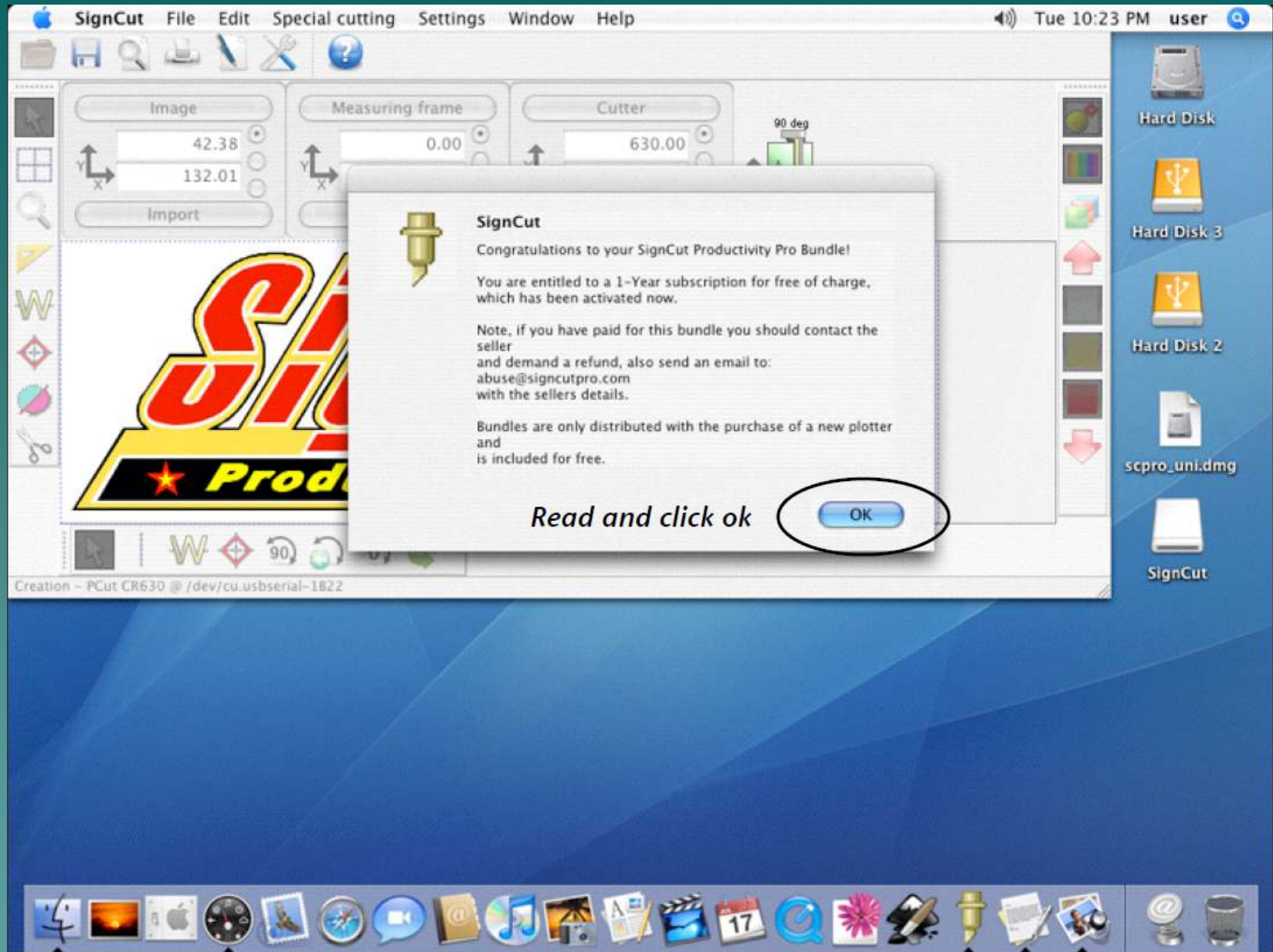


Insert your license number in box. Click next



*Choose the manufacturer and model of cutter
Select the device driver, Click next.*





SignCut

Congratulations to your SignCut Productivity Pro Bundle!

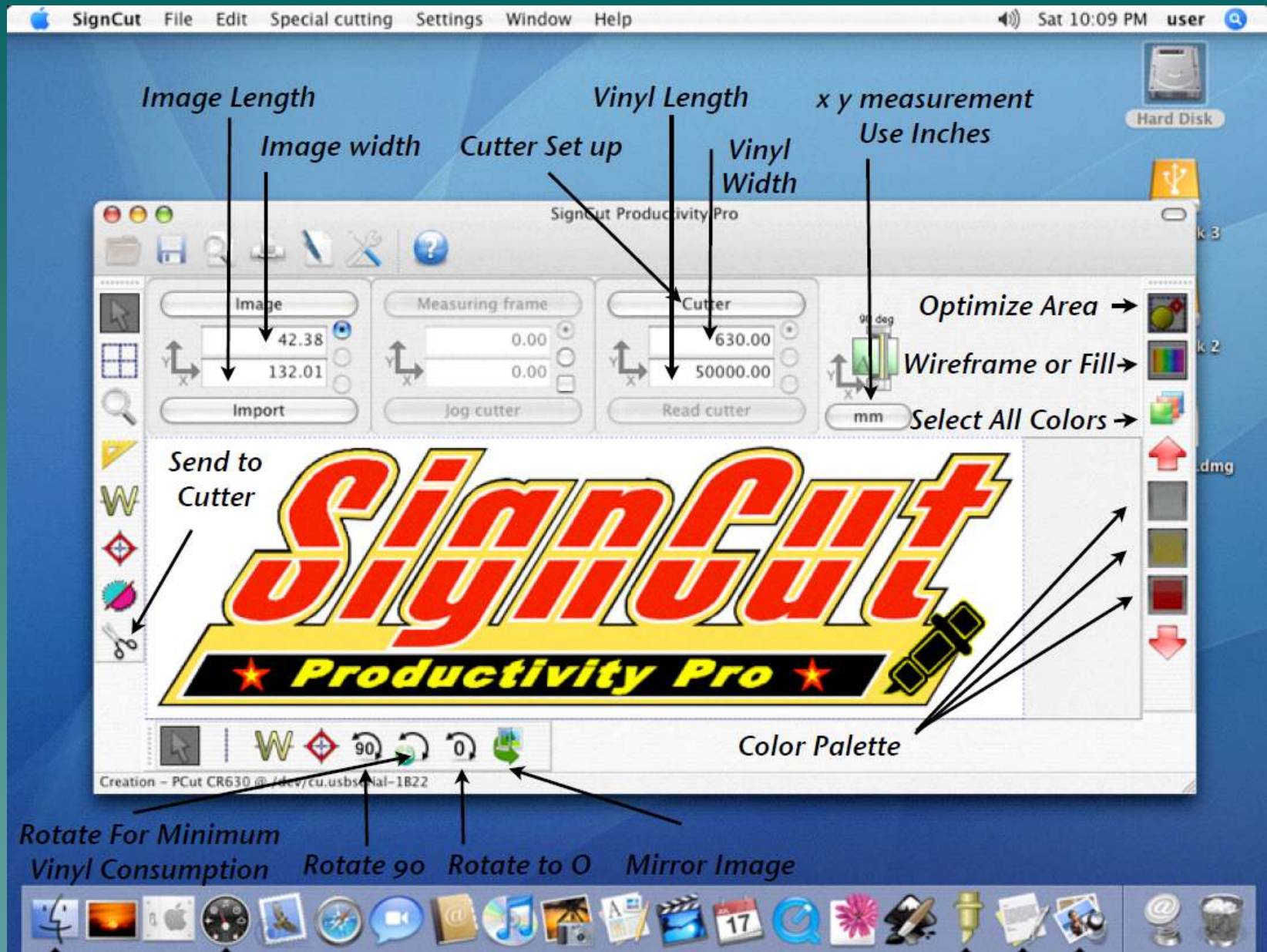
You are entitled to a 1-Year subscription for free of charge, which has been activated now.

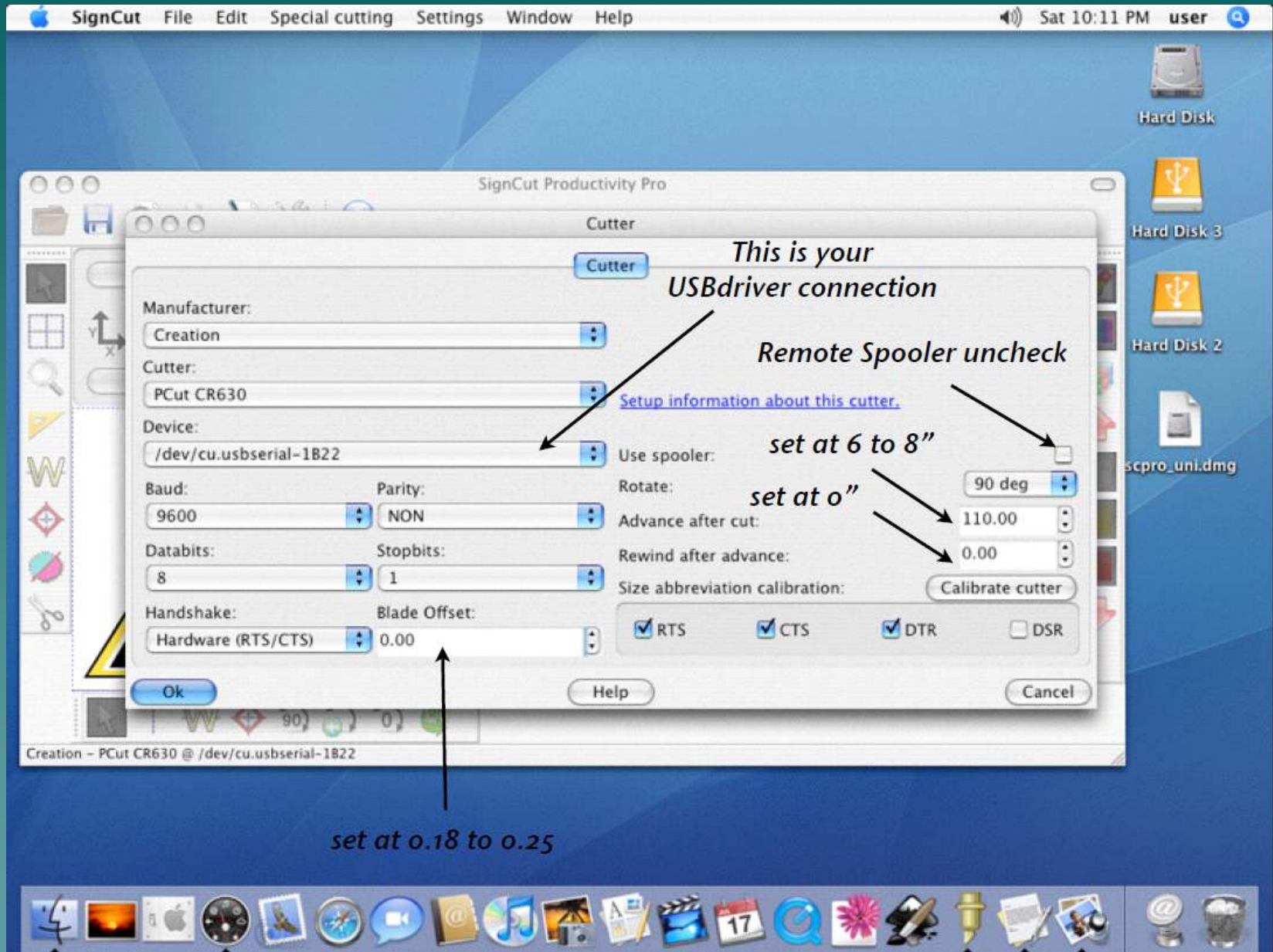
Note, if you have paid for this bundle you should contact the seller and demand a refund, also send an email to: abuse@signcutpro.com with the sellers details.

Bundles are only distributed with the purchase of a new plotter and is included for free.

Read and click ok

OK





Click on image to set up your Image height and width Below

SignCut Productivity Pro

Sign size

	Width	Height
Image:	132.01	42.38

Proportional Use the sign concept.

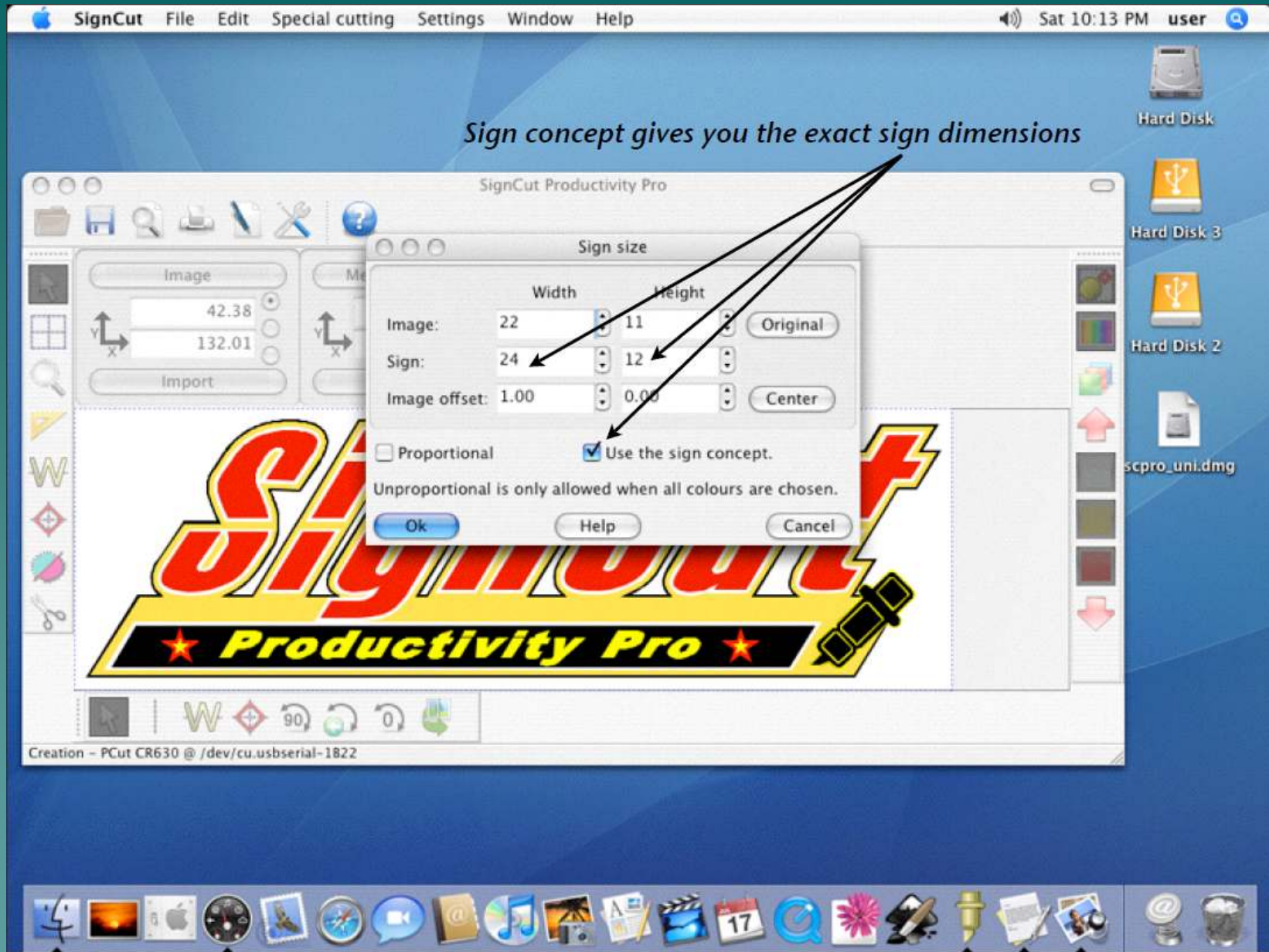
Unproportional is only allowed when all colours are chosen.

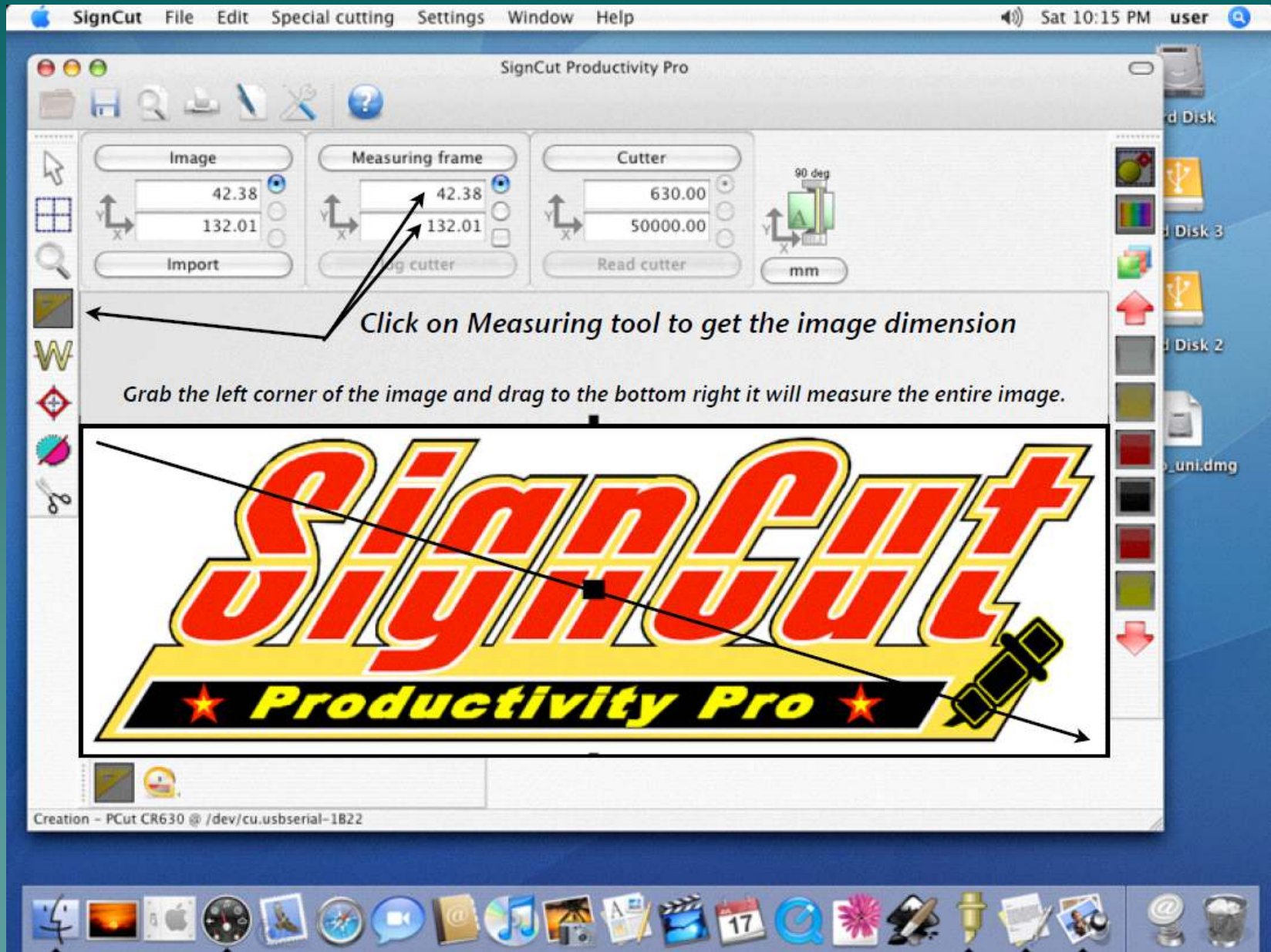
Original

Ok Help Cancel

Creation - PCut CR630 @ /dev/cu.usbserial-1B22







APPLICATION OVERVIEW FOR CUTTING (Clockwise)

The screenshot shows the SignCut Productivity Pro software interface. The main workspace displays a logo for 'SignCut Productivity Pro' with a yellow and red color scheme. The interface includes a top menu bar, a toolbar on the left, and a control panel on the right. The control panel has sections for 'Image', 'Measurement', and 'Cutter'. The 'Image' section shows dimensions of 42.38 and 132.01. The 'Measurement' section shows 'Measurement Increments in mm's' set to 0.00. The 'Cutter' section shows '630.00' and '50000.00'. A '90 deg' rotation button is visible. The status bar at the bottom shows 'Creation - PCut CR63D @ /dev/cu.usb... 22'. Annotations with arrows point to various parts of the interface, including the 'Image' section, the '90 deg' button, the 'Cutter' section, the logo, and the color selection palette on the right.

**1. Image size 23" or Less
If Larger It will split the layout
into 2 or more pieces**

2. Vinyl size = 12" 15" or 24"

3. Select Each Color Individually

**4. Rotate 90 to minimize waste
When rotating, if you length exceeds
24" do not use the rotate button**

**5. Send to Cutter
Click then follow
prompts**

Preferences
Measurement
Cutter
Image
Measurement Increments in mm's
Optimize Area
Wireframe tool
Select All Colors at Once
Measuring Tool
This is your vinyl width
This is your vinyl length
Mirror Image or Flip horizontal
This is your current logo Orientation view
*The items that are numbered, are the order in which you should follow to prepare to cut out your vinyl

The End

Please review Signcut tutorials for more information on particular features.

<http://www.cutterpros.com/downloads> for further information.

To speak with a technician, email techsupport@cutterpros.com or call 888-828-8776 x227

CutterPros.com/Hahn Ventures LLC is NOT liable for any software/ attachments/ instructions/ download links/ content contained in this presentation. Use the contents of this presentation AT YOUR OWN RISK. CutterPros.com/Hahn Ventures LLC is NOT responsible for any damages incurred to your computer hardware/software or any possible viruses/Trojans/malware or any other type of damaging programs that may be contained in the links and/or attachments. It is your responsibility to verify the contents before using any of the information contained in this presentation. By using the contents in this email you agree to hold CutterPros.com/Hahn Ventures LLC harmless of all liability and damages. You agree that you are totally responsible for what you put on your computer, software you install on your computer and files you download to your computer.

CUTTERPROS.COM