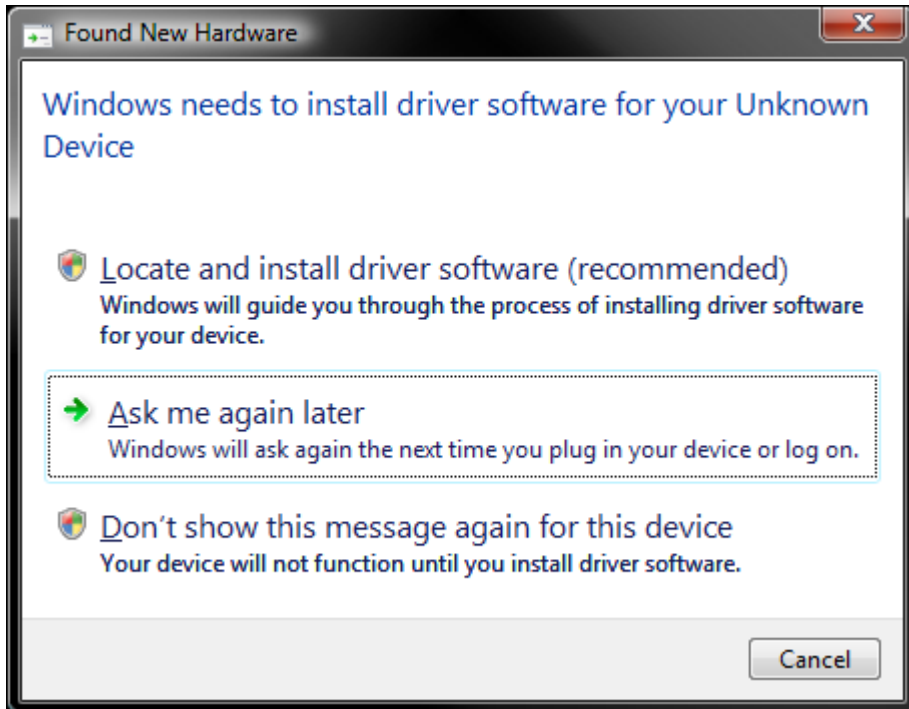
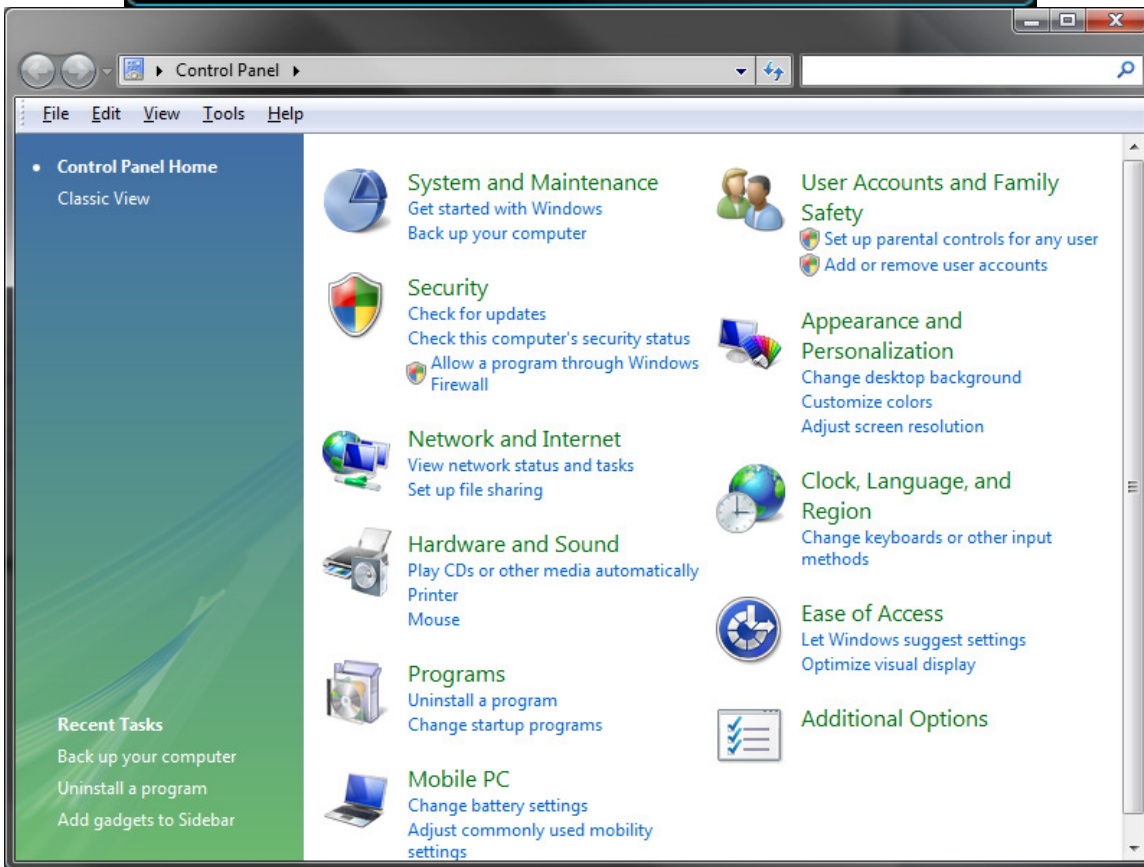


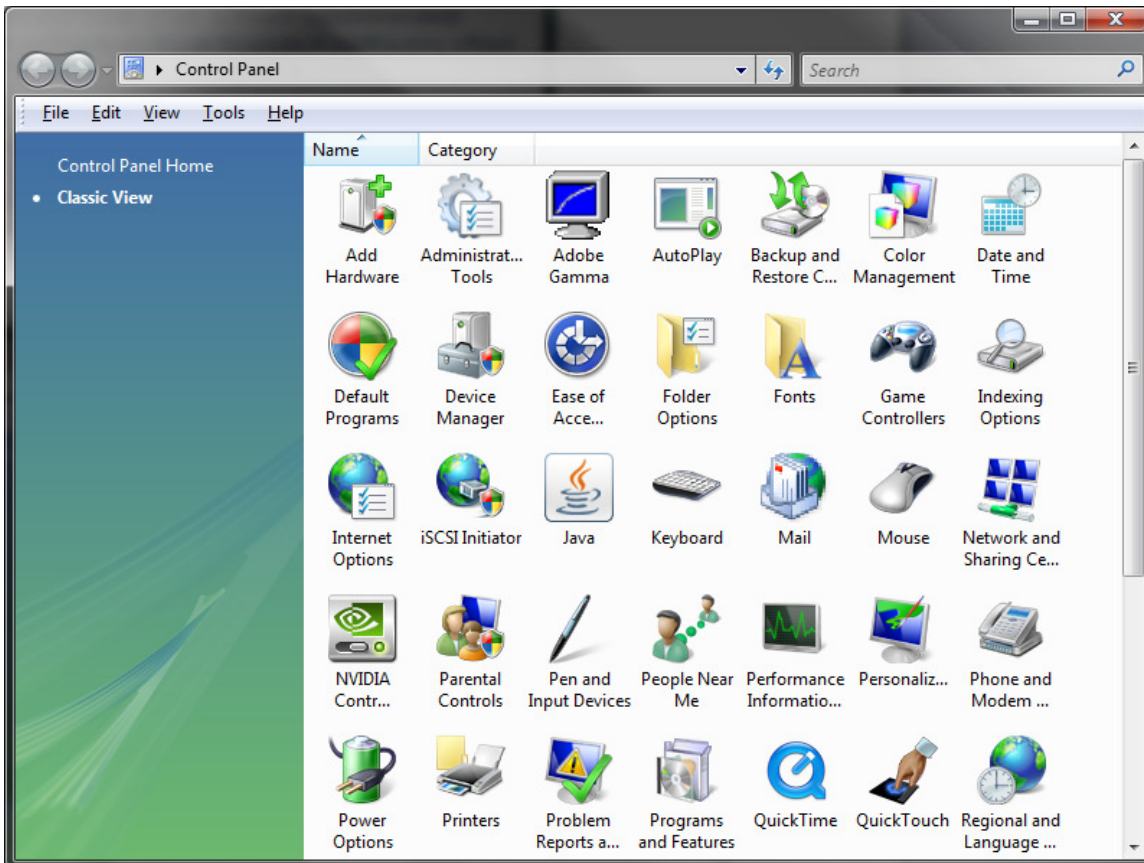
# CR-730/CR-1300 Install instructions



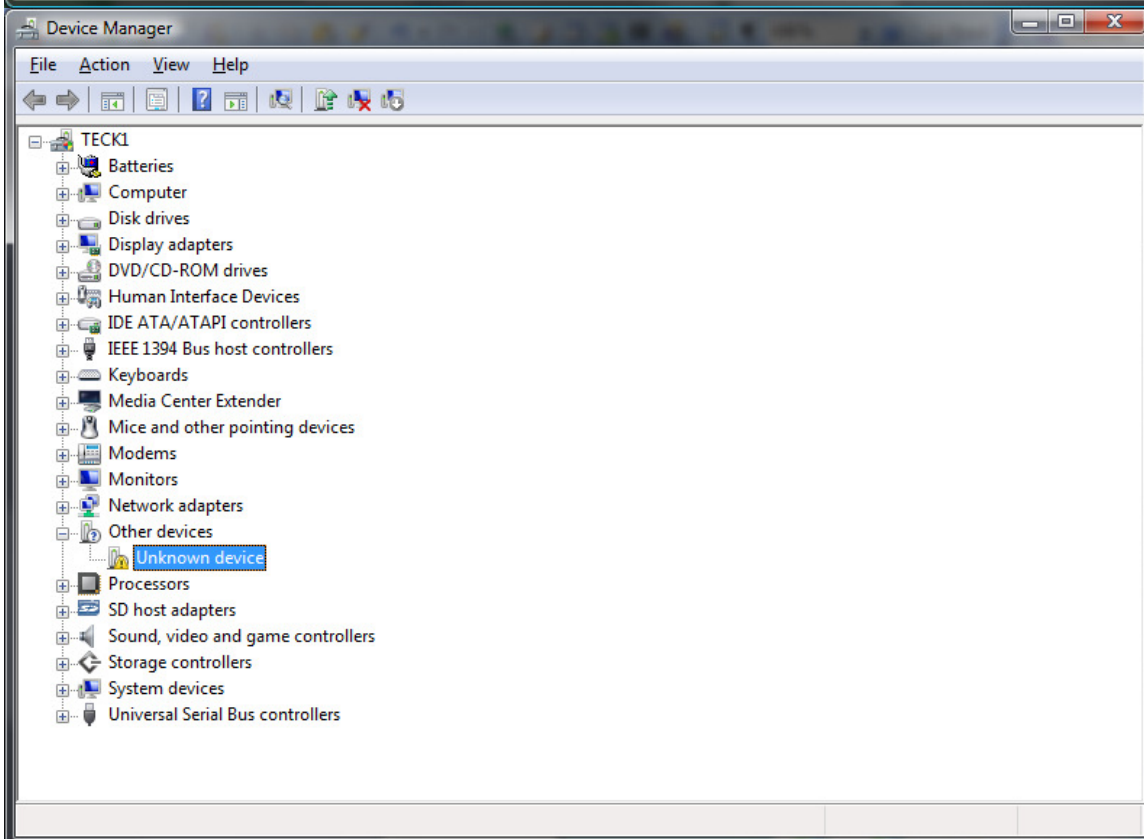
1. Plug the usb cable from the cutter and you will see this screen.



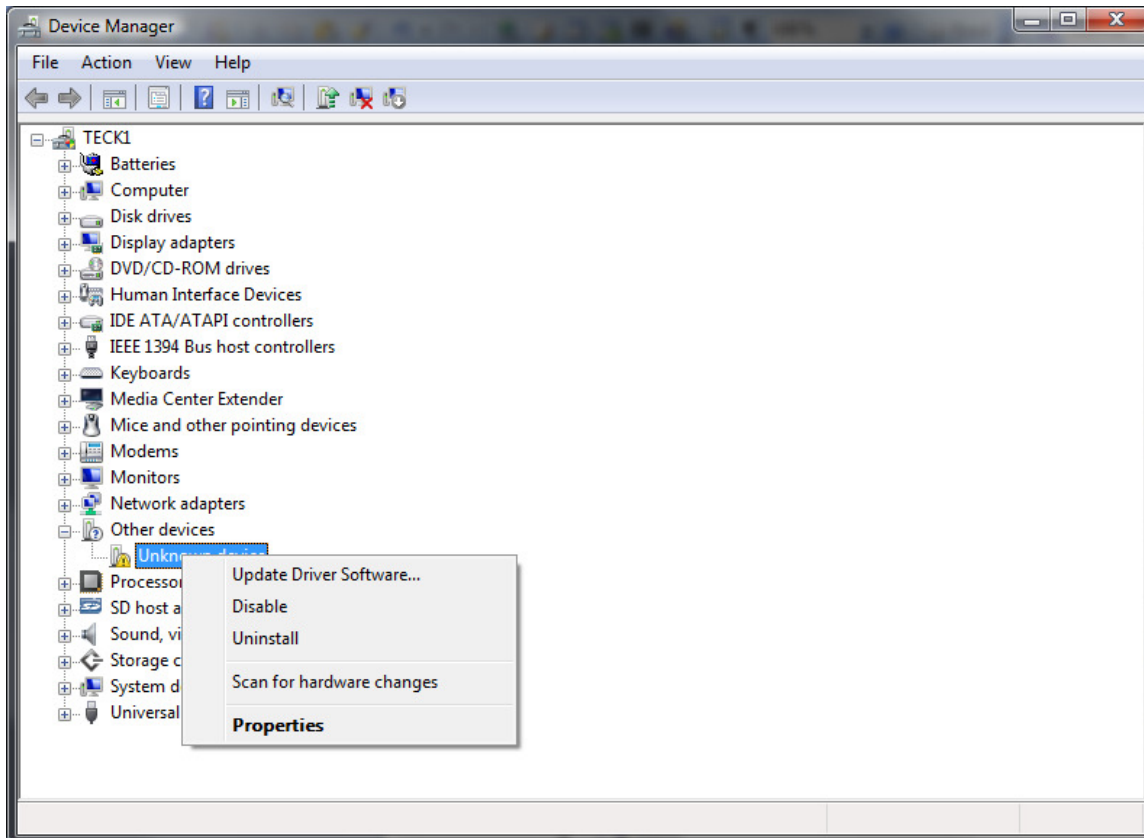
1. Go to device manager by control panel. To get to device manager click on: start; control panel; and look for device manager (you may need to click on classic view on the left side).  
➤ *If you are using Windows Xp use these directions: once you get into control panel, look for system. The next screen that follows, look for a tab named hardware, then choose device manager.*



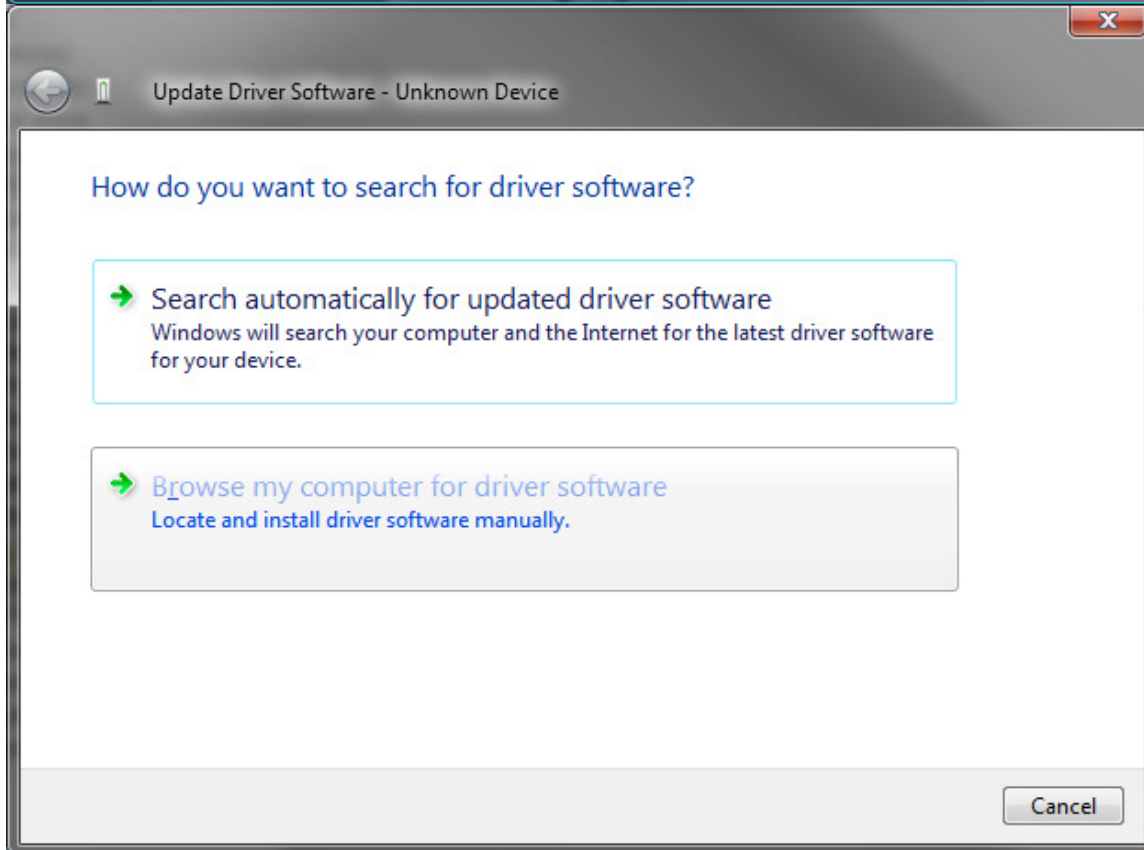
2. Switch to classic view and click on the device manager one.



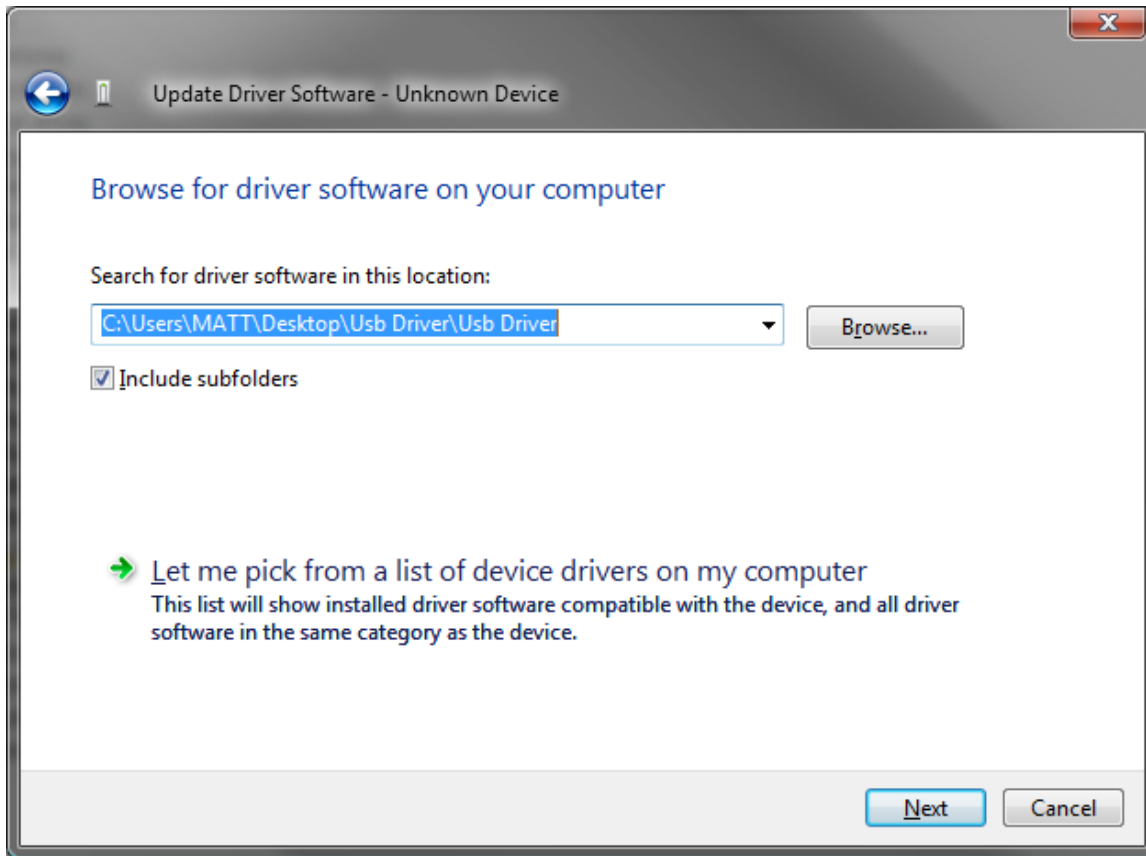
3. Locate the unknown device.



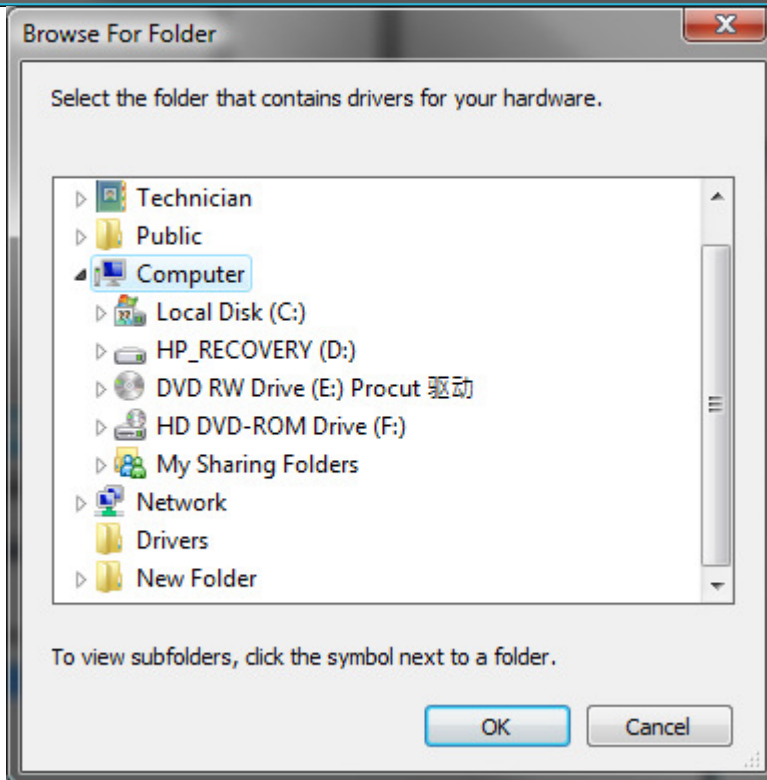
4. Right click on the unknown device and click on update driver.



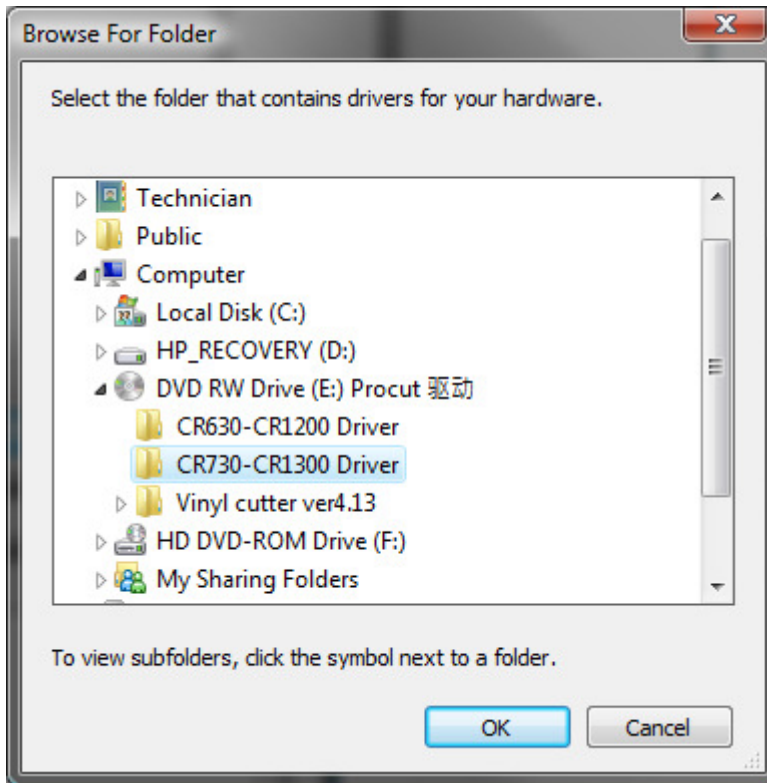
5. This screen click browses my computer for driver software.



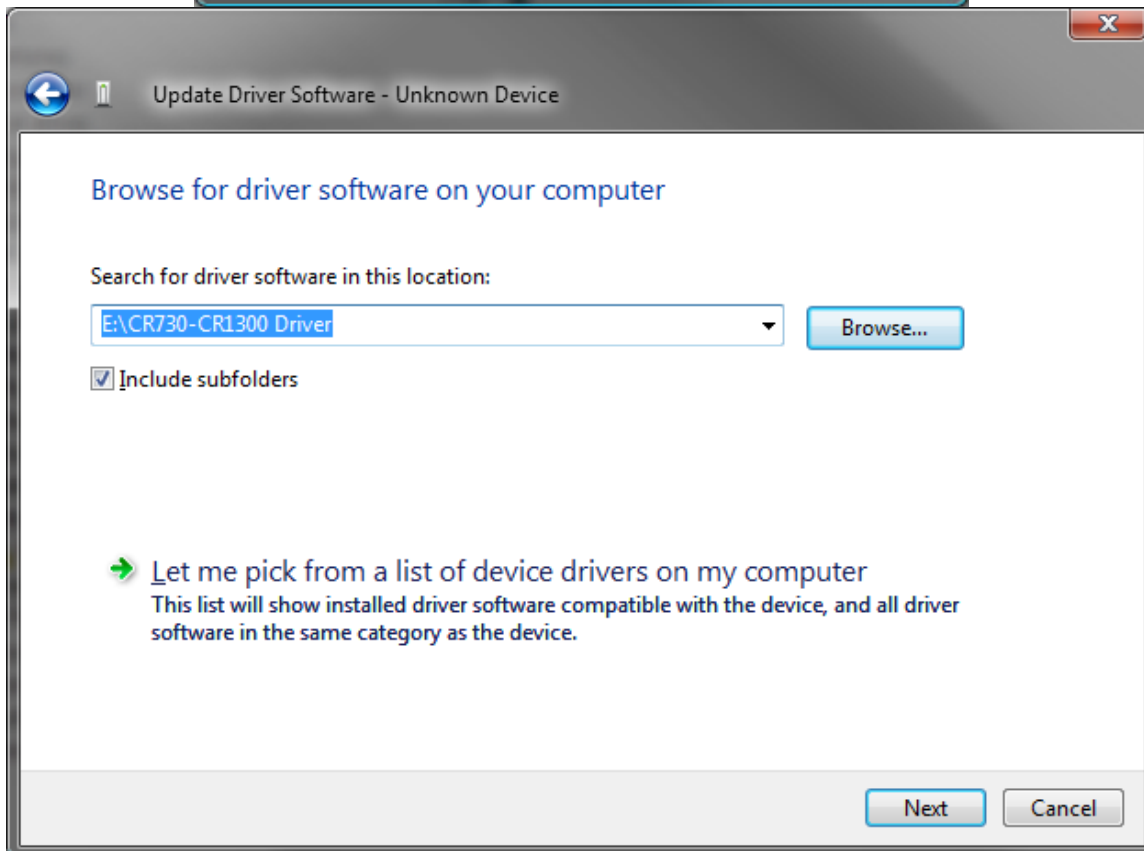
6. Click the browse button.



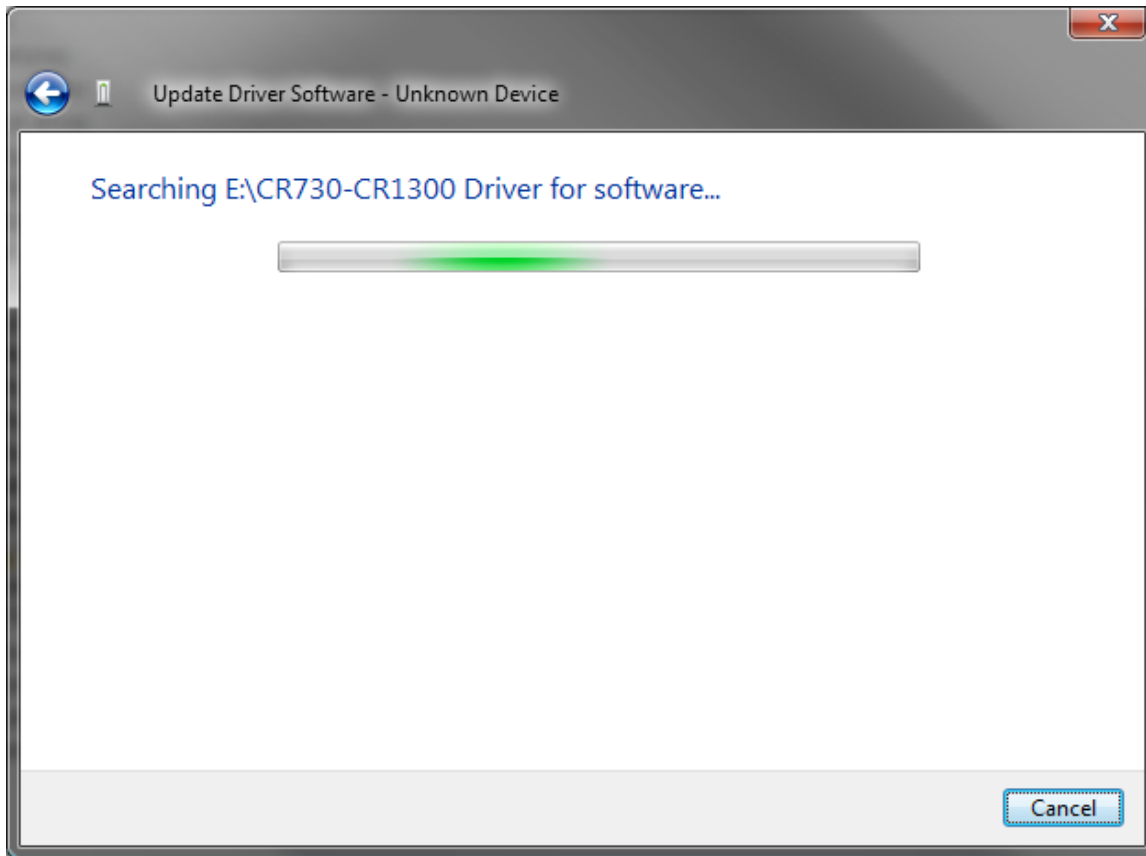
7. Click on computer and go to the d: drive



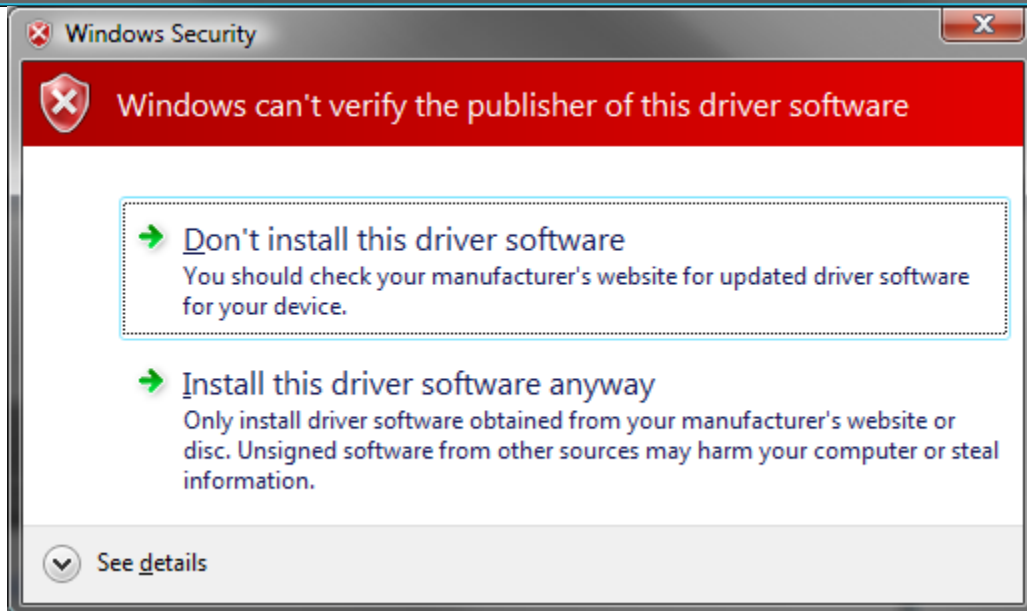
8. Find the CR730-CR1300 Folder.



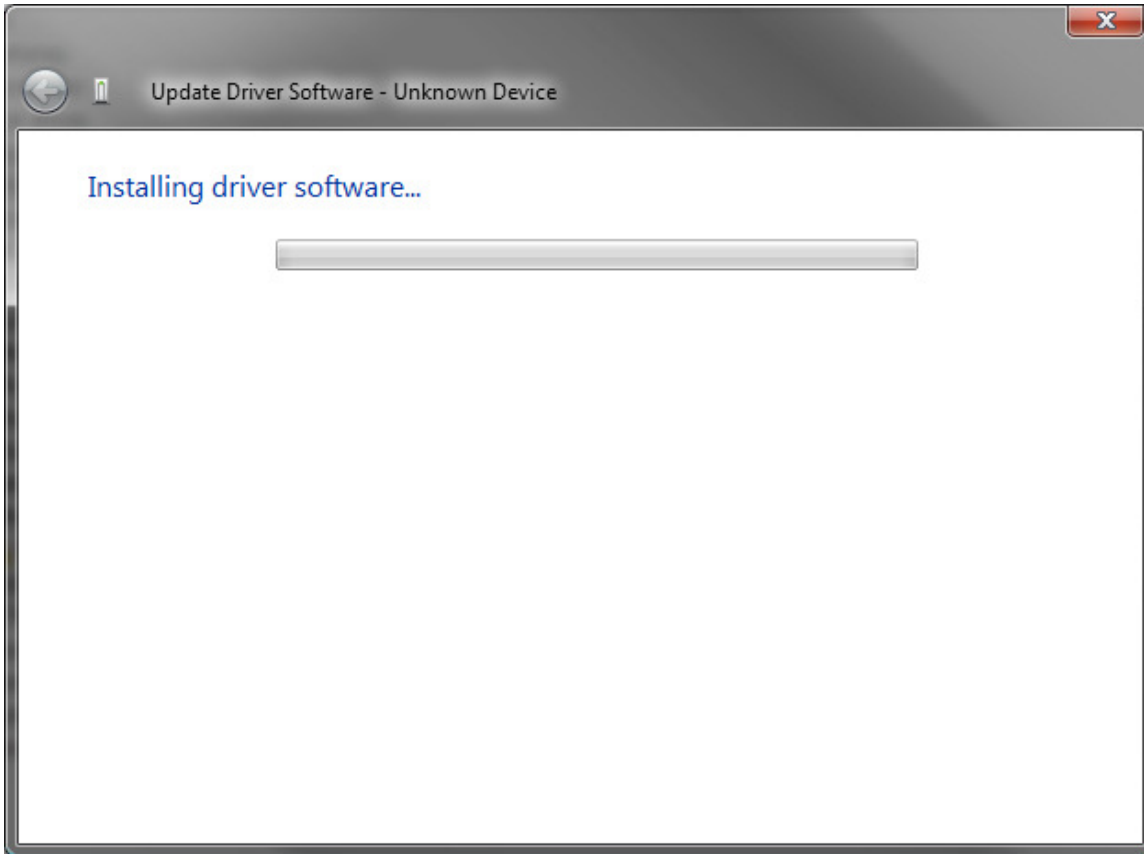
9. Notice the file extension is there under cr730. Click next to continue.



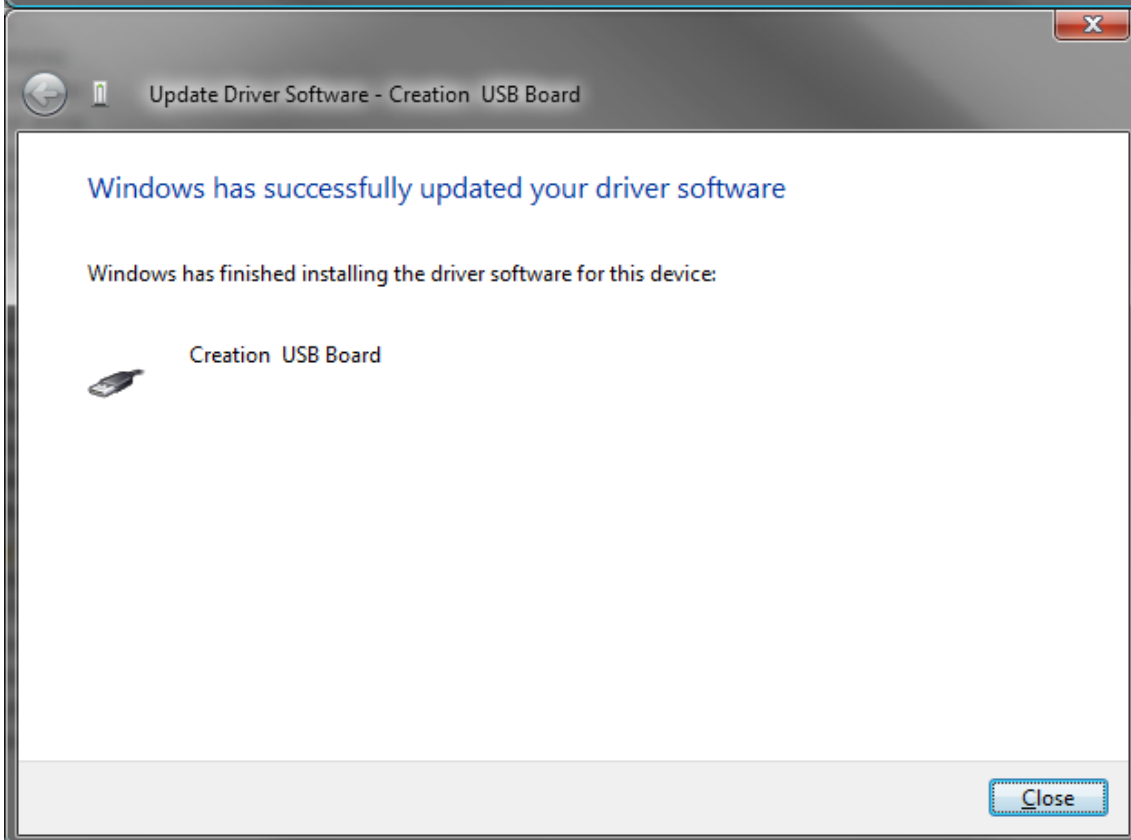
10. Notice that it is looking for the driver.



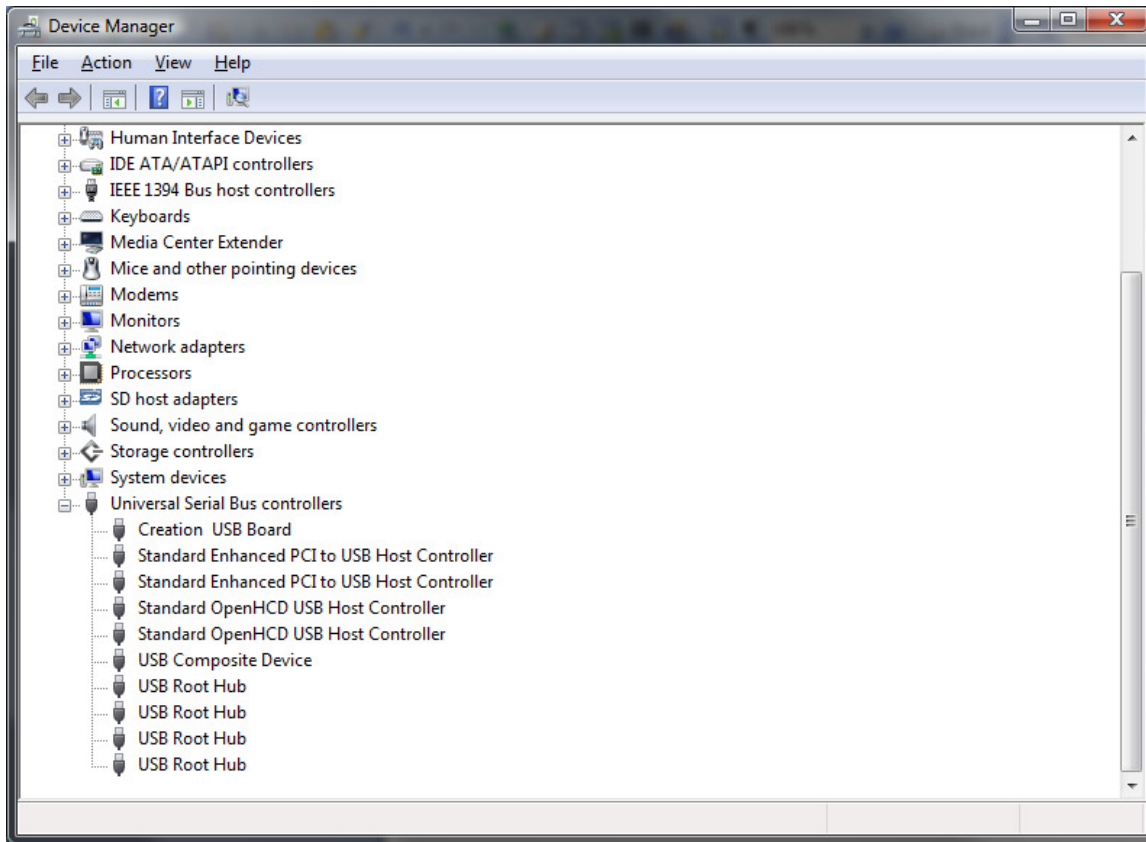
11. This screen is just a warning click install this driver to continue with install.



12. Continuing the driver install process



13. It has finished installing the device to your computer and notice the name of the device is creation usb board.



Notice under usb there is the creation usb board.

The CR-730 is now installed to the computer.