

# Blade Offset

# Table of Contents

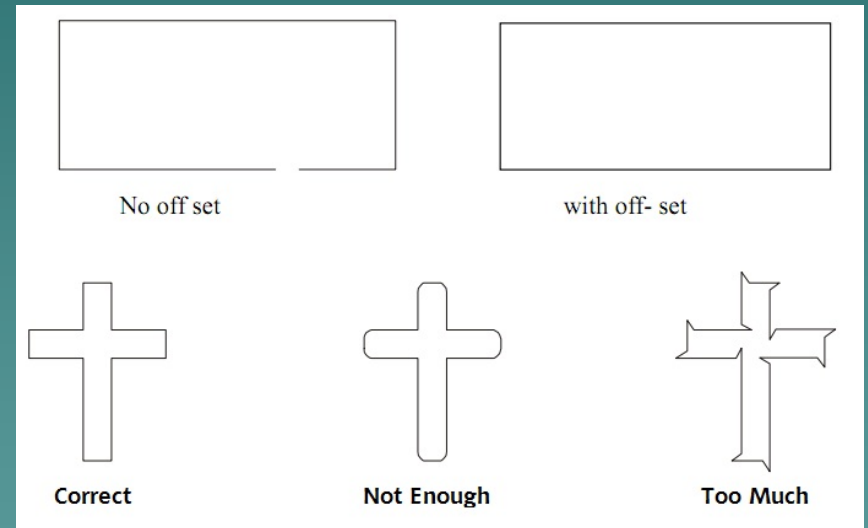
- ◆ 1. Blade Type
- ◆ 2. Signcut
- ◆ 3. Flexi

# 1-1 Blade Types

- ◆ Different degrees of blades require different offsets.
- ◆ 45° Blades typically use a .30 mm offset, (.0118 inches).
- ◆ 60° Blades use an offset higher than the 45°.
- ◆ In order to determine the correct offset, send the letters 'tow' in lowercase, 1 inch high to the cutter.

# 1-2 Blade Types

- ◆ Pay close attention to the detail of the corners.
- ◆ The letter 'o' should close entirely.
  - When weeded, there should not be any nicks or uncut edges on the letters.



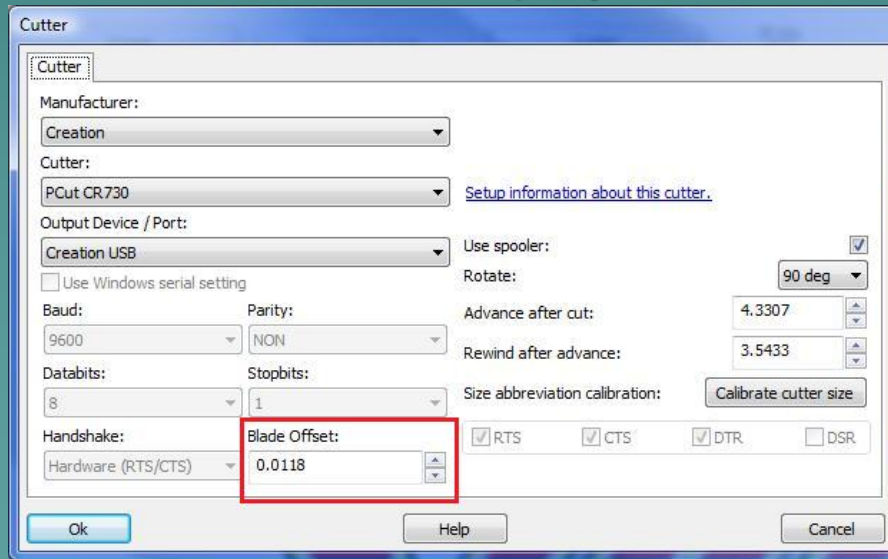
# 2-1 Signcut

- ◆ To adjust the blade offset in Signcut, click the 'Cutter' button on the top of the Signcut screen.

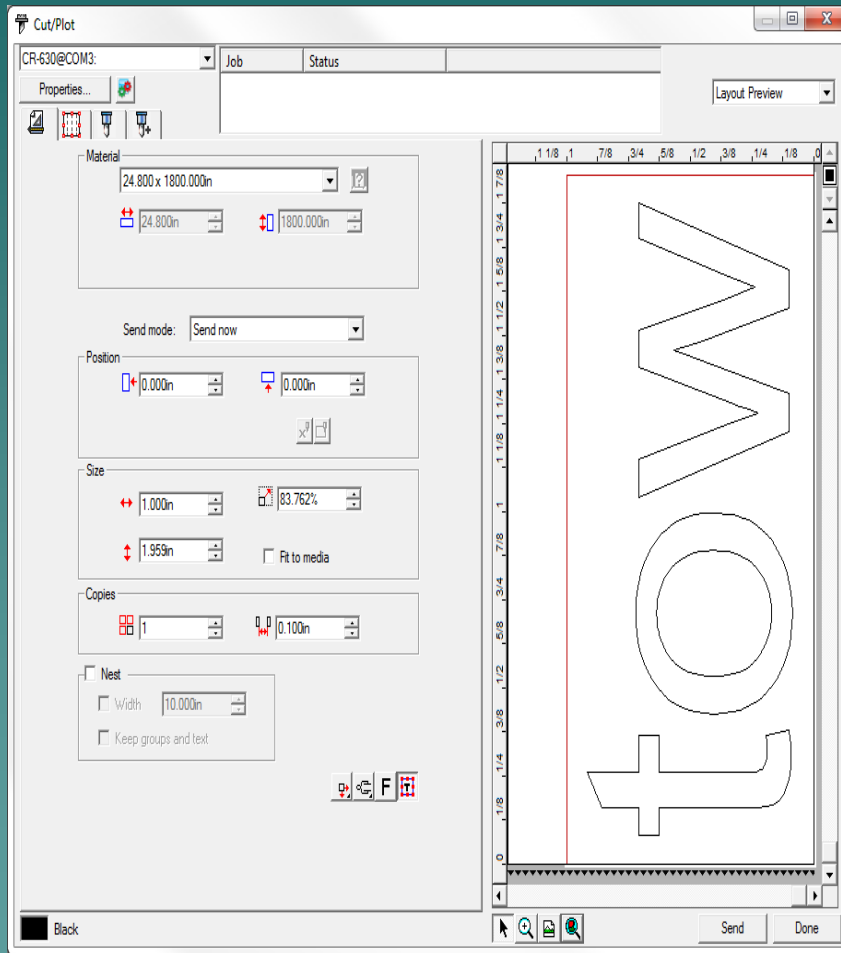


# 2-2 Signcut

- ◆ Signcut's default offset value is .0118 inches.
- ◆ To adjust this value, just click in the box and change the number.
- ◆ It is recommended this number be adjusted in small increments.
  - Ex. From .0118 to .0128 etc.
- ◆ This is not an exact science. If little results are being seen, raise this number by larger increments.
- ◆ Send a test cut to the cutter after every adjustment.

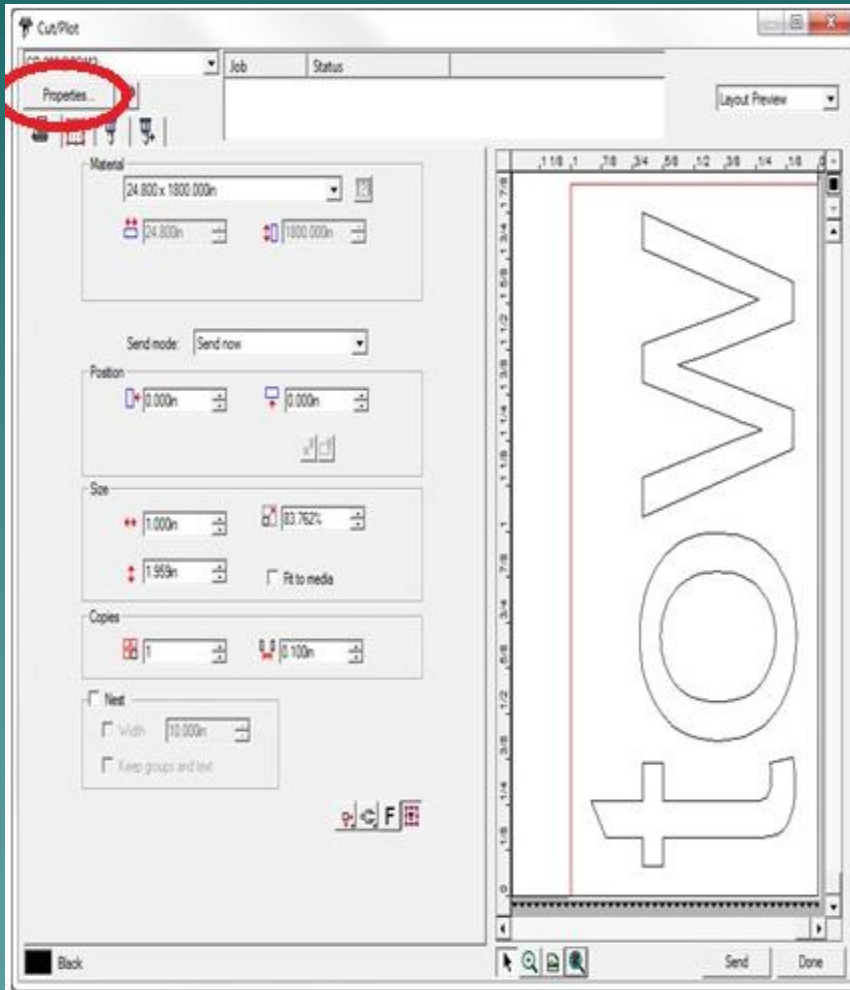


# 3-1 Flexi



- ◆ On Flexi, the offset settings are located in the Cut/Plot screen.

# 3-2 Flexi

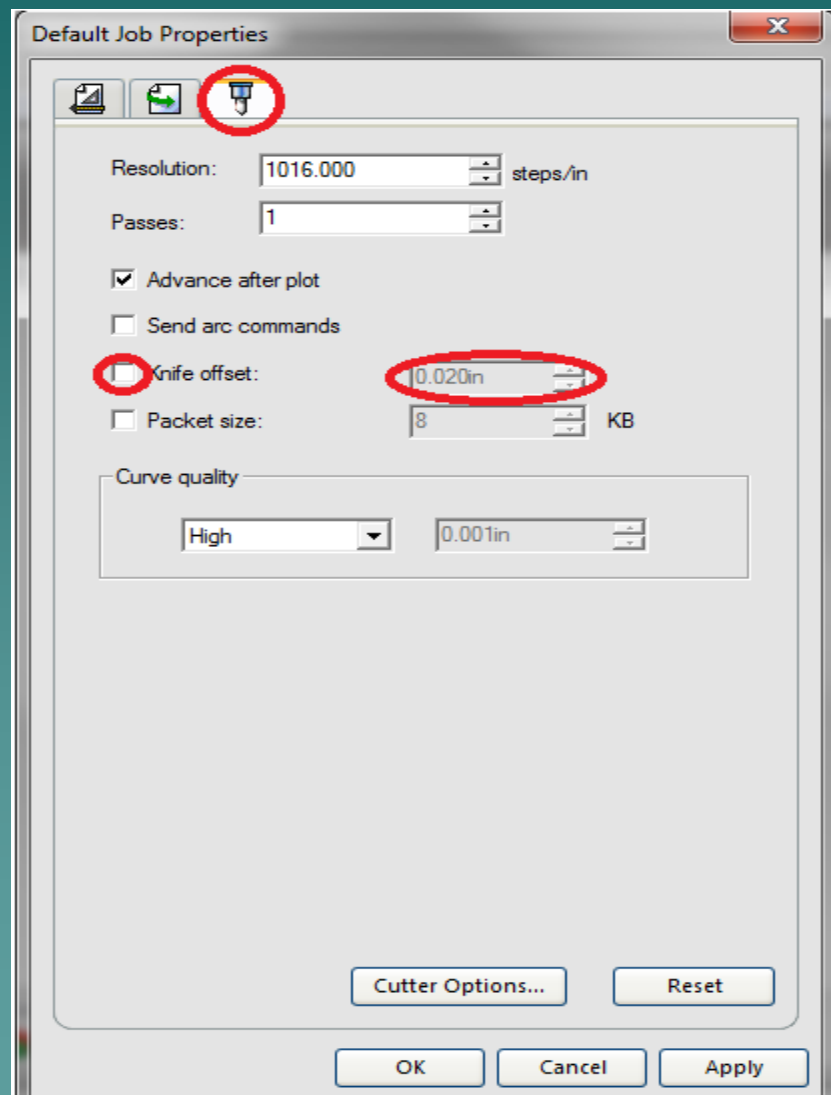


- ◆ Once on the Cut/Plot screen, click the Properties at the top.



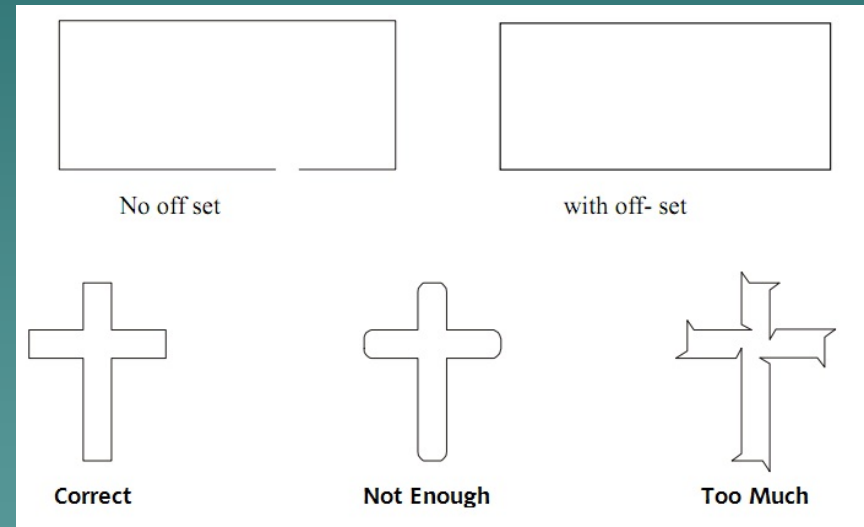
# 3-3 Flexi

- ◆ Default Job Properties window shows up.
- ◆ Click the last tab.
- ◆ Check the Knife offset, then adjust the number in thousandths of an inch.
  - Ex. .020 to .025 inches



# 3-4 Flexi

- ◆ Be sure to test with a cut to the cutter after each Overcut adjustment.
- ◆ The letters should have straight corners and the 'o' should be completely closed with no uncut areas.



# The End

Please review our tutorials for more information on particular features.

<http://www.cutterpros.com/downloads> for further information.

To speak with a technician, submit a ticket at <http://www.cutterpros.com/support/> or call 888-828-8776 x227

CutterPros.com/Hahn Ventures LLC is NOT liable for any software/attachments/instructions/download links/content contained in this presentation. Use the contents of this presentation AT YOUR OWN RISK. CutterPros.com/Hahn Ventures LLC is NOT responsible for any damages incurred to your computer hardware/software or any possible viruses/Trojans/malware or any other type of damaging programs that may be contained in the links and/or attachments. It is your responsibility to verify the contents before using any of the information contained in this presentation. By using the contents in this email you agree to hold CutterPros.com/Hahn Ventures LLC harmless of all liability and damages. You agree that you are totally responsible for what you put on your computer, software you install on your computer and files you download to your computer.