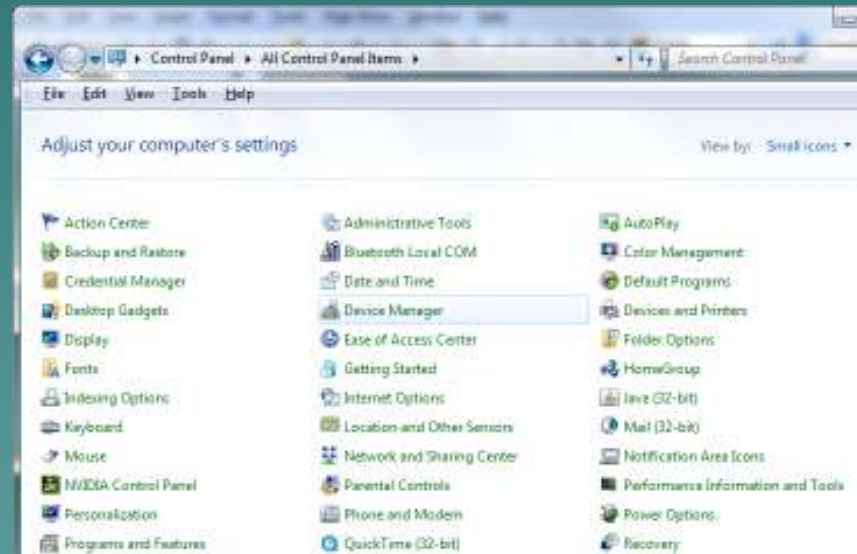


# Flexi Setup

For the CR630/CR1200

# 1-1 Device Manager

- ◆ Open the Device Manager by going to the Control Panel: Device Manager.
- ◆ For Windows XP, go to: Control Panel: System: Hardware: Device Manager
- ◆ The cutter should be plugged in and turned on during this process.

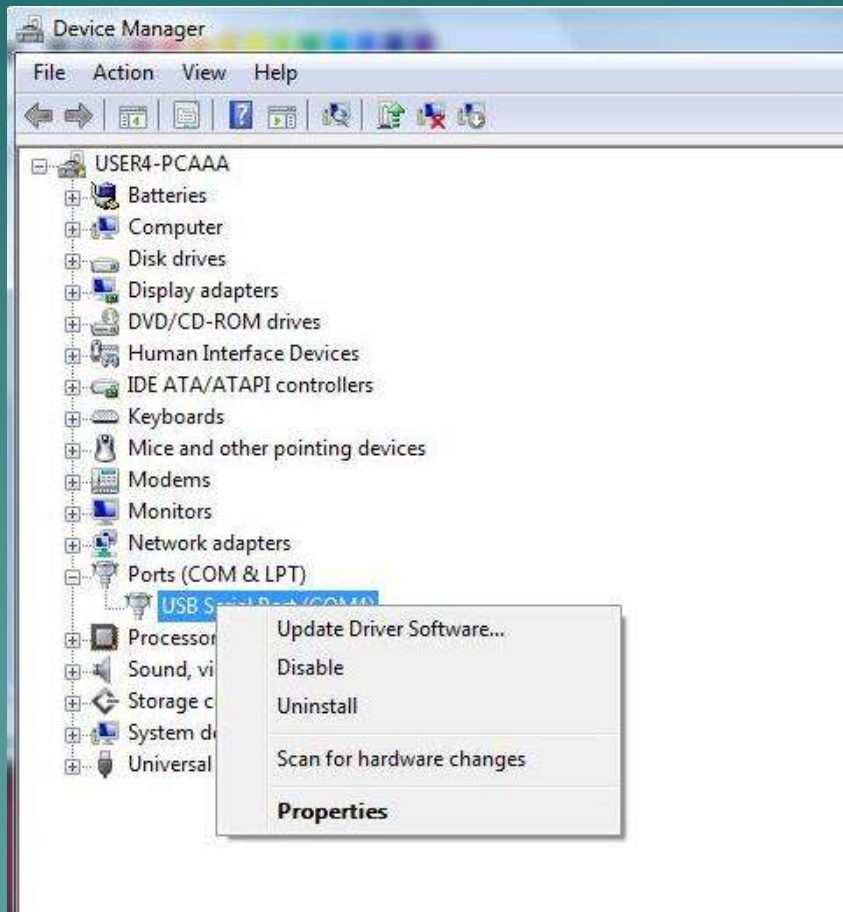


# 1-2 Device Manager

- ◆ Click on your USB connection under the Ports section.

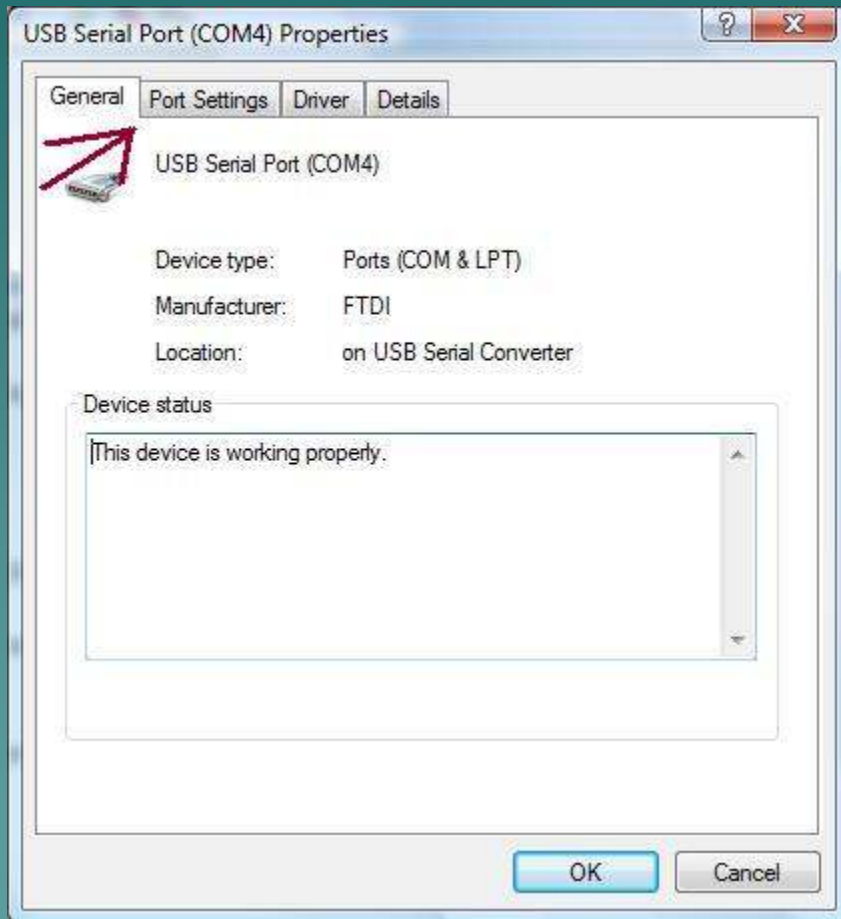


# 1-3 Device Manager



- ◆ Right-Click and select Properties

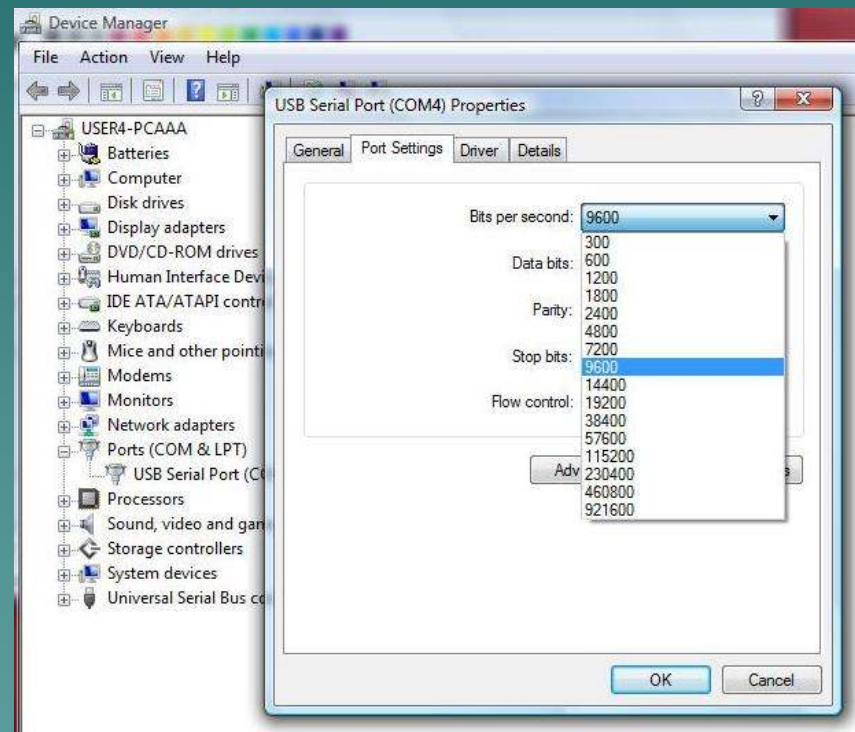
# 1-4 Device Manager



- ◆ Go to the Port Settings tab.

# 1-5 Device Manager

- ◆ Verify your baud rate is set to 4800, 9600, or 19200.
  - Whichever rate you choose, this same rate needs to be set in Flexi and on the cutter itself.
- ◆ Adjust the Flow Control to “Hardware” from this same screen.



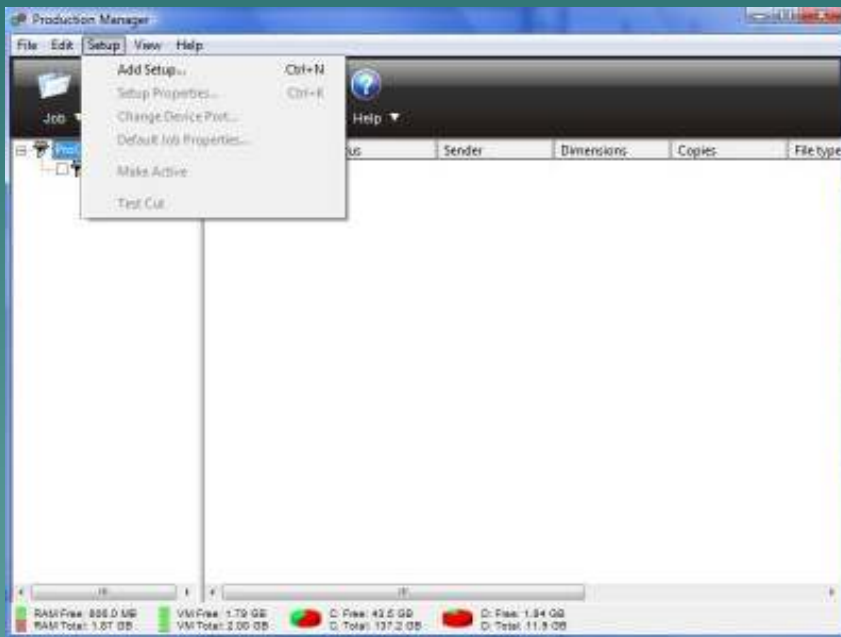
# 1-6 Device Manager

- ◆ If the COM number needs to be changed, click on the Advanced Settings button.
- ◆ Change the COM number on the top dropdown.
- ◆ Click OK when finished.



# 2-1 Flexi

- ◆ To add a new setup in Flexi, open the Production Manager.



- ◆ Go to Setup: Add Setup.



# 2-2 Flexi

The screenshot shows a dialog box titled "Add Setup" with a close button in the top right corner. Inside the dialog, there is a section titled "Choose a device". Below this title, there are two questions:

What is the brand name of your vinyl cutter?

ProCut

What is the model name of your ProCut?

CR-630

CR-1200

CR-1300

CR-1300F

CR-630

CR-730

CR-730F

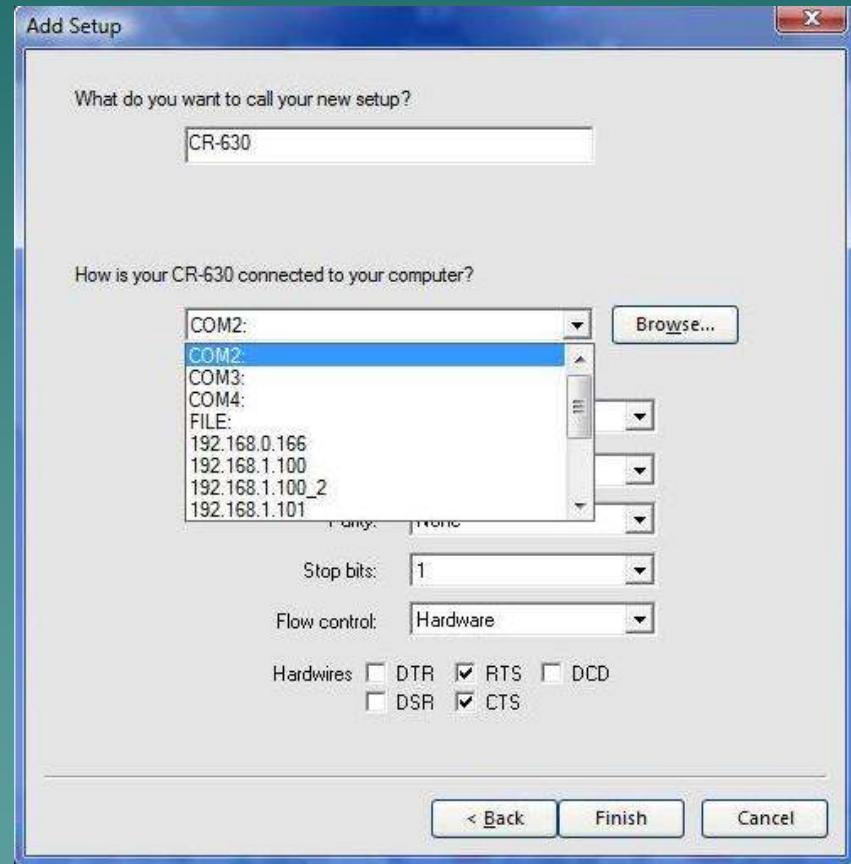
The "CR-630" option in the second dropdown menu is highlighted with a blue selection bar.

- ◆ Select the brand and Cutter Type.

The screenshot shows the same "Add Setup" dialog box. The first dropdown menu is still set to "ProCut". The second dropdown menu now shows "ProCut" as the selected option, highlighted with a blue selection bar. The rest of the dialog box is empty.

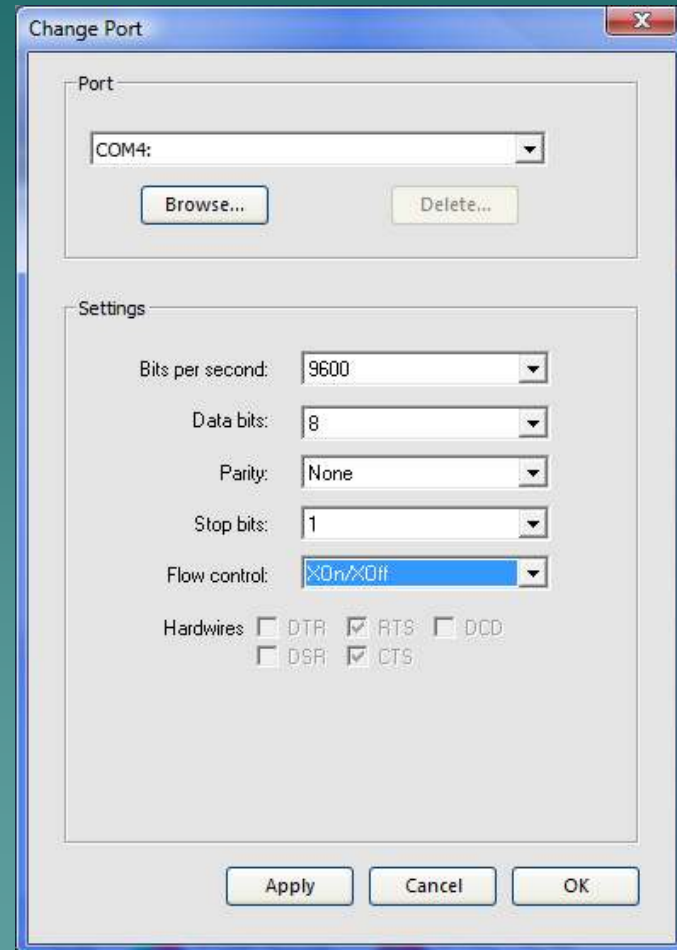
## 2-3 Flexi

- ◆ On the next page, select which COM port the cutter is connected to.
- ◆ This information is on the device manager.

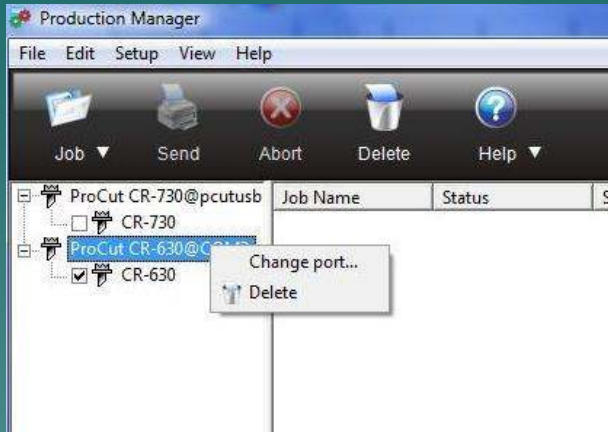


# 2-4 Flexi

- ◆ The Flow Control should be set to "XOn/XOff"
- ◆ Click Finish and you're done!



# 2-5 Flexi



- ◆ To change settings after the initial setup of the cutter:
- ◆ Go to the cutter in Production Manager, right click and select "Change Port".

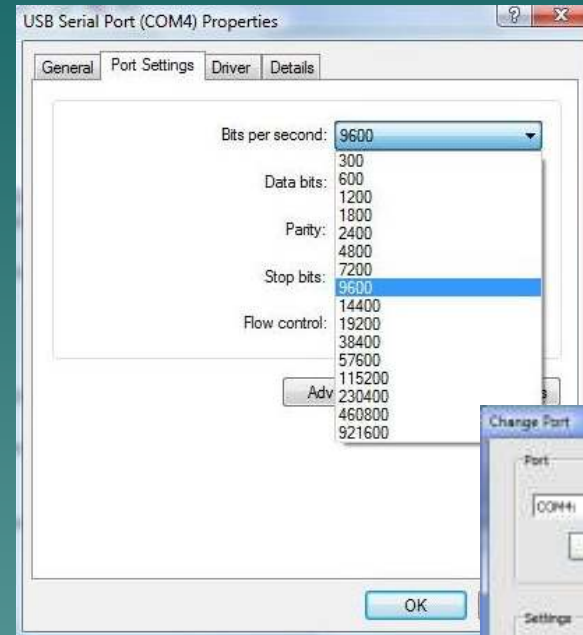


# 3-1 Cutter

- ◆ To check the cutter's baud rate when online:
- ◆ Click the "Online" button.
- ◆ Click "Mode" until you get to the screen that reads 'Baud'.
- ◆ To change this setting, hit the "+" and "-" buttons.
- ◆ Click "Mode" to get back to the main screen, then "Online" to get back online.



# 4-1 BAUD



- ◆ The Baud rate is the rate of transfer of information from the computer to the cutter. This number must match in 3 places in order for information to be processed correctly.
- ◆ 1. In the cutter as previously described.
- ◆ 2. In the Device Manager (Listed as "Bits per second")
- ◆ 3. In Flexi ( Listed as "Bits per second")

# The End

CutterPros does not support Flexi in any way beyond initial setup. Please review the Flexi Help for more information.

<http://www.cutterpros.com/downloads> for further information.

To speak with a technician, submit a ticket at  
<http://www.cutterpros.com/support/> or call 888-828-8776 x227

CutterPros.com/Hahn Ventures LLC is NOT liable for any software/attachments/instructions/download links/content contained in this presentation. Use the contents of this presentation AT YOUR OWN RISK. CutterPros.com/Hahn Ventures LLC is NOT responsible for any damages incurred to your computer hardware/software or any possible viruses/Trojans/malware or any other type of damaging programs that may be contained in the links and/or attachments. It is your responsibility to verify the contents before using any of the information contained in this presentation. By using the contents in this email you agree to hold CutterPros.com/Hahn Ventures LLC harmless of all liability and damages. You agree that you are totally responsible for what you put on your computer, software you install on your computer and files you download to your computer.

**CUTTERPROS.COM**