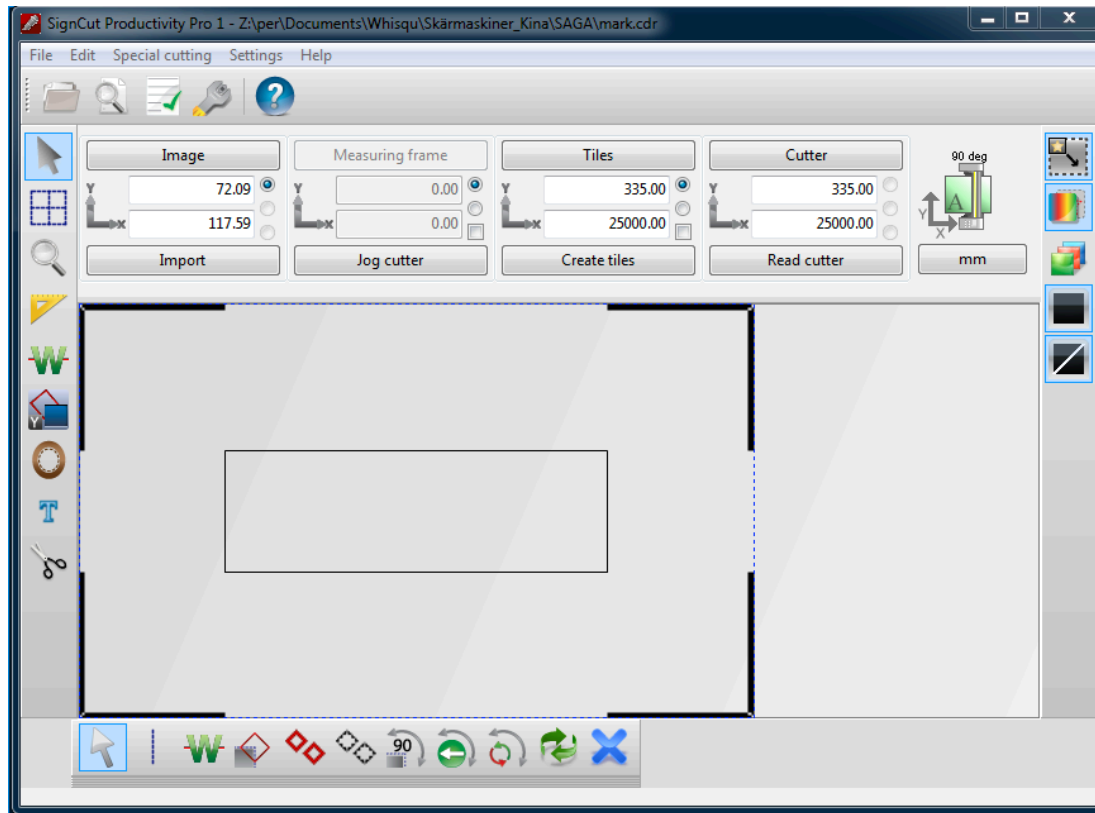
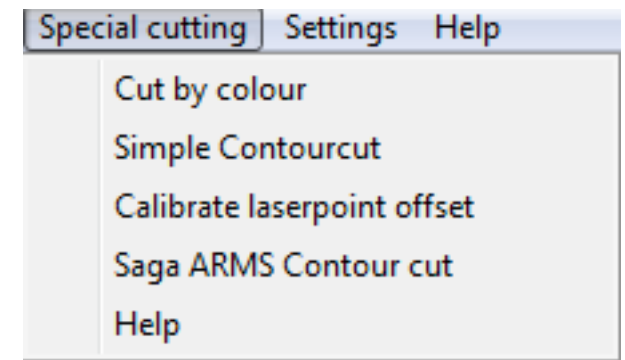


Saga ARMS - Contourcutting with SignCut!

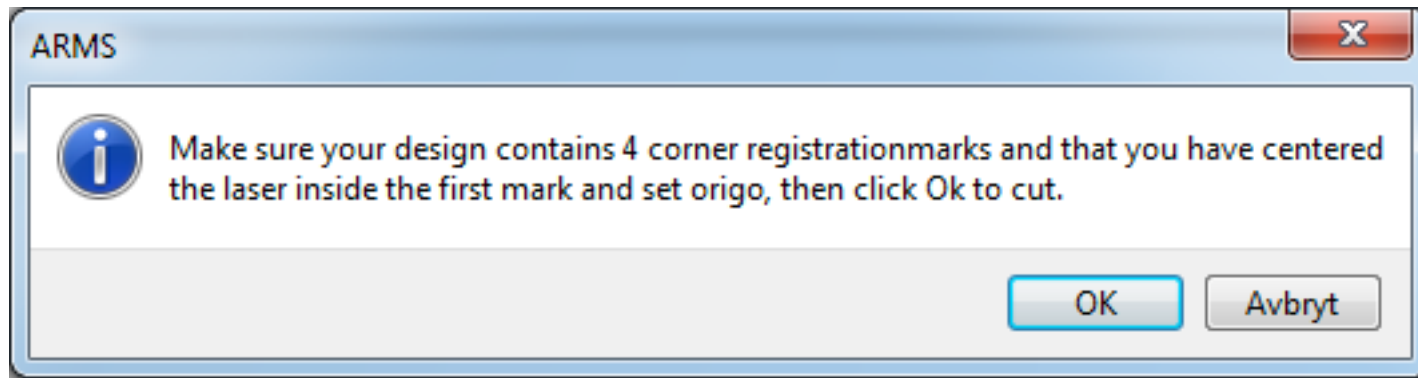
1. First load your image into SignCut with the surrounding corner registrationmarks of size 25 x 25 mm.



2. Go to the "Special Cutting menu" and choose "Saga ARMS Contour cut" from the menu.



3. Confirm that everything is setup properly according to the dialog information and click Ok to start contourcutting.



4. Done!