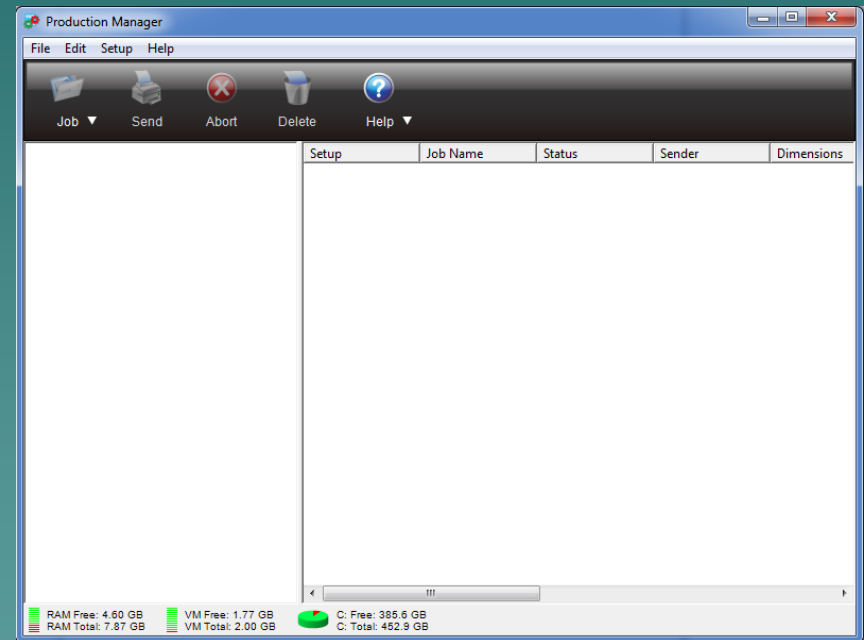


Flexi Setup

For the Contour and Servo

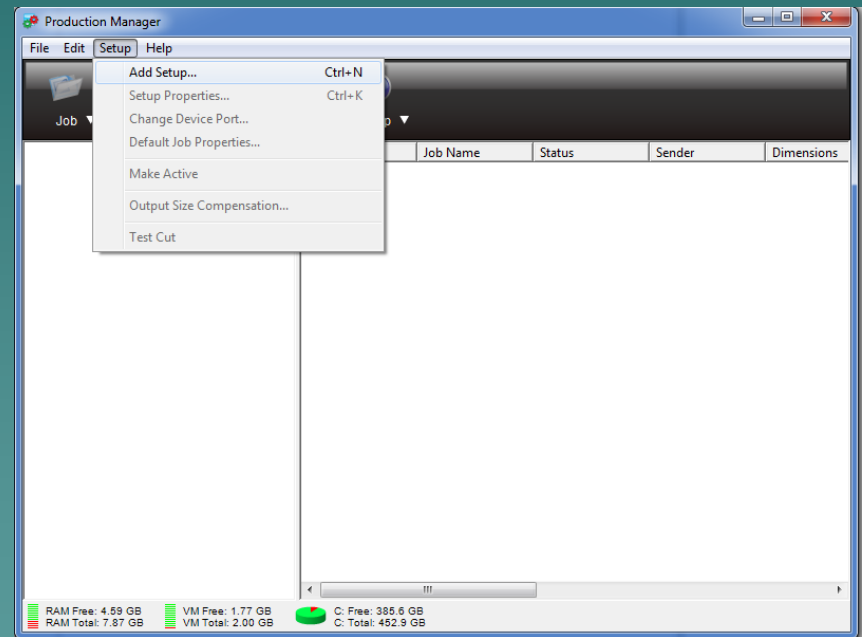
1-1 Flexi Starter

- ◆ Open the Production Manager for Flexi Starter.
- ◆ The cutter should be plugged in and turned on during this process.
- ◆ You should also have the printer installed for the cutter.



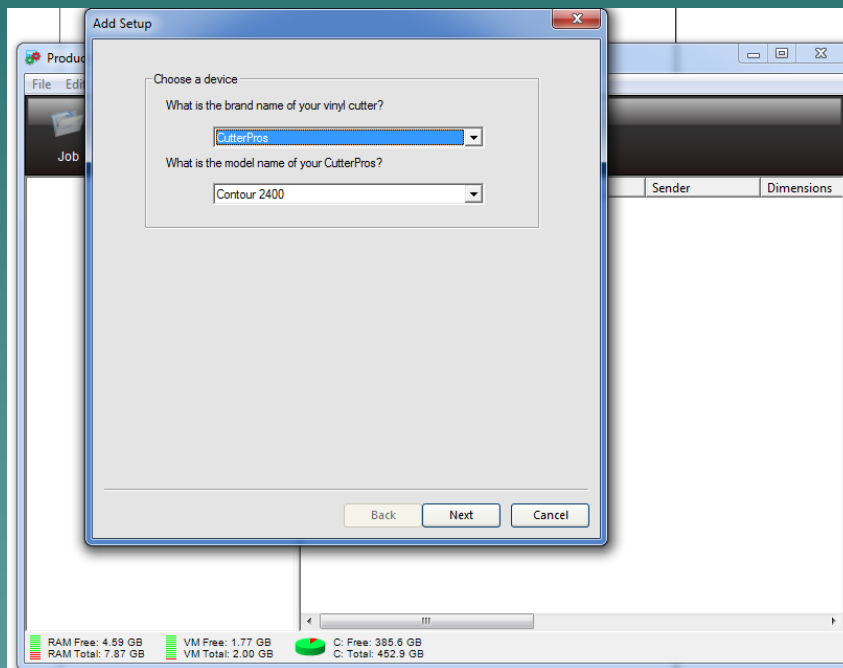
1-2 Flexi Starter

- ◆ Click Setup, then Add Setup...



1-3 Flexi Starter

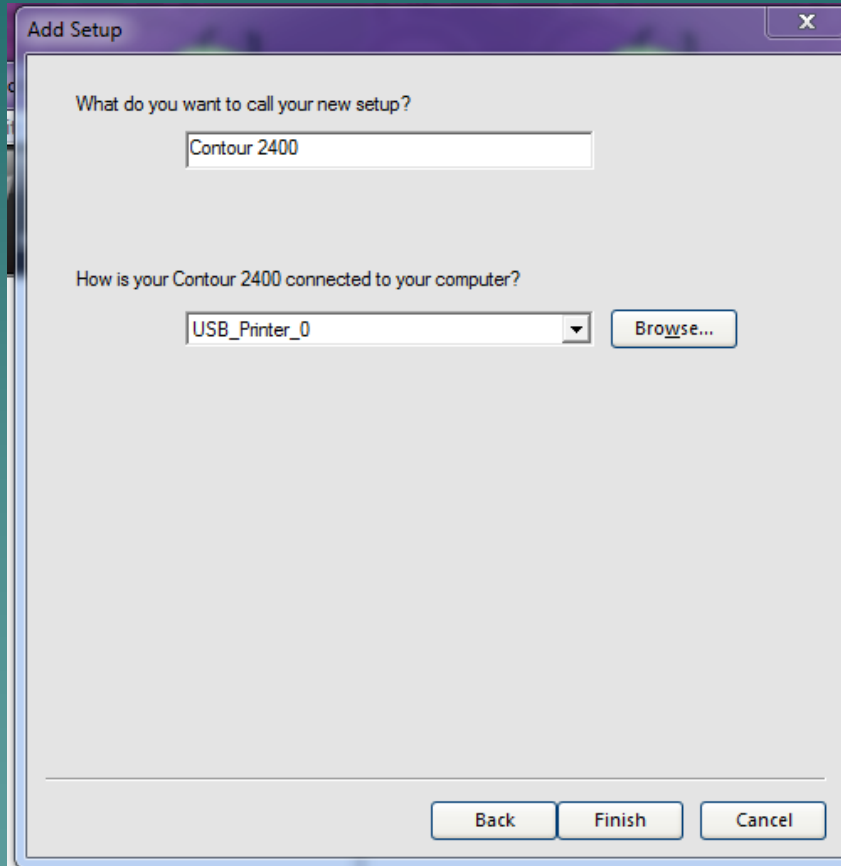
- ◆ Select CutterPros as the brand.



- ◆ Select either the Contour 2400 or Contour 4800 for the model. For Servo 2400 choose Contour 2400, For Servo 4800, choose Contour 4800.

- ◆ Click Next

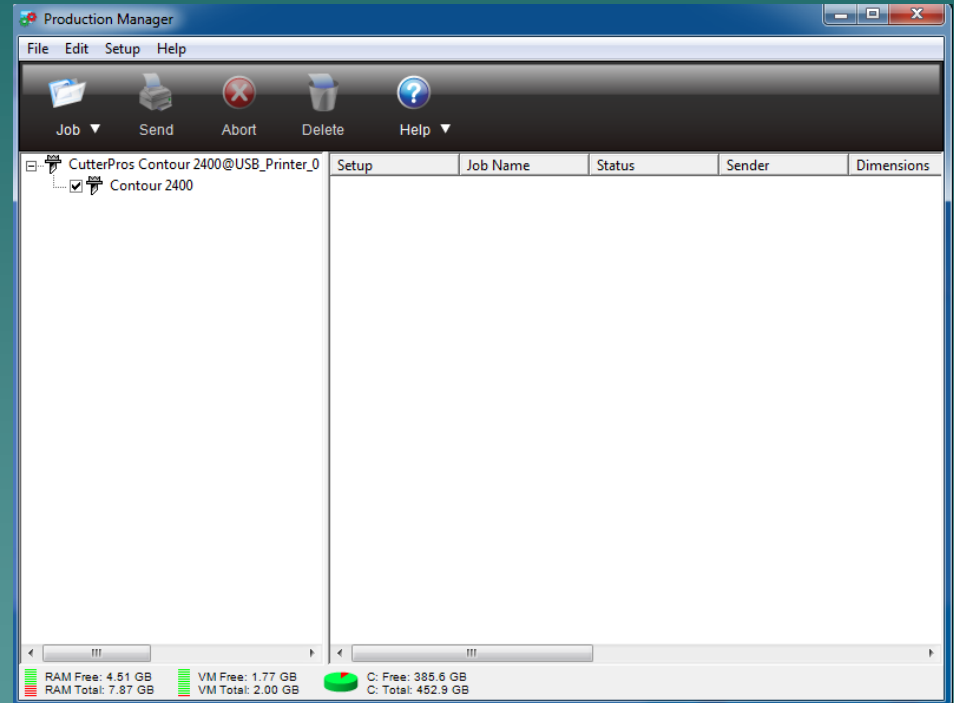
1-4 Flexi Starter



- ◆ Select the USB_Printer_0 as the connection.
- ◆ Click Finish

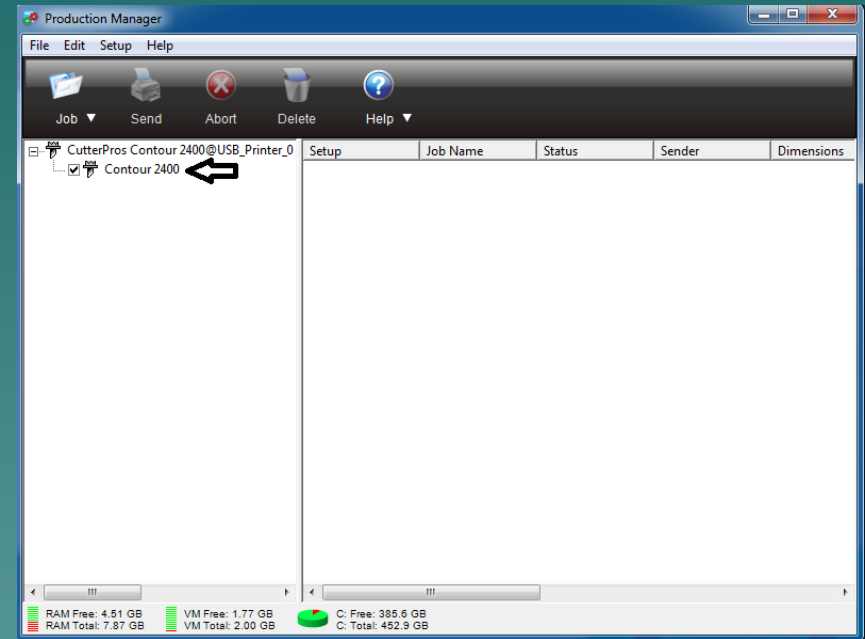
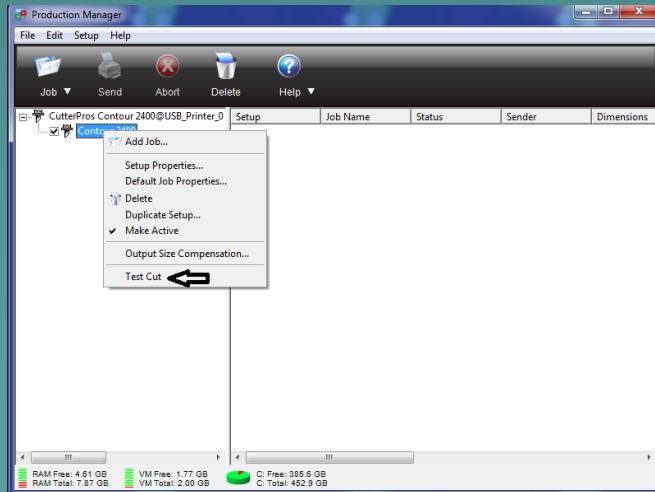
1-5 Production Manager

- ◆ The cutter should now be setup in the Production Manager.



1-6 Flexi Starter

- ◆ You can right click on the Contour/Servo 2400 (or 4800) to test the setup.



The End

CutterPros does not support Flexi in any way beyond initial setup. Please review the Flexi Help for more information.

<http://www.cutterpros.com/downloads> for further information.

To speak with a technician, submit a ticket at
<http://www.cutterpros.com/support/> or call 888-828-8776 x227

CutterPros.com/Hahn Ventures LLC is NOT liable for any software/attachments/instructions/download links/content contained in this presentation. Use the contents of this presentation AT YOUR OWN RISK. CutterPros.com/Hahn Ventures LLC is NOT responsible for any damages incurred to your computer hardware/software or any possible viruses/Trojans/malware or any other type of damaging programs that may be contained in the links and/or attachments. It is your responsibility to verify the contents before using any of the information contained in this presentation. By using the contents in this email you agree to hold CutterPros.com/Hahn Ventures LLC harmless of all liability and damages. You agree that you are totally responsible for what you put on your computer, software you install on your computer and files you download to your computer.