

Saga Setup on the Computer

Contour and Servo
2400 and 4800

1-1 Computer Setup

- ◆ Plug in the USB cable to a USB port on the computer.
- ◆ Move the power switch to the “|” position to turn it on.



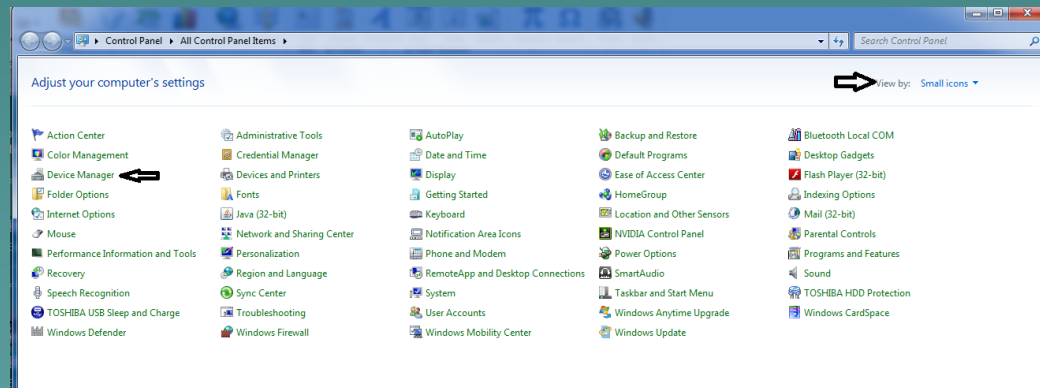
1-2 Computer Setup



- ◆ The cutter will go through a short memory test, then display the speed and force on the screen.

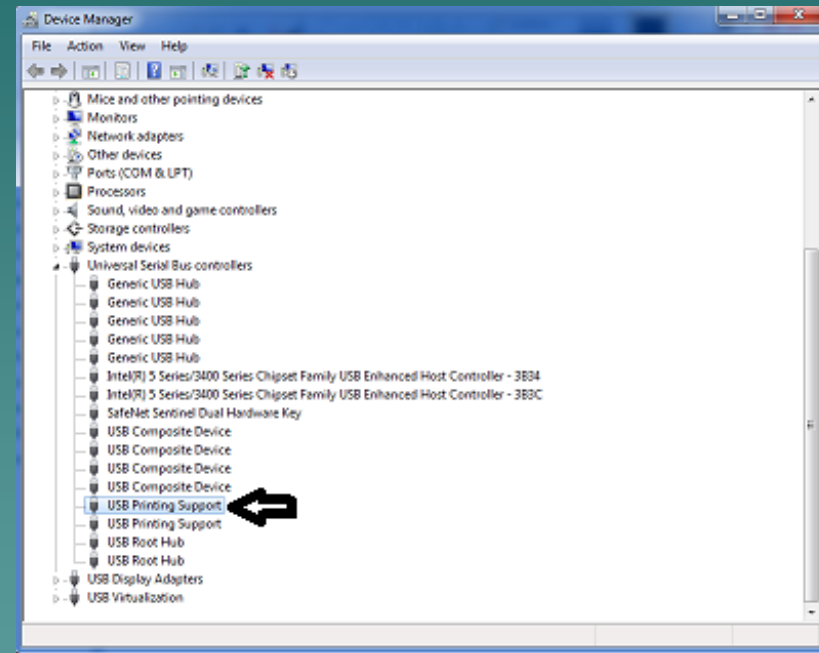
1-3 Computer Setup

- ◆ Open the Device Manager on the computer.
- ◆ Go to the Control Panel (you may need to switch the view to see the Device Manager). In Windows XP the Device Manager is in the System under the Hardware tab



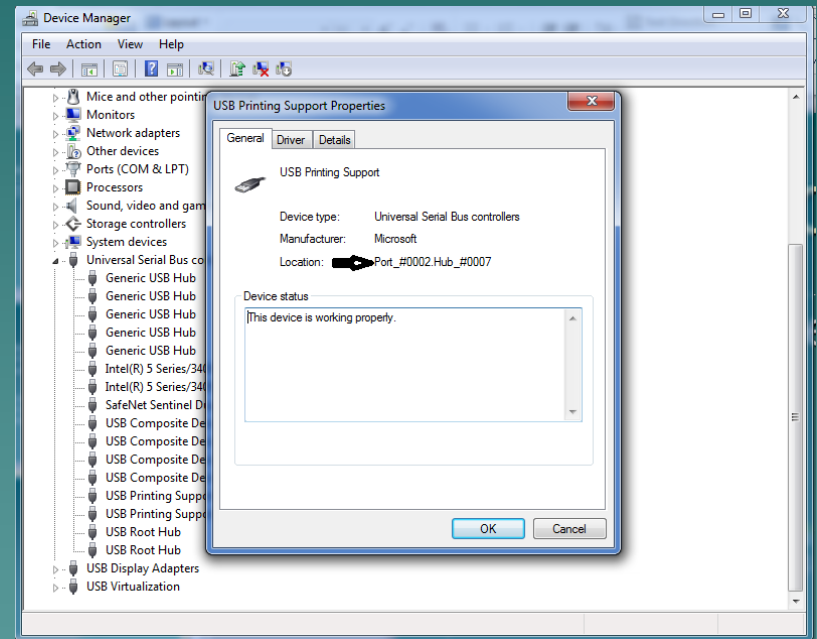
1-4 Computer Setup

- ◆ Locate the universal serial bus controllers.
- ◆ The cutter will be listed as 'USB Printing Support'.



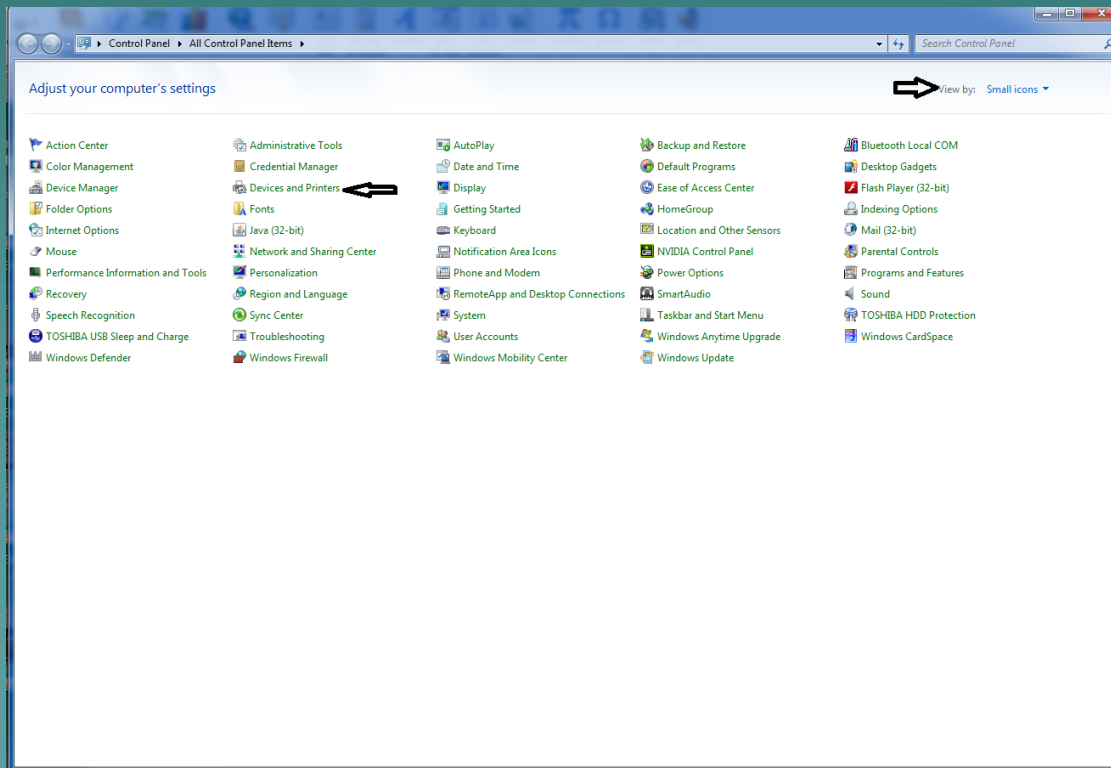
1-6 Computer Setup

- ◆ Double click on the USB Printing Support
- ◆ It will show which port the cutter is connected to.



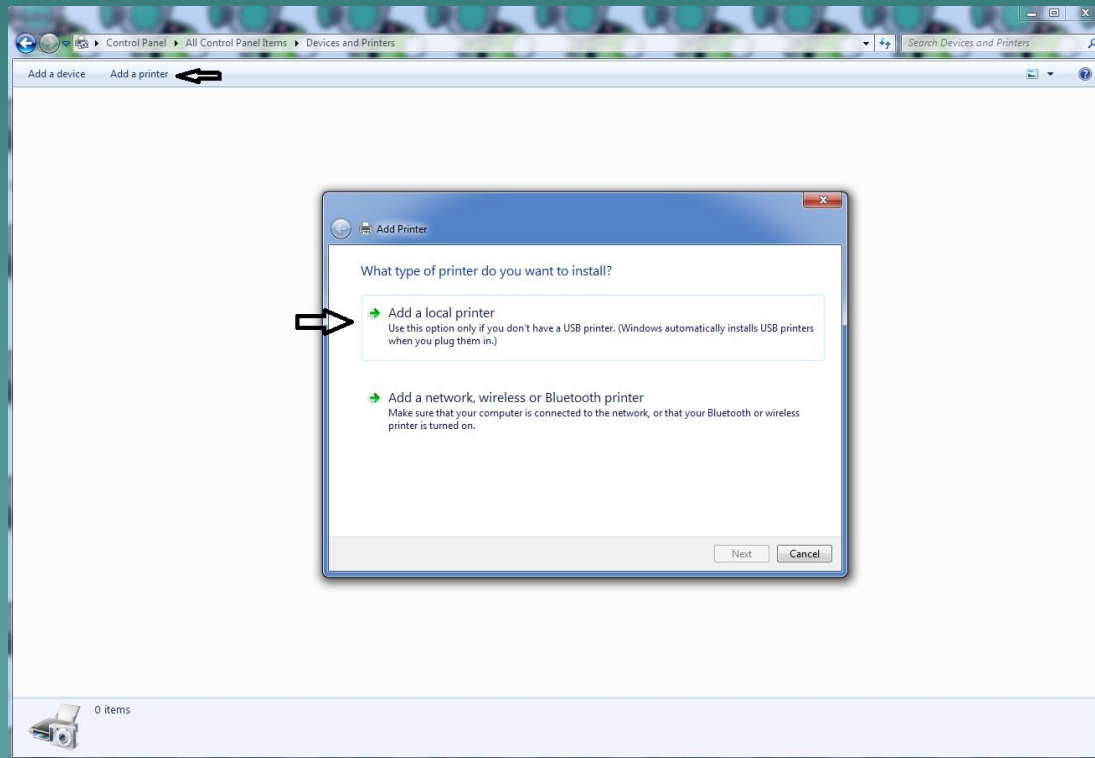
1-7 Computer Setup

- ◆ Open the Printers option in the Control Panel



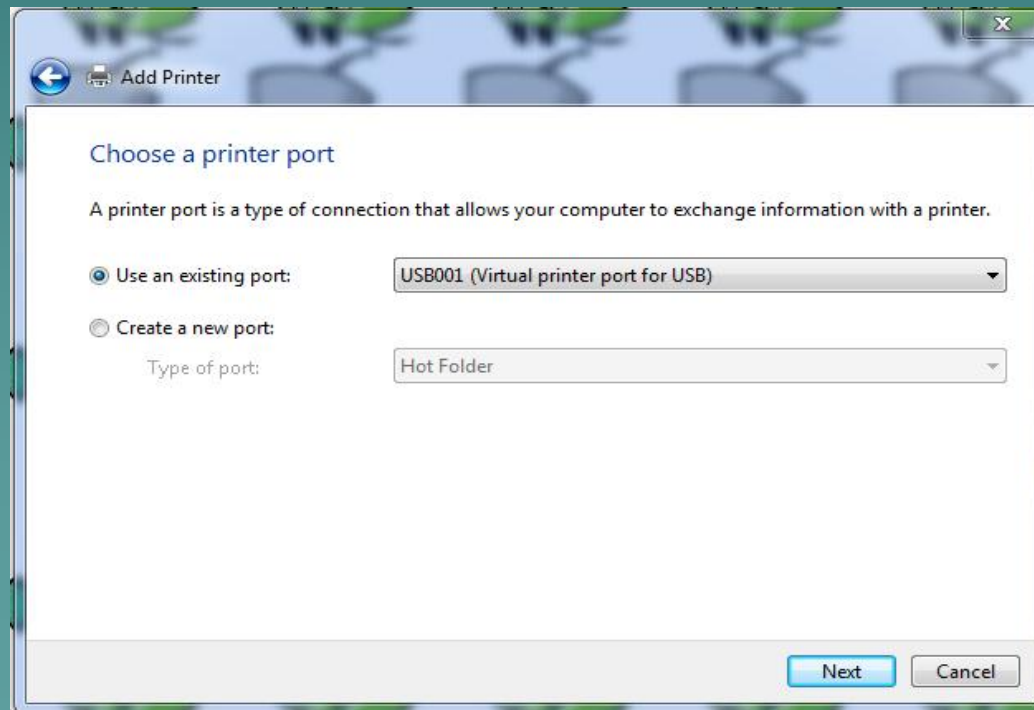
1-8 Computer Setup

- ◆ Select 'Add a Printer'
- ◆ Then add a local printer.



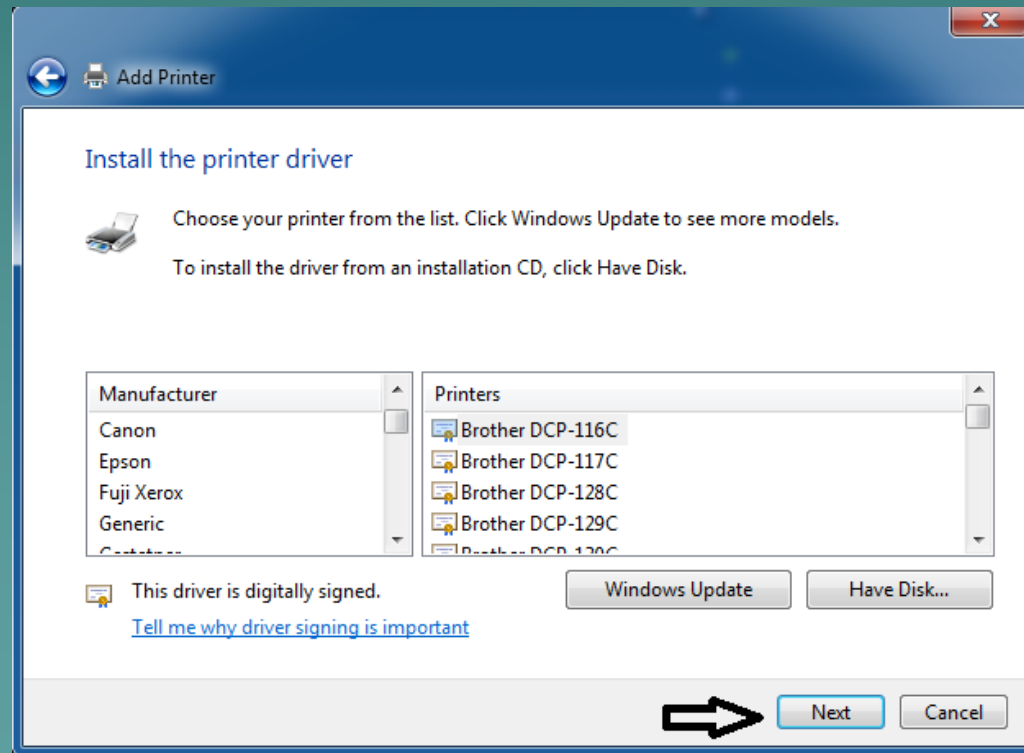
1-9 Computer Setup

- ◆ Select the correct USB port the cutter is connected to.
- ◆ Click Next



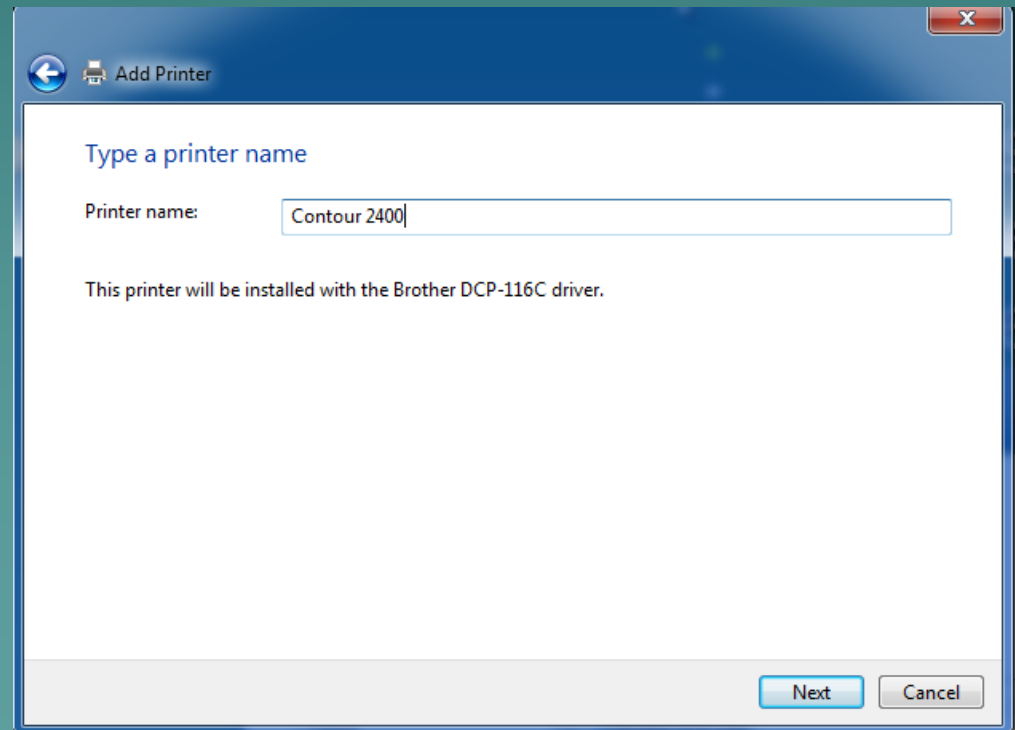
1-10 Computer Setup

- ◆ Click Next. It is not necessary to choose a printer. The driver is installed for the cutter already.



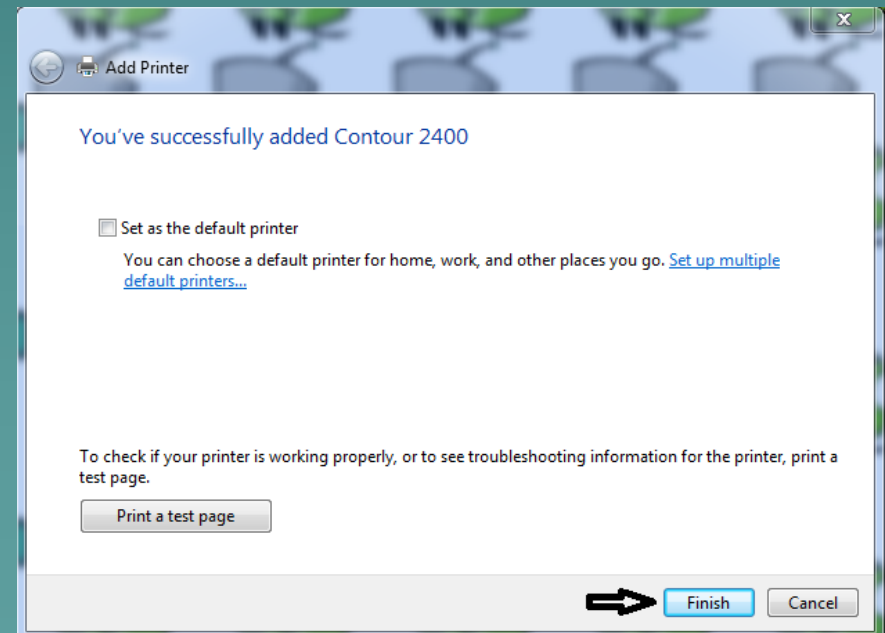
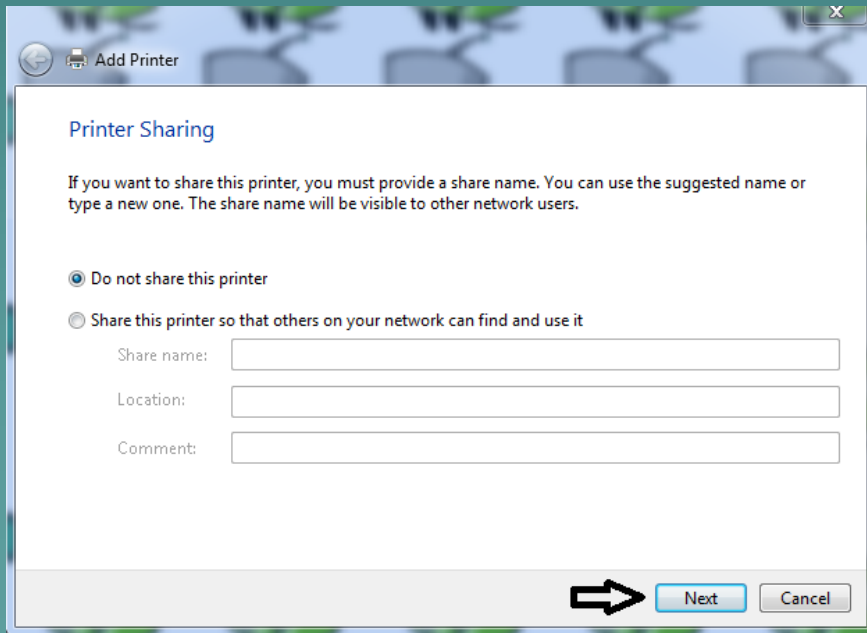
1-11 Computer Setup

- ◆ Rename the printer as the cutter you have. Contour 2400, Contour 4800, Servo 2400, or Servo 4800. Click Next.



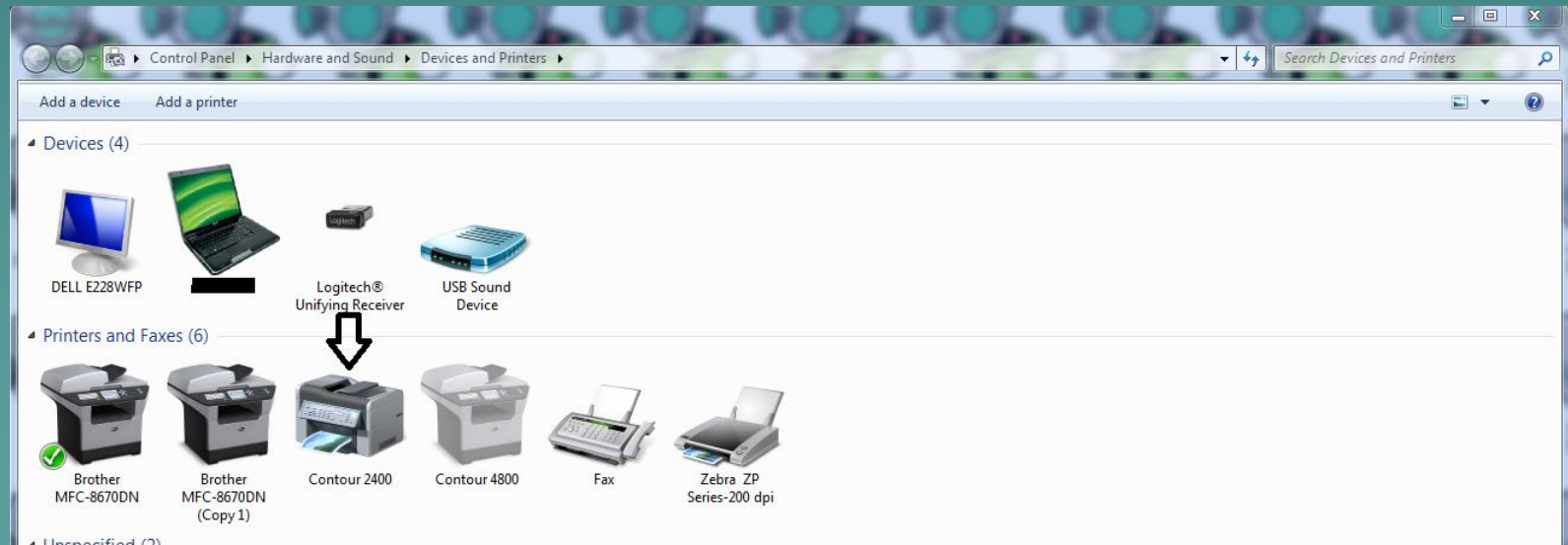
1-12 Computer Setup

- ◆ Choose Do not share this printer. Click next.
- ◆ Uncheck 'set as default printer' if checked. Click Finish.



1-13 Computer Setup

- ◆ The cutter will now show up in with the Printers.



1-14 Computer Setup

- ◆ Follow the tutorials on our help page to setup SignCut or Flexi Starter.
- ◆ SignCut – Letter E, number 4
- ◆ Flexi – Letter E, number 9

The End

Please review our tutorials for more information on particular features.

<http://www.cutterpros.com/downloads> for further information.

To speak with a technician, submit a ticket at <http://www.cutterpros.com/support/> or call 888-828-8776 x227

CutterPros.com/Hahn Ventures LLC is NOT liable for any software/attachments/instructions/download links/content contained in this presentation. Use the contents of this presentation AT YOUR OWN RISK. CutterPros.com/Hahn Ventures LLC is NOT responsible for any damages incurred to your computer hardware/software or any possible viruses/Trojans/malware or any other type of damaging programs that may be contained in the links and/or attachments. It is your responsibility to verify the contents before using any of the information contained in this presentation. By using the contents in this email you agree to hold CutterPros.com/Hahn Ventures LLC harmless of all liability and damages. You agree that you are totally responsible for what you put on your computer, software you install on your computer and files you download to your computer.