

Signcut Productivity Pro

Getting Started

Contents

- ◆ 1. Registering and Installing
- ◆ 2. Basic Features & Layout
- ◆ 3. Finding License Key
- ◆ 4. Finding Tutorials
- ◆ 5. Cutter Setup
- ◆ 6. X,Y Layout
- ◆ 7. Unit of Measurement
- ◆ 8. Image Size
- ◆ 9. Vinyl Size
- ◆ 10. Layering Tools
- ◆ 11. Tiling
- ◆ 12. Cut Out Screen

1-1: Registering & Installing

- ◆ To register Signcut, refer to the Signcut registration sheet attached to your invoice.
- ◆ This page is printed in black and white on colored paper which is attached to the invoice.

Whisper Asia Ltd
HongKong

SignCut

Productivity Pro

Document of value

Code Listed Here
Bundle Registration Code

Congratulations to this 1 year subscription of SignCut Productivity Pro included for free with your plotter!
To download it, please follow the description ...

1. Open your WEB-browser and enter:
<http://www.signcutpro.com/bundle.html>
2. Register!
Please fill in all required information! A correct email address is a demand for your management of the license!
3. Read the online info or open the e-mail!
It contains your license and a download link.
4. Download and install SignCut.
If you already have an older sub.revision running then close it, else the installation stops!
5. Open SignCut
6. Enter your license.
If a previous license is shown then replace it with your new license!
It is possible to switch license at any time, under HELP!
7. As long as the title bar do not prompt **test mode** the activation was successful!

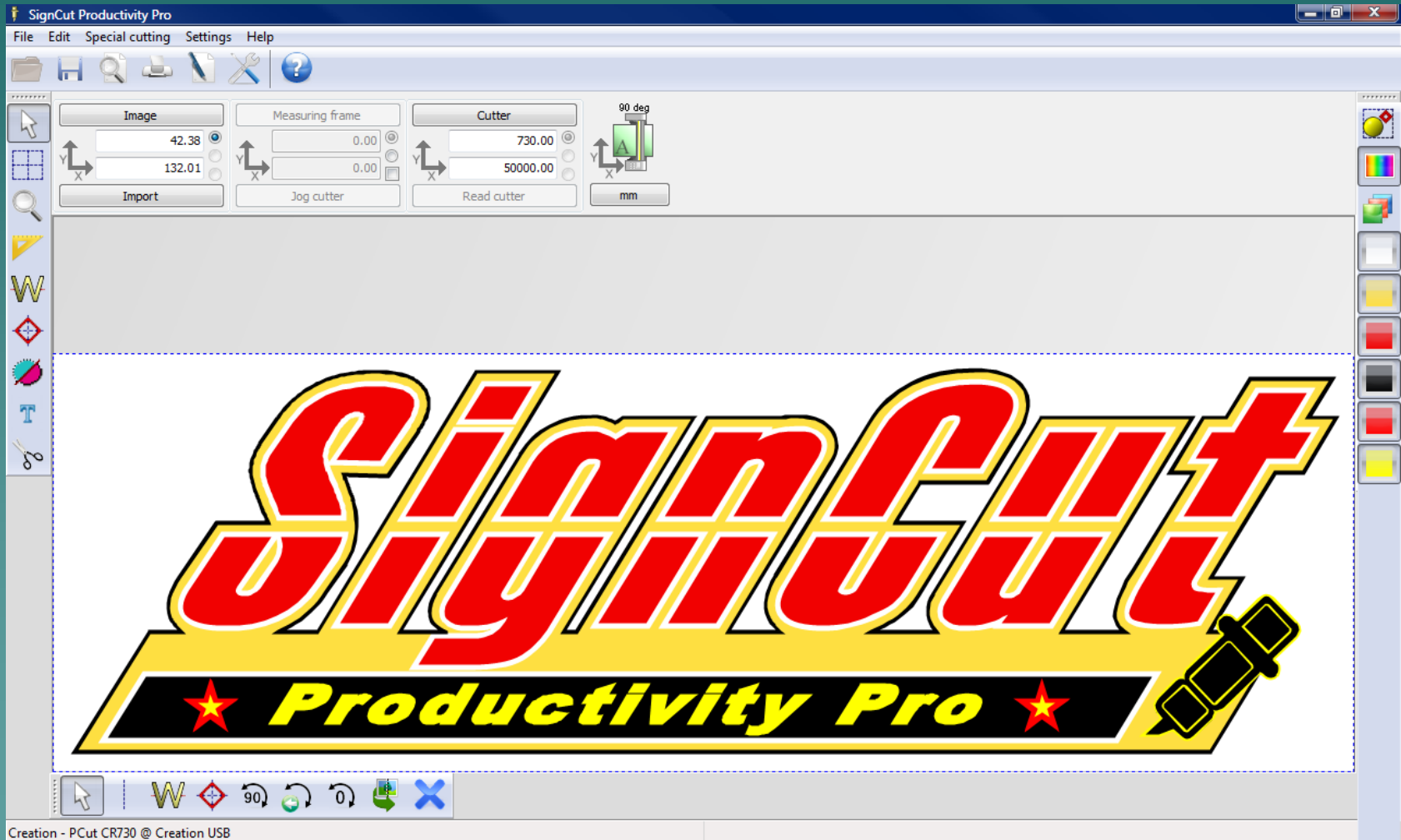
If you meet any kind of obstacles, then please read the FAQ.
<http://www.signcutpro.com/FAQ>

1-2: Registering and Installing

- ◆ Once registered, a screen pops up with a download link and the license number. For future reference, be sure to save this entire page and print it for reference.
 - If Signcut needs to be downloaded again in the future, this can be done by following this link:
 - ◆ <http://www.signcutpro.com/files/scpro.exe>
- ◆ This application requires the internet to run.
- ◆ **This installation will ask if you want to download and install Inkscape.** It is suggested that you do, as Signcut is only a cutting program, and Inkscape will allow you to design graphics.
- ◆ “pc” is a part of the license number. Be sure to include it when copying the license over to Signcut.
- ◆ CutterPros **does not** keep copies of license information.
- ◆ For a detailed description of Signcut features, refer to the Signcut help menu.

2-1: Basic Features & Layout

- ◆ When you first open Signcut, it will look like this:

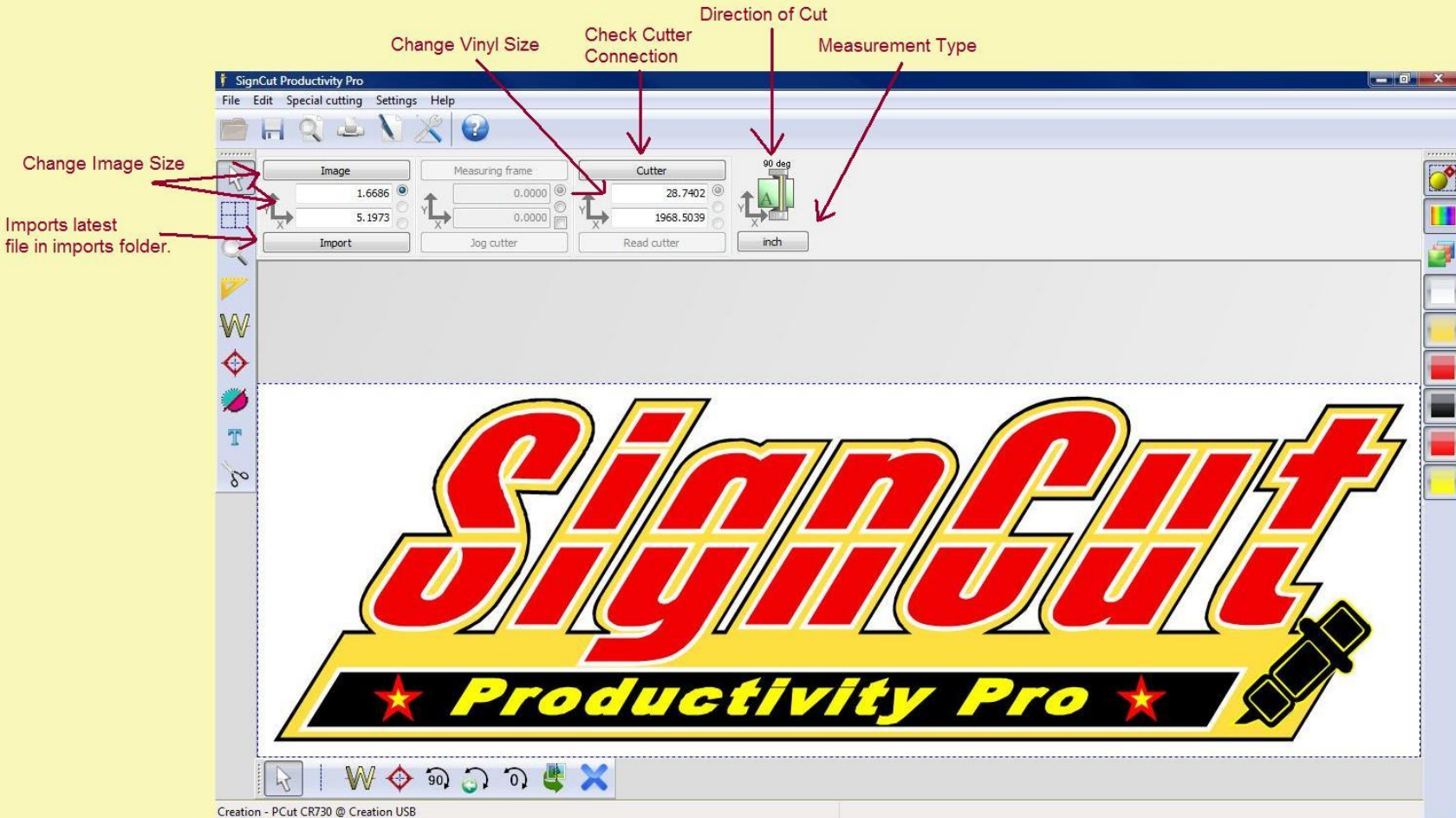


2-2: Basic Features & Layout

The screenshot displays the Sign Cut Productivity Pro software interface. The main workspace shows a large graphic of the 'Sign Cut Productivity Pro' logo. The interface is annotated with several toolbars and panels:

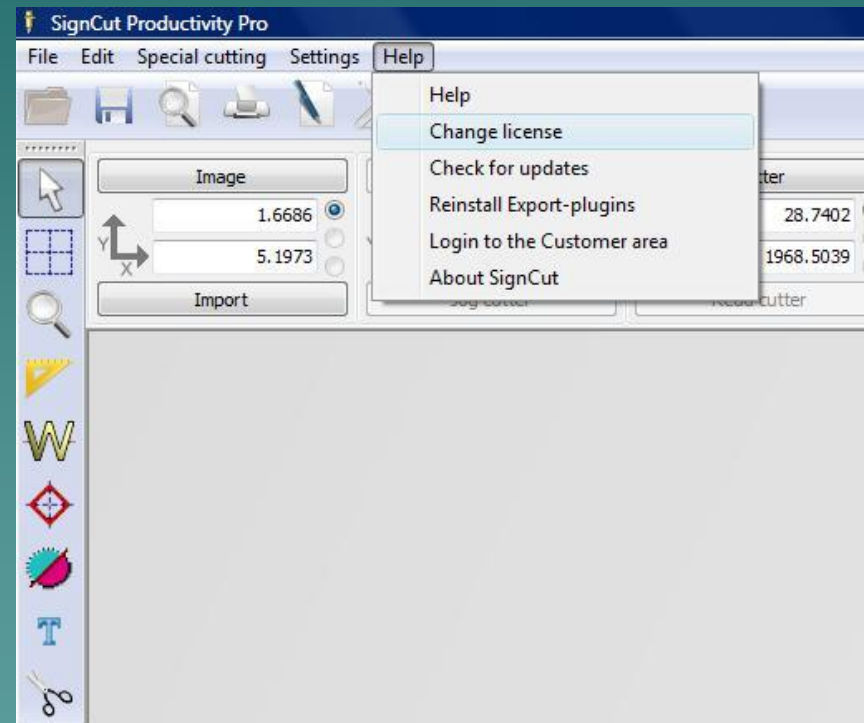
- Top Menu Bar:** File, Edit, Special Casing, Settings, Help. Annotations include: Print Job Information, Add Job Information, Preview, Save, Settings, and Help.
- Left Toolbar:** Open, Pointer, Tiling Tools, Zoom, Measuring Tools, Weeding Lines, Registration Marks (For Layering), Tools for Objects, Text Editor, Cut Out.
- Top Control Panels:** Image (1.6686, 5.1973), Measuring frame (0.0000, 0.0000), Cutter (28.7402, 1968.5039), Import, Jog cutter, Read cutter, 90 deg, inch.
- Right Panel:** Cut by Colour Tools (color selection palette).
- Secondary Toolbar (Bottom):** W (Weeding Lines), Registration Marks, 90° Rotation, Snapping, Rotation for Minimal Vinyl Consumption, Reset Rotation, Activate/Deactivate Tiles, Mirror Image.

2-3: Basic Features & Layout

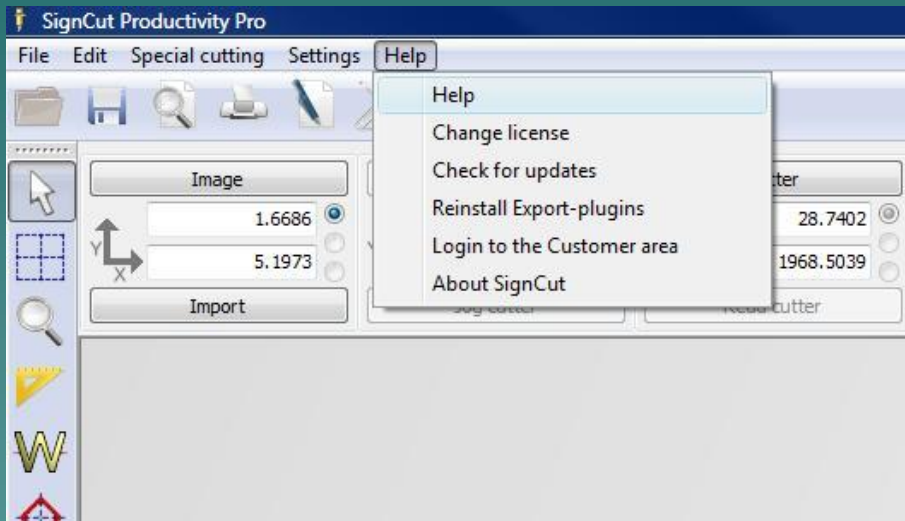


3-1: Finding License Key

- ◆ To find the Signcut license key, click on Help menu at the top of the page.
- ◆ If the key needs to be changed, click 'Change License'.
- ◆ If you are looking for the expiration date, click 'About Signcut'.



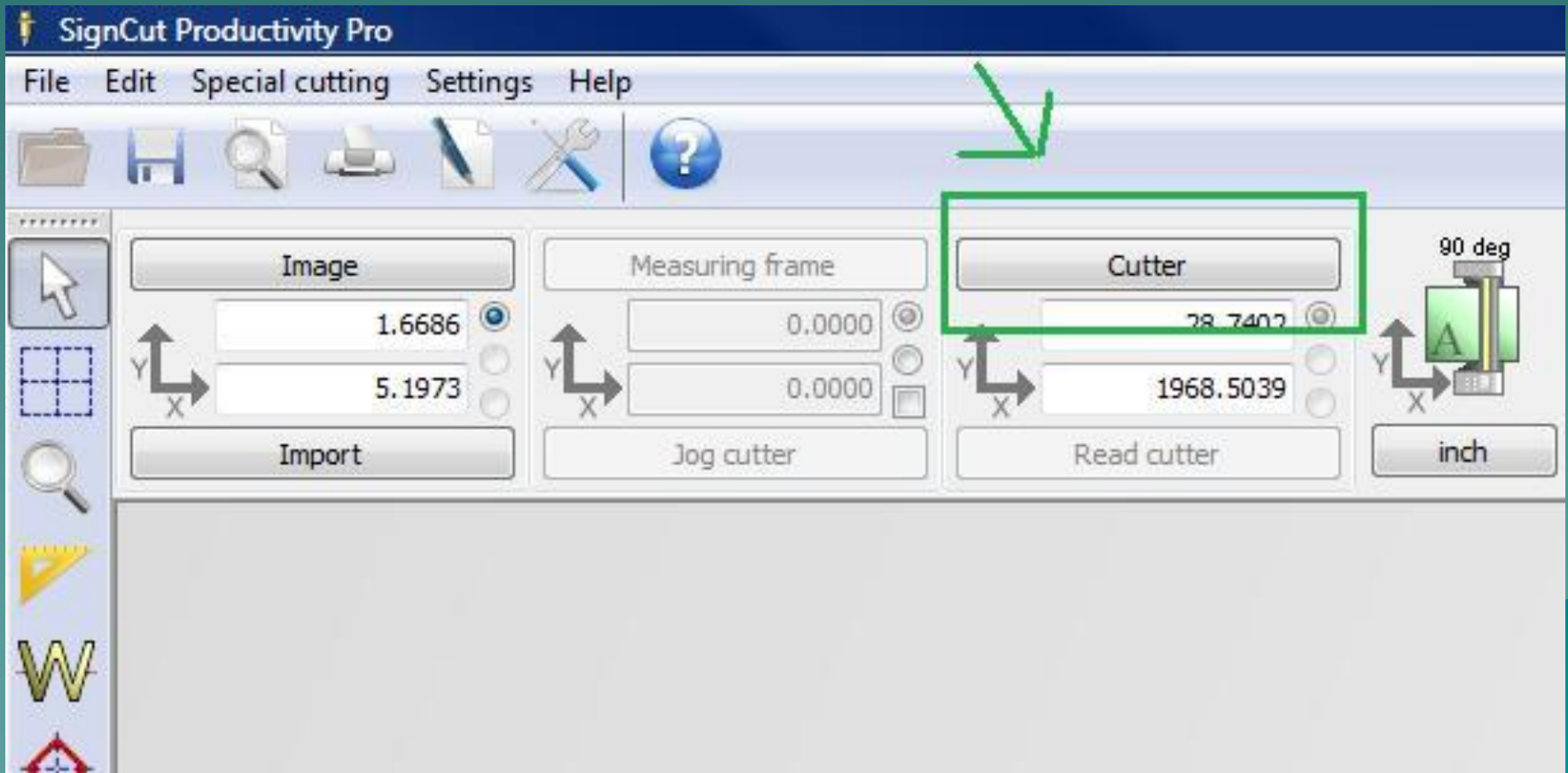
4-1: Finding Tutorials



- ◆ To find additional information on a particular feature in Signcut, click the Help menu and select 'Help'.

5-1: Cutter Setup

- ◆ To check the cutter setup information, click the 'Cutter' button.



5-2: Cutter Setup

- ◆ Below is the correct setup information for the Contour 2400. The Contour 4800 is SAGA-1350I, the Servo 2400 is SAGA-720II, the Servo 4800 is SAGA-1350II, and the Servo 6400 is SAGA-1750II.

Cutter

Manufacturer:
SAGA

Cutter:
SAGA-720I [Setup information about this cutter.](#)

Output Device / Port:
USB001

Use Windows serial setting

Baud: 38400 Parity: NON

Databits: 8 Stopbits: 1

Handshake: Hardware (RTS/CTS) Blade Offset: 0.0000

Use spooler:

Rotate: 90 deg

Advance after cut: 4.3307

Rewind after advance: 3.5433

Size abbreviation calibration: Calibrate cutter size

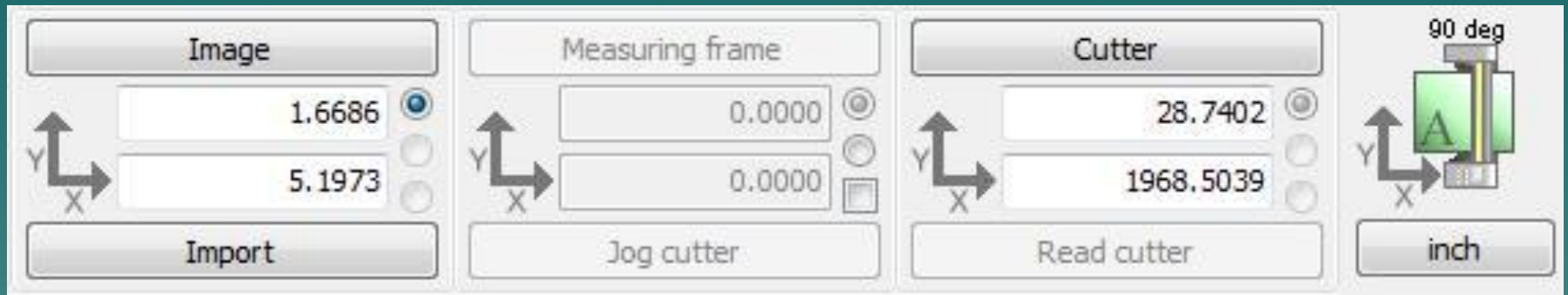
RTS CTS DTR DSR

Ok Help Cancel

5-3: Cutter Setup

- ◆ If for some reason, the cutter is not receiving information but SignCut is showing that it went through, verifying the cutter setup is vital.
- ◆ Be sure to check your cutter's Output Device/Port is correct. It should be listed as USB001, USB002, etc.
- ◆ Older versions of SignCut may show the output device as Contour 2400, Contour 4800, Servo 2400 or Servo 4800.

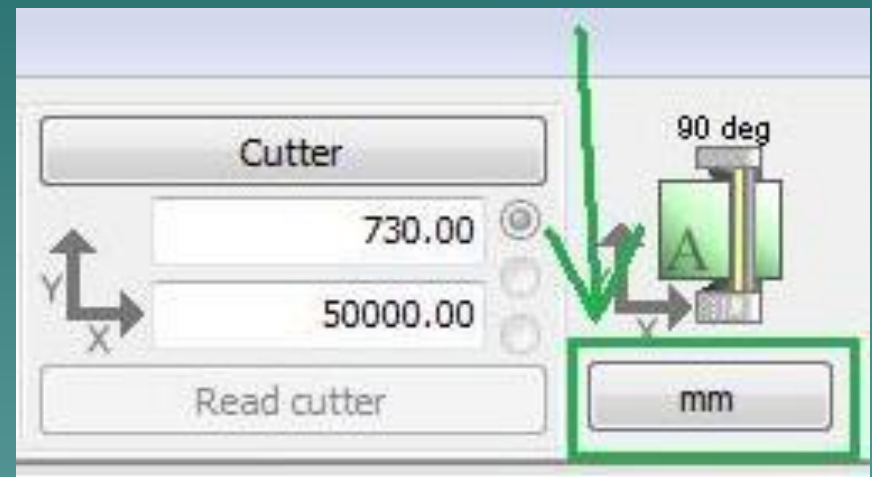
6-1: X/Y Layout



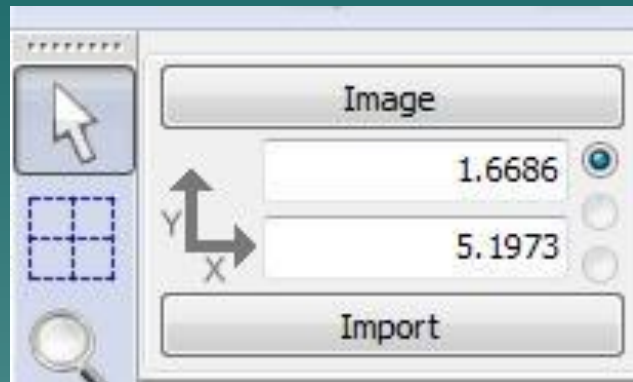
- ◆ The X/Y Axis is part of every measurement in the Signcut program.
- ◆ The images on the screen are based on this same system, with top to bottom being the Y axis, and left to right being the X-axis.
- ◆ As you can see on the right side of this image, the Y-axis is the width of the vinyl, and the X-axis is the length.
- ◆ Be sure to check your axes before cutting to ensure you are using the optimum amount of space on your vinyl.

7-1: Unit of Measurement

- ◆ Signcut's default unit of measurement is millimeters. To change this, just click on the unit of measurement button.



8-1: Image Size



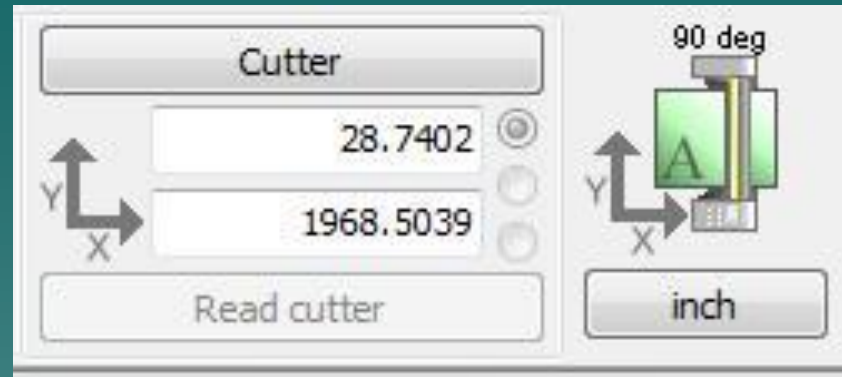
- ◆ To change the size of an image, simply change the numbers in the height or width text box, then click 'Enter' on your keyboard.

- ◆ Height is the top box, width is the bottom box.

- ◆ Click the 'Image' button to change both width and height by unchecking 'Proportional'.



9-1: Vinyl Size



- ◆ Adjusting the vinyl size is useful when cutting multiple copies of an image, or when tiling a very large image.
- ◆ The top box is the width of the vinyl, and the bottom is the length.
- ◆ It is recommended that when inputting the width of the vinyl, to subtract one half of an inch from the actual width to ensure the blade does not cut over the edge of the paper.
- ◆ To change these numbers, simply double click on the number you wish to change, type in your new number, and hit 'Enter' on your keyboard.

10-1: Layering Tools



- ◆ To add registration marks for layering multi-color images, click the red diamond tool on the bottom toolbar in Signcut.

10-2: Layering Tools



- ◆ Select the side you would like to layer from and click along the edge of the image. This will create triangles along the edge of the image.
- ◆ If you do not wish to place the registration marks along the edge, it will create red diamonds wherever you click.
- ◆ It is recommended that these marks are not added on top of the image or it will cut extra marks on the image itself.

10-3: Layering Tools

- ◆ Once the registration marks are added to the image, specific colors can be selected on the right side toolbar.
- ◆ Layering can be done with single color images also.
- ◆ Just create the registration marks and cut the full image on each color of vinyl you wish to use, then lay them together.

10-4: Layering Tools

- ◆ Every color on an image shows up on the right side bar.
- ◆ To view a particular color alone, click the color on the right side.
- ◆ To view multiple colors, click each color separately while holding down the CTRL key.



10-5: Layering Tools



10-6: Layering Tools



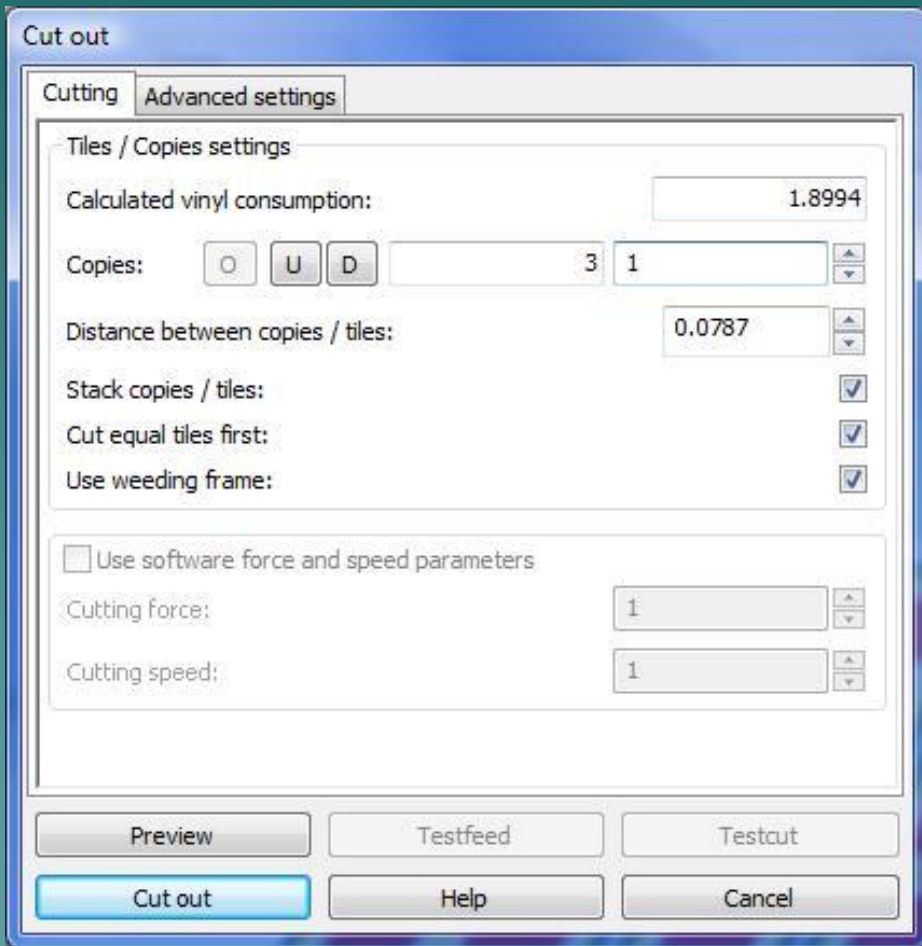
Sign Cut

11-1: Tiling

- ◆ Tiling is a feature provided for cutting images larger than the vinyl area.
- ◆ It separates an image into cut-able sections so the user is able to cut an image as large as they want.
- ◆ If a section has a red 'X' in it, it will not cut.



12-1: Cut Out Screen



- ◆ Copies – 1st Text Box
 - ◆ Shows how many copies of an image can be made in one row of vinyl along the width (Y-Axis).
- ◆ Copies – 2nd Text Box
 - ◆ Shows how many copies of an image are set to cut.
- ◆ Distance between copies
 - ◆ Amount of space between cuts. .0787" is wide enough to stick a pair of scissors through and not much more.
- ◆ Stack Copies/Tiles
 - ◆ Cuts as many tiles as it can on the same row of vinyl.
- ◆ Use Weeding Frame
 - ◆ Cuts a rectangular box out around the image.

The End

Please review our tutorials for more information on particular features.

<http://www.cutterpros.com/downloads> for further information.

To speak with a technician, submit a ticket at <http://www.cutterpros.com/support/> or call 888-828-8776 x227

CutterPros.com/Hahn Ventures LLC is NOT liable for any software/attachments/instructions/download links/content contained in this presentation. Use the contents of this presentation AT YOUR OWN RISK. CutterPros.com/Hahn Ventures LLC is NOT responsible for any damages incurred to your computer hardware/software or any possible viruses/Trojans/malware or any other type of damaging programs that may be contained in the links and/or attachments. It is your responsibility to verify the contents before using any of the information contained in this presentation. By using the contents in this email you agree to hold CutterPros.com/Hahn Ventures LLC harmless of all liability and damages. You agree that you are totally responsible for what you put on your computer, software you install on your computer and files you download to your computer.