

Go to the link below and navigate to the plugin for your version of Illustrator.
<http://www.signcutpro.com/SignCut-Productivity-Pro/signcut-export-plugins.html>

Home SignCut Downloads Purchase User Services Support

There's a subscription for everyone

Monthly/Yearly SignCut Draw New Life

Home

Live Help ONLINE

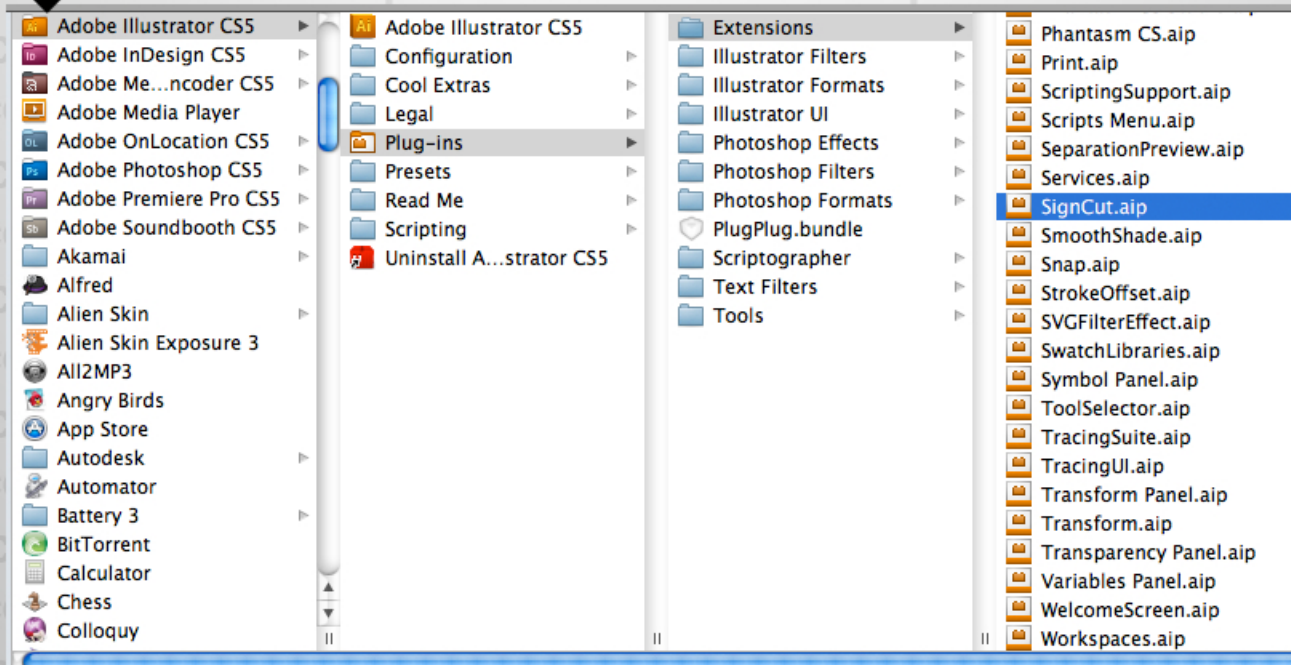
SignCut Export-plugins

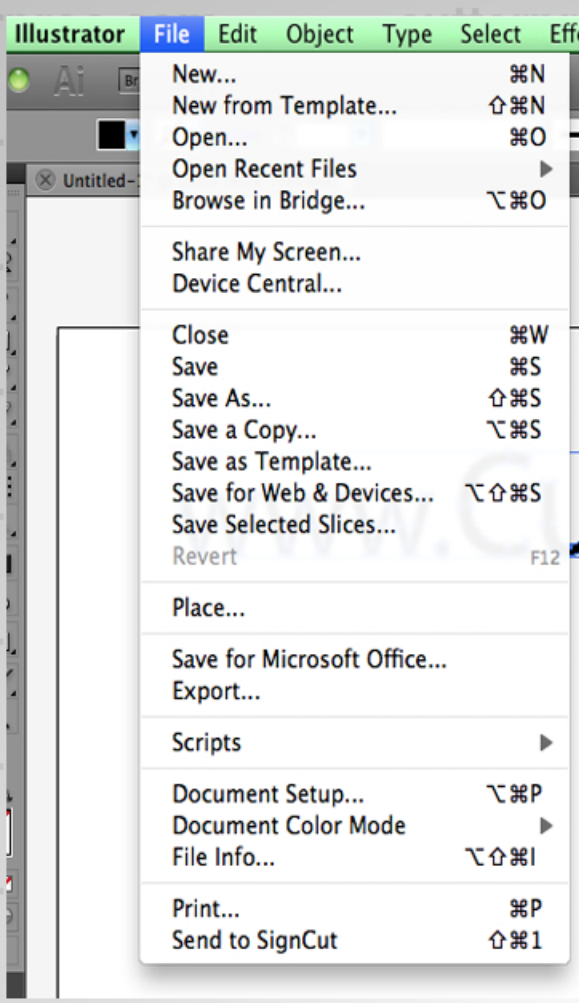
For Windows, the export-plugins are included in the regular installer and is installed automatically for Illustrator CS4 and older, however if you install SignCut first and then install a new layout-software such as CorelDraw, Illustrator or Inkscape, you will need to choose the "Reinstall export-plugins"-option in the Help-menu of SignCut. For newer versions of Adobe Illustrator, download the plugin listed below. For Adobe Illustrator CS5 on Windows, download the file listed below and place it in Plugins/Extensions in your Illustrator installation directory - and remember to remove any existing older versions of the SignCut plugin (sendtosigncut.aip).

For Mac, the export-plugins needs to be installed manually. Please use the following download links for your layout-software.

Illustrator CS2 / CS3 / CS4 for Mac OS X Tiger & Leopard (PPC & Intel): [Mac Illustrator Export Plugin](#)

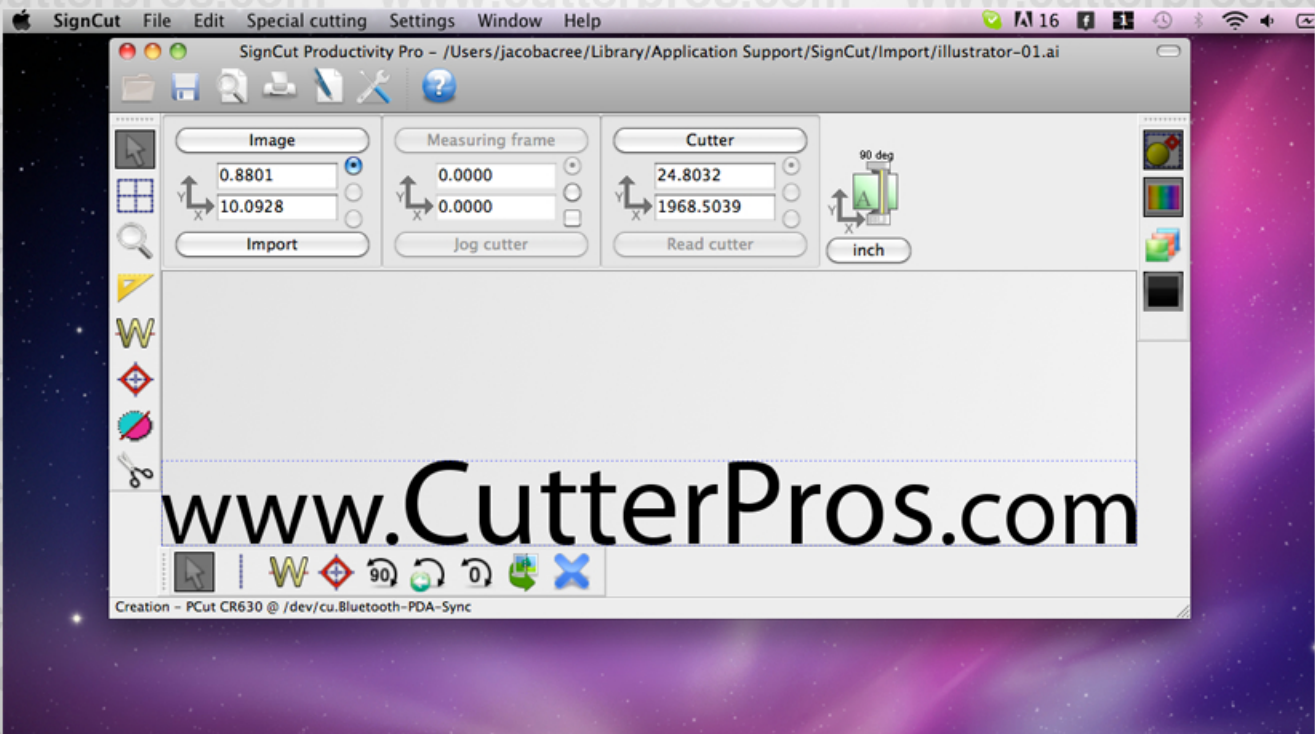
Once you have downloaded the plugin for your version of Illustrator, you need to place it in the "Extensions" folder for Illustrator. This can be found by navigating to the hard drive that your copy of Illustrator is installed on. Then go to Applications, then choose Adobe Illustrator, and open the "Extensions" folder that is located within the "Plug-Ins" folder, inside the Illustrator folder. The path should be similar to this: *Applications/Adobe Illustrator CS3/Plug-ins/Extensions*. See the image below for an example of this:





Once your art work is ready and all text is converted to outlines, you will go to File/Send to SignCut.

This will initiate our Sign Cut program, and import the artwork that you had on your artboard in Illustrator.



If you do not see your artwork after sending from Illustrator and your screen looks like this, click Import.

