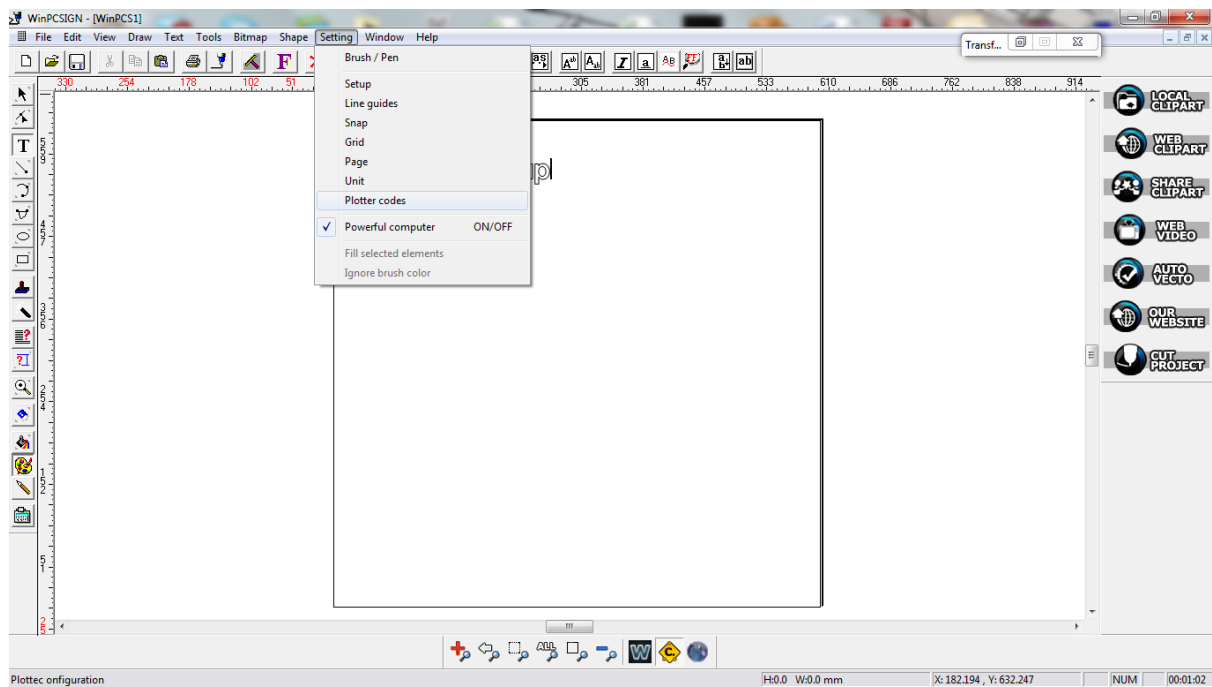
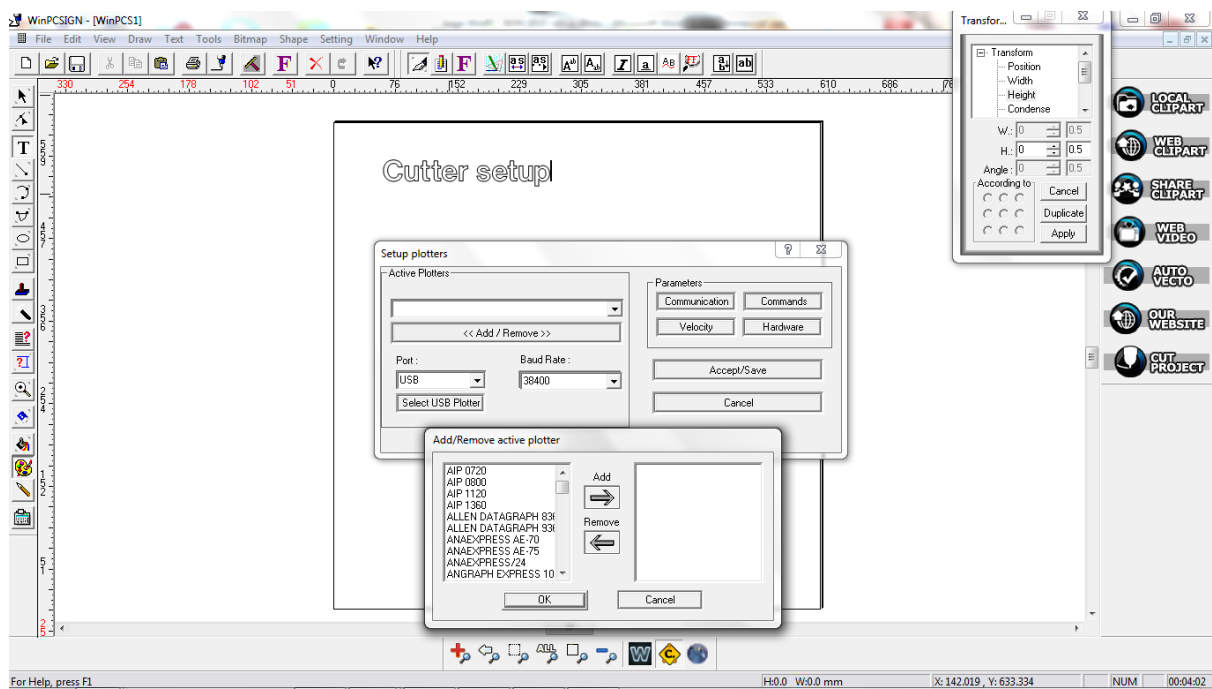


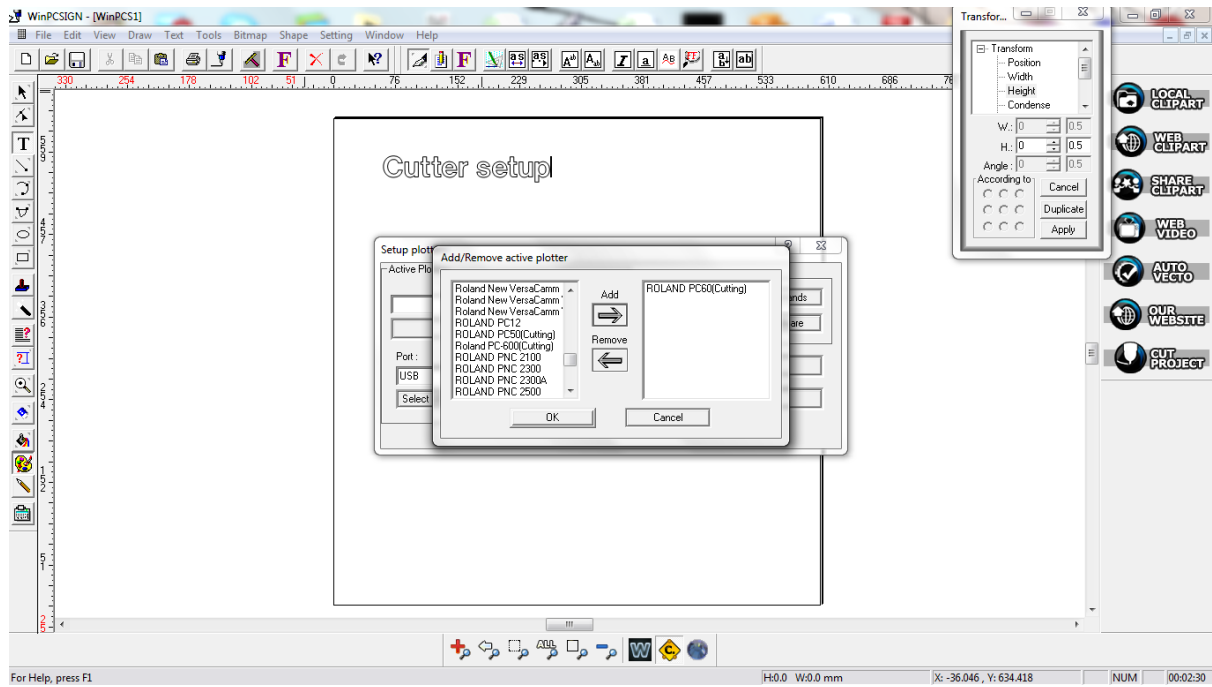
Select (Settings/Plotter codes)



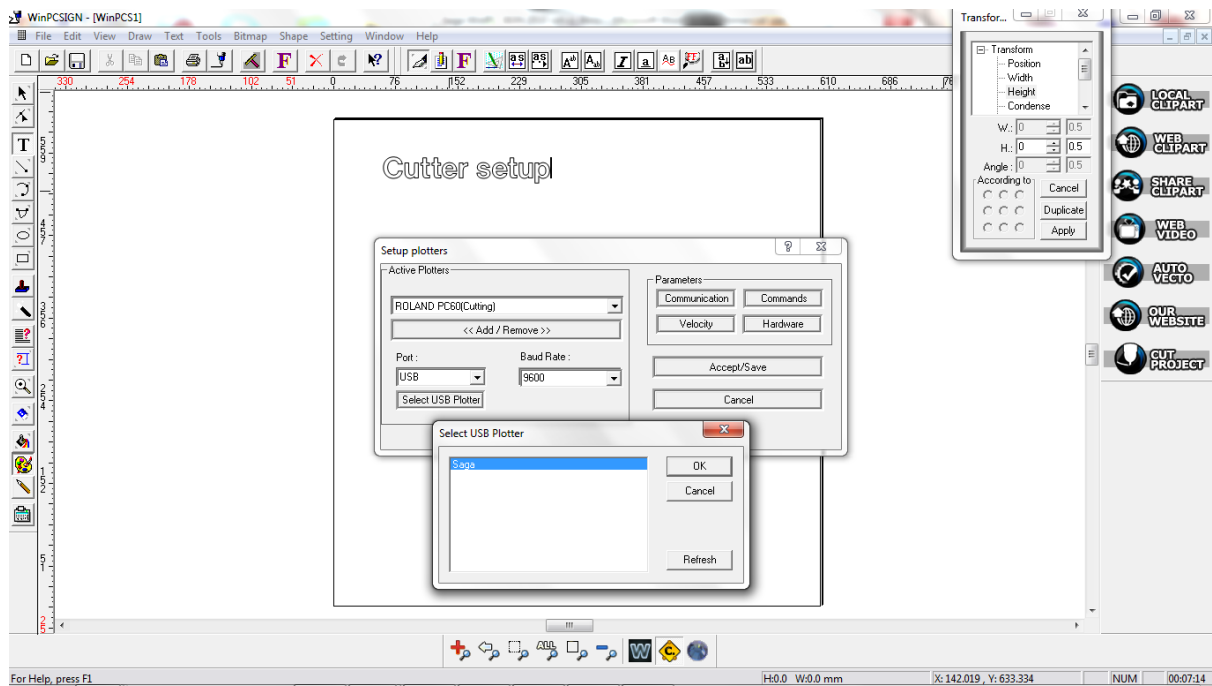
Select (Add / Remove)

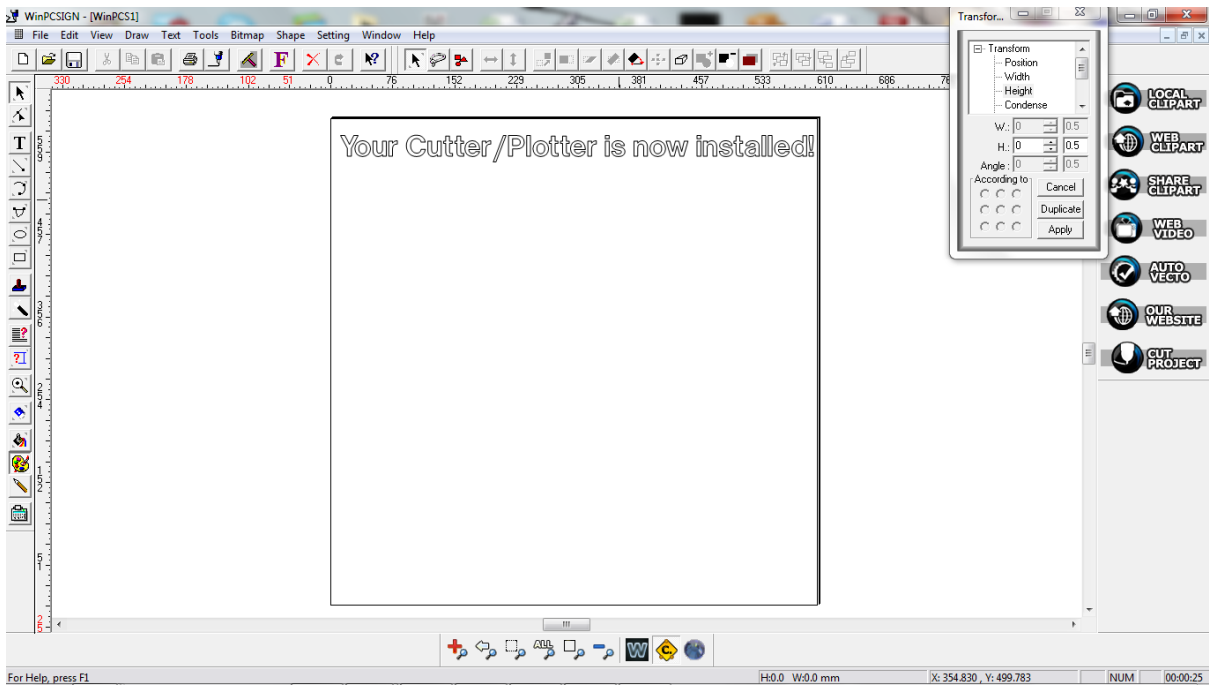


Select (ROLAND PC60 (Cutting) and click (Add) then (Ok) for Earlier versions of WinPC sign, or Saga-720IIP or Saga-1350IIP for WinPC SIGN 2012.



Select (Select USB Plotter) then select the (Saga printer) and click (Ok)





Select the Blue pen icon from the top toolbar to bring up the cutting panel; next change the Material width to match your substrate/Vinyl width and click on the design window to accept the new Material width configuration, select (Start) to begin cutting.

