

## Creation Illustrator plug-in install manual

1. Please make sure your computer have installed Adobe Illustrator CS3 or CS4 or CS5.
2. Open the installation programm “ Creation Illustrator Plug-in Setup.exe” of Creation Illustrator plug-in,as below:



3. Please select a language as below:



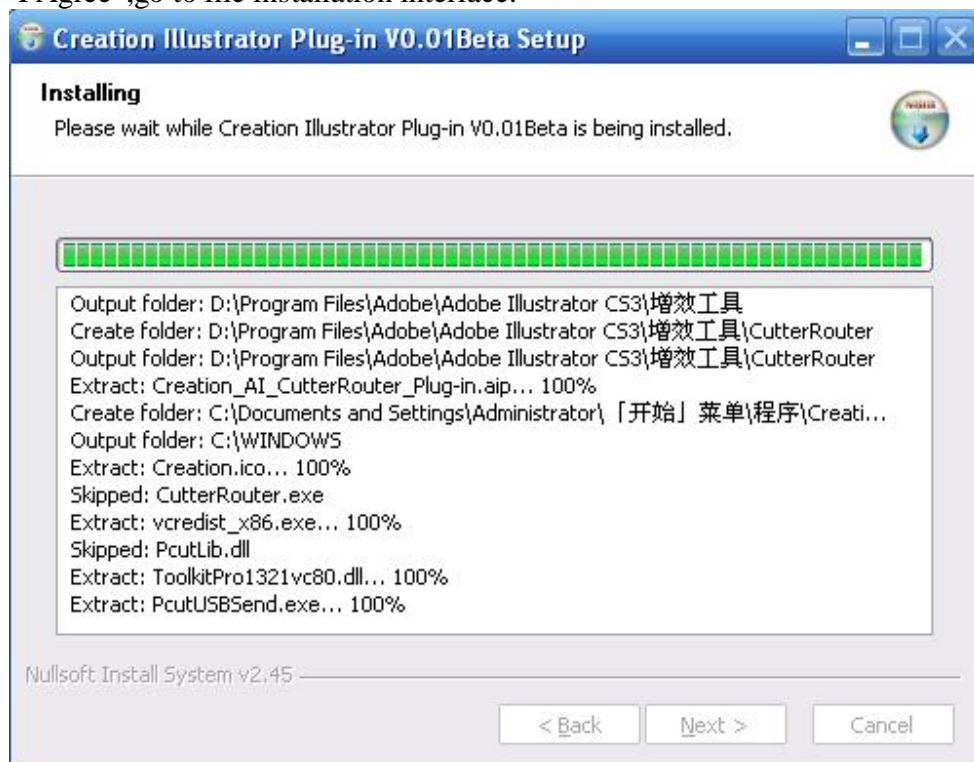
4. Click “Ok”,go to installation interface, then show existing plug-in version,as below:



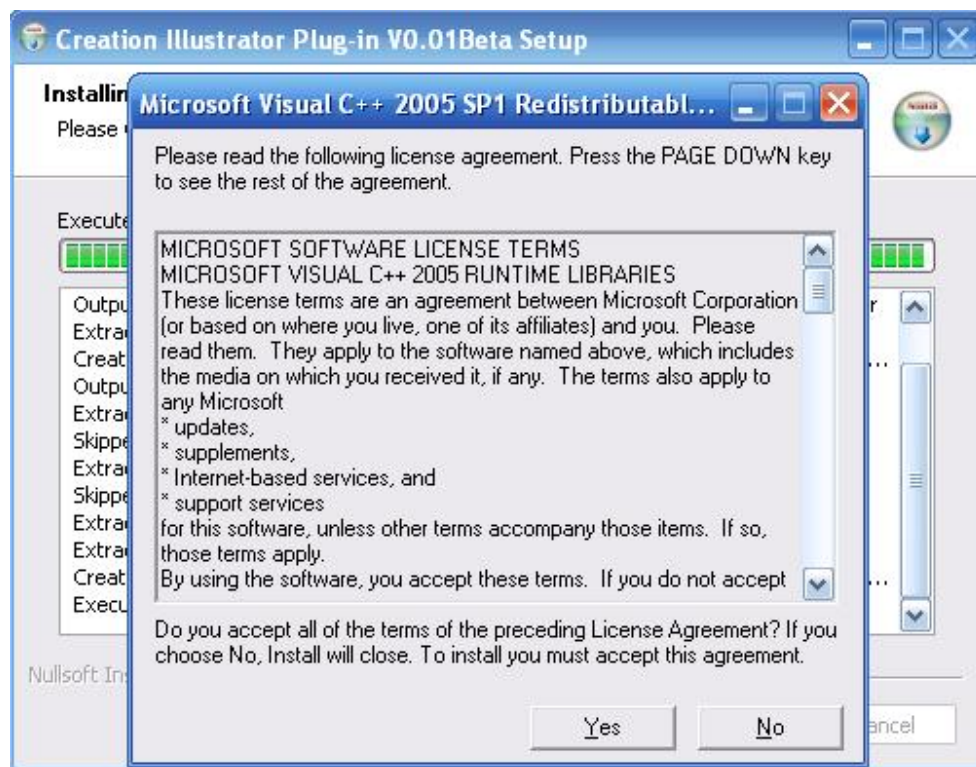
5. Click “next”,then check license agreement,include copyright and history version information.



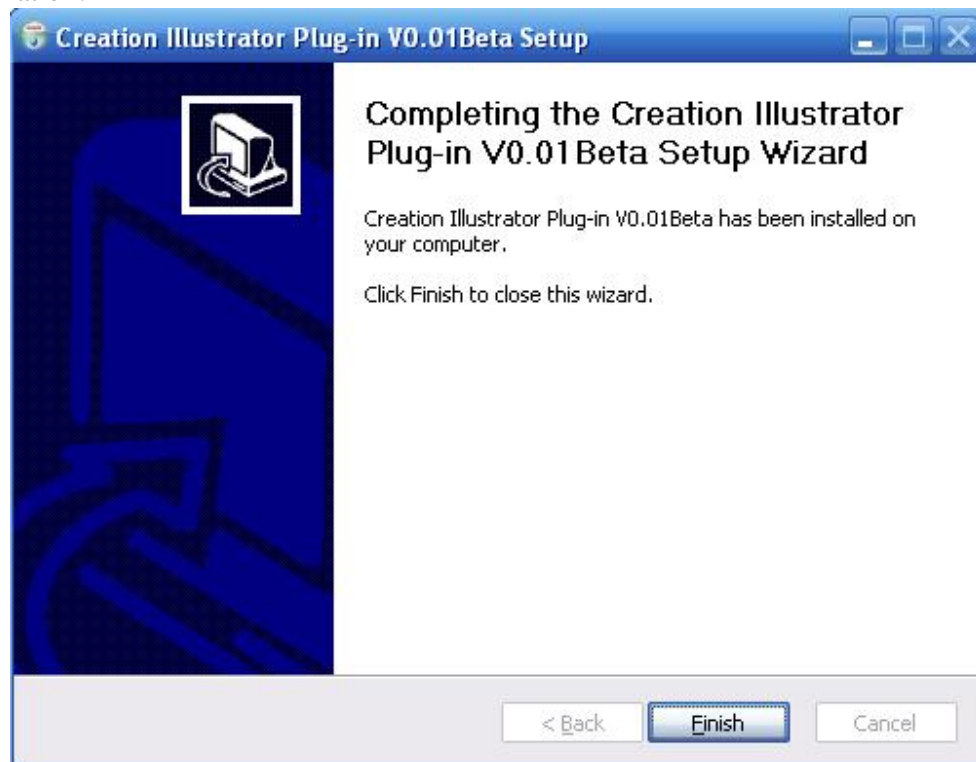
- 6 Click “I Agree”,go to file installation interface.



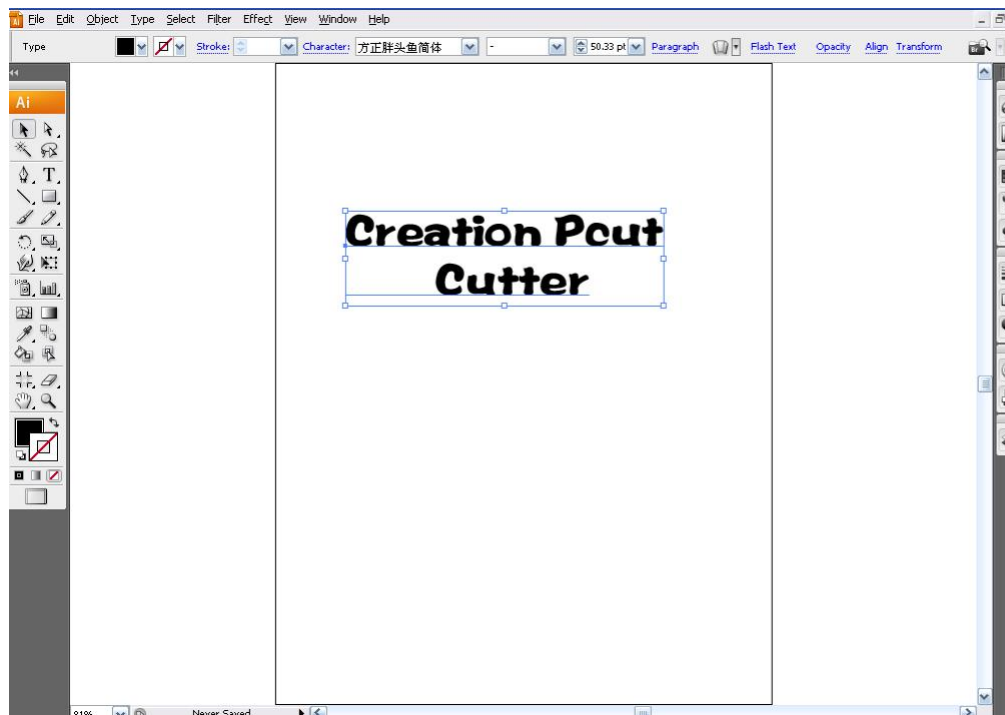
7. Install configuring packages,Select" Yes".



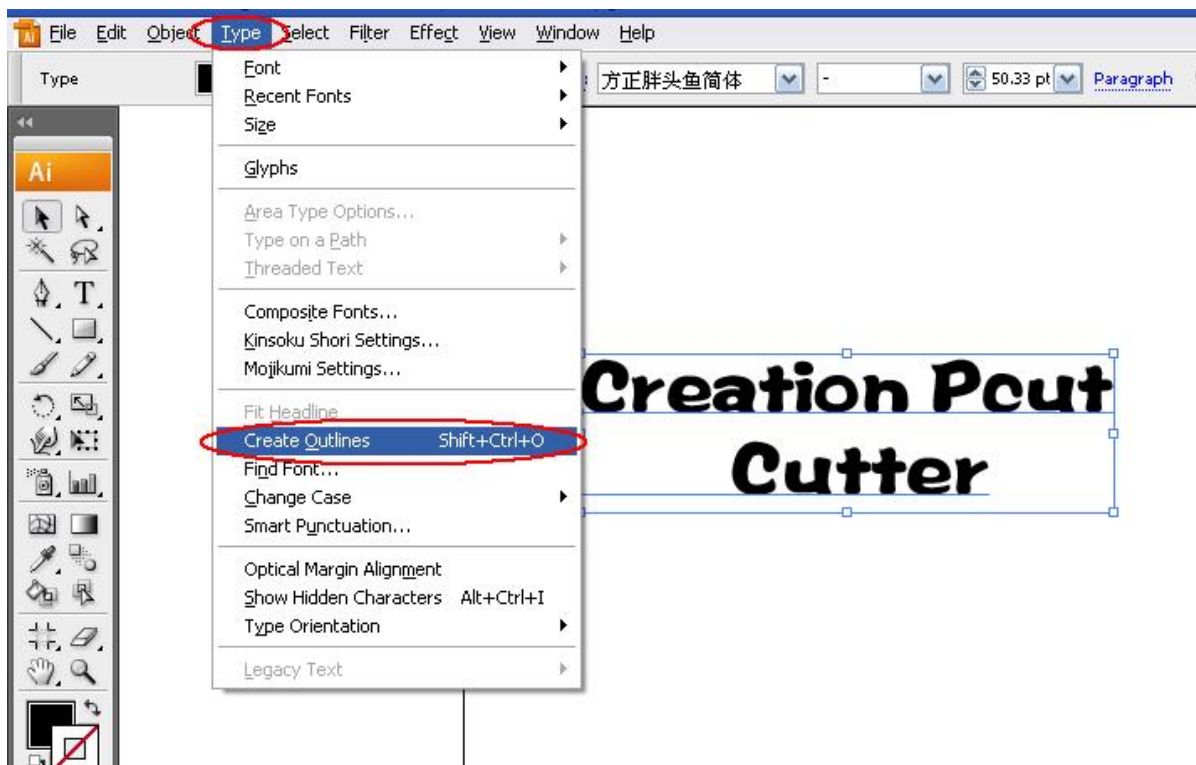
8. Finish Installation.



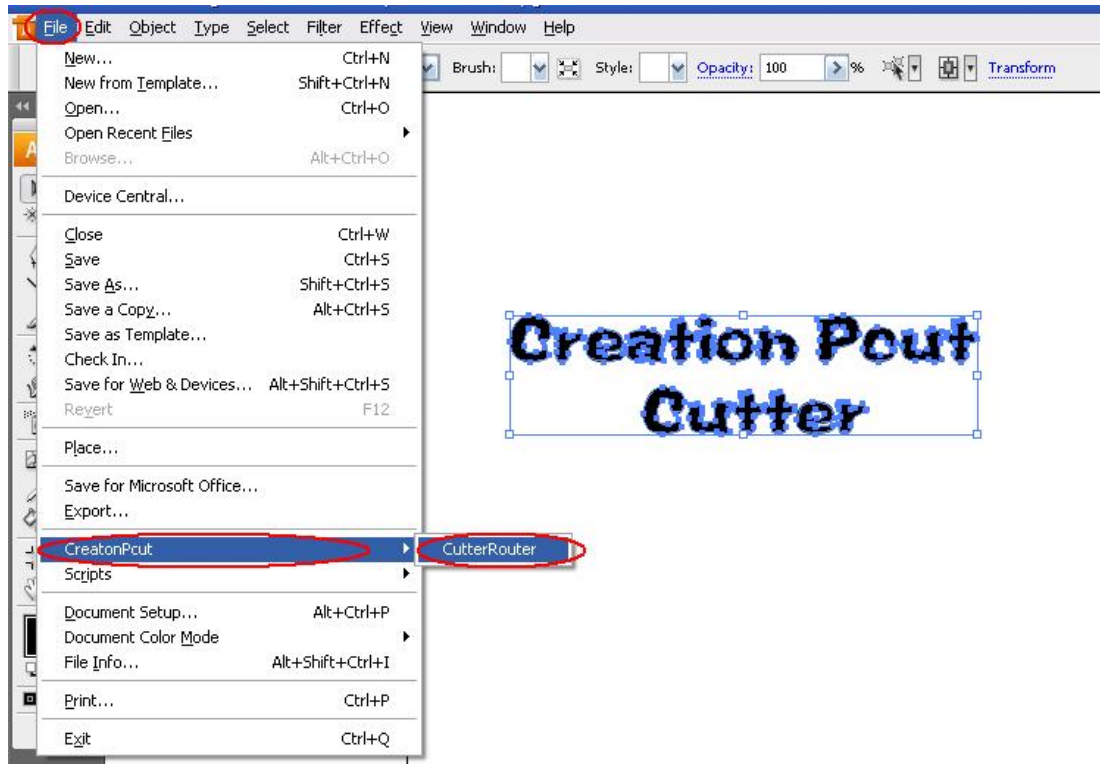
9. After finish installation, start Adobe Illustrator CS3, establish a new file and input letters (for example "Creation Pcut Cutter")



10. Please select "Create Outlines" from menu "type" to establish outline of the letter.



11. Select the file-CreationPcut-CutterRouter



12. Click“cut” to start CutterRouter(click”close”to cancel)





13. Start CutterRouter, and show the preview design.



14. Select the corresponding machine and port ,then click “Send” to output.